

À des fins de recherche uniquement

Anticorps Polyclonal de lapin anti-TET2



Numéro de catalogue: 21207-1-AP

Phare

49 Publications

Informations de base

Numéro de catalogue:

21207-1-AP

Taille:

150ul, Concentration: 800 µg/ml by Nanodrop;

Hôte:

Lapin

Isotype:

IgG

Immunogen Catalog Number:

AG15583

Numéro d'acquisition GenBank:

BC150180

Identification du gène (NCBI):

54790

Nom complet:

tet oncogene family member 2

MW calculé

2002 aa, 224 kDa

MW observés:

130 kDa, 250 kDa

Méthode de purification:

Purification par affinité contre l'antigène

Dilutions recommandées:

WB 1:500-1:2000

IP 0.5-4.0 ug for IP and 1:500-1:1000 for WB

IHC 1:250-1:1000

IF 1:50-1:500

Applications

Applications testées:

FC, IF, IHC, IP, WB, ELISA

Demandes citées:

ChIP, CoIP, IF, IHC, WB

Spécificité de l'espèce:

Humain, souris

Espèces citées:

Chèvre, Humain, souris

Contrôles positifs:

WB : cellules A431, cellules HEK-293, cellules HeLa, cellules HepG2, cellules HL-60, cellules K-562

IP : tissu cérébral de souris,

IHC : tissu de cancer du côlon humain,

IF : cellules Neuro-2a,

Remarque-IHC: il est suggéré de démasquer l'antigène avec un tampon de TE buffer pH 9,0; (*) À défaut, le démasquage de l'antigène peut être effectué avec un tampon citrate pH 6,0.

Informations générales

TET2 is an enzyme which converts 5-methylcytosine (5-mC) to 5-hydroxymethylcytosine (5-hmC) in DNA and is important for normal myelopoiesis. TET2 mutations are frequently observed in myeloid malignancies, including myeloproliferative neoplasms. TET2 is broadly expressed in a variety of tissues. In healthy tissues, TET2 expression was shown to be elevated in hematopoietic cells with highest expression in granulocytes. Three isoforms of TET2 exists due to the alternative splicing. 220-250 kDa bands represent the full-length isoform; 130-133 kDa bands represent the nuclear isoforms of TET2. (PMID: 24615693) This antibody recognizes all three isoforms of TET2.

Publications notables

Autrice	Pubmed ID	Journal	Application
Shanshan Li	33014158	Oncol Lett	WB
Wei Zhong	30456333	JACC Basic Transl Sci	WB
Xiang Sun	31515281	J Exp Med	WB

Stockage

Stockage:

Stocker à -20°C. Stable pendant un an après l'expédition.

Tampon de stockage:

PBS avec azoture de sodium à 0,02 % et glycérol à 50 % pH 7,3

L'aliquotage n'est pas nécessaire pour le stockage à -20C

*** Les 20ul contiennent 0,1% de BSA.

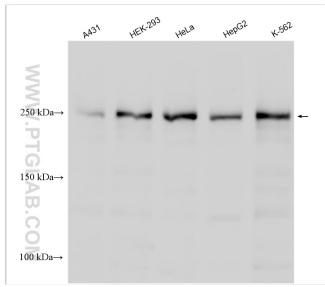
For technical support and original validation data for this product please contact:

T: 1 (888) 4PTGLAB (1-888-478-4522) (toll free in USA), or 1(312) 455-8498 (outside USA)

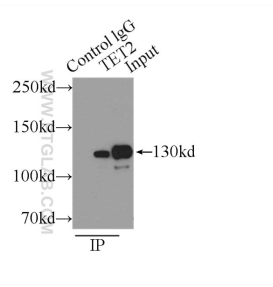
E: proteintech@ptglab.com
W: ptglab.com

This product is exclusively available under Proteintech Group brand and is not available to purchase from any other manufacturer.

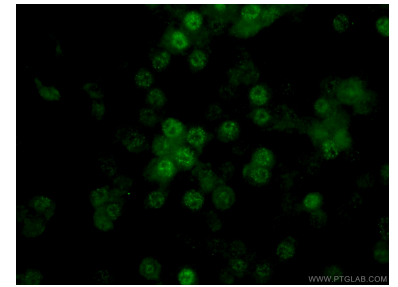
Données de validation sélectionnées



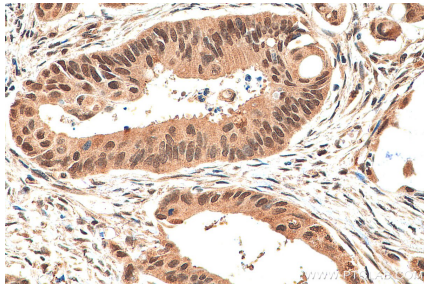
Various lysates were subjected to SDS PAGE followed by western blot with 21207-1-AP (TET2 antibody) at dilution of 1:1000 incubated at room temperature for 1.5 hours.



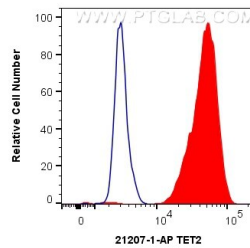
IP Result of anti-TET2 (IP:21207-1-AP, 3ug; Detection:21207-1-AP 1:500) with mouse brain tissue lysate 4000ug.



Immunofluorescent analysis of (4% PFA) fixed Neuro-2a cells using 21207-1-AP (TET2 antibody) at dilution of 1:50 and Alexa Fluor 488-Conjugated AffiniPure Goat Anti-Rabbit IgG(H+L).



Immunohistochemical analysis of paraffin-embedded human colon cancer tissue slide using 21207-1-AP (TET2 antibody) at dilution of 1:500 (under 40x lens). Heat mediated antigen retrieval with Tris-EDTA buffer (pH 9.0).



1×10^6 HeLa cells were intracellularly stained with 0.4 ug Anti-Human TET2 (21207-1-AP) and CoraLite®488-Conjugated AffiniPure Goat Anti-Rabbit IgG(H+L) at dilution 1:1000 (red), or 0.4 ug Control Antibody. Cells were fixed and permeabilized with Transcription Factor Staining Buffer Kit (PF00011).