

À des fins de recherche uniquement

Anticorps Polyclonal de lapin anti- PLOD2-Specific



Numéro de catalogue: 21214-1-AP

Phare

45 Publications

Informations de base

Numéro de catalogue:

21214-1-AP

Taille:

150ul, Concentration: 500 µg/ml by Nanodrop;

Hôte:

Lapin

Isotype:

IgG

Immunogen Catalog Number:

AG15614

Numéro d'acquisition GenBank:

BC037169

Identification du gène (NCBI):

5352

Nom complet:

procollagen-lysine, 2-oxoglutarate 5-dioxygenase 2

MW calculé

758 aa, 85 kDa

MW observés:

87 kDa

Méthode de purification:

Purification par affinité contre l'antigène

Dilutions recommandées:

WB 1:500-1:3000

IP 0.5-4.0 µg for IP and 1:500-1:1000 for WB

IHC 1:50-1:500

IF 1:50-1:500

Applications

Applications testées:

FC, IF, IHC, IP, WB, ELISA

Demandes citées:

IF, IHC, WB

Spécificité de l'espèce:

Humain, rat, souris

Espèces citées:

Humain, poisson-zèbre, souris

Remarque-IHC: il est suggéré de démasquer l'antigène avec un tampon de TE buffer pH 9,0; (*) À défaut, 'le démasquage de l'antigène peut être effectué avec un tampon citrate pH 6,0.

Contrôles positifs:

WB : cellules Caco-2, cellules A431, cellules DU 145, cellules HEK-293, cellules HeLa, cellules HepG2, cellules HT-1080, tissu hépatique de souris, tissu pancréatique de souris, tissu testiculaire de souris

IP : tissu testiculaire de souris,

IHC : tissu de cancer du foie humain, tissu de muscle squelettique humain, tissu pancréatique humain

IF : cellules HeLa,

Informations générales

PLOD2, also named as LH2, forms hydroxylysine residues in -Xaa-Lys-Gly- sequences in collagens. It is a potential novel prognostic factor for HCC patients following surgery. Among the PLOD genes, PLOD2 contributes to cancer prognosis and angiogenesis. Several authors have reported that PLOD2 expression might provide prognostic information about malignant tumours such as glioblastoma. PLOD2 expression is a useful biomarker for the effects of antiangiogenic treatment for malignancy. (PMID:22098155). It has 2 isoforms produced by alternative splicing and seven glycosylation sites. This antibody is specific to PLOD2.

Publications notables

Autrice	Pubmed ID	Journal	Application
Tomoaki Saito	34718219	Bone	WB, IHC
Ryunosuke Nozaki	34875533	Biochem Biophys Res Commun	WB
Bernd Stratmann	27898103	Sci Rep	WB

Stockage

Stockage:

Stocker à -20°C. Stable pendant un an après l'expédition.

Tampon de stockage:

PBS avec azoture de sodium à 0,02 % et glycérol à 50 % pH 7,3

L'aliquotage n'est pas nécessaire pour le stockage à -20C

*** Les 20ul contiennent 0,1% de BSA.

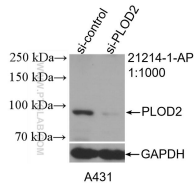
For technical support and original validation data for this product please contact:

T: 1 (888) 4PTGLAB (1-888-478-4522) (toll free in USA), or 1(312) 455-8498 (outside USA)

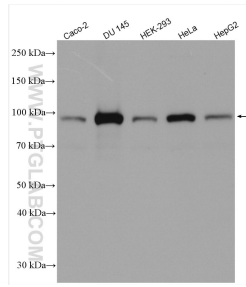
E: proteintech@ptglab.com
W: ptglab.com

This product is exclusively available under Proteintech Group brand and is not available to purchase from any other manufacturer.

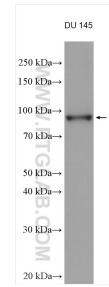
Données de validation sélectionnées



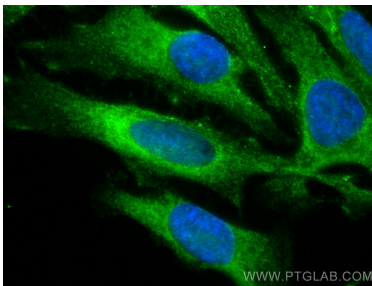
WB result of PLOD2-Specific antibody (21214-1-AP; 1:1000; incubated at room temperature for 1.5 hours) with sh-Control and sh-PLOD2-Specific transfected A431 cells.



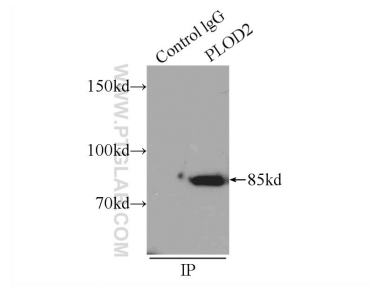
Various lysates were subjected to SDS PAGE followed by western blot with 21214-1-AP (PLOD2-Specific antibody) at dilution of 1:1500 incubated at room temperature for 1.5 hours.



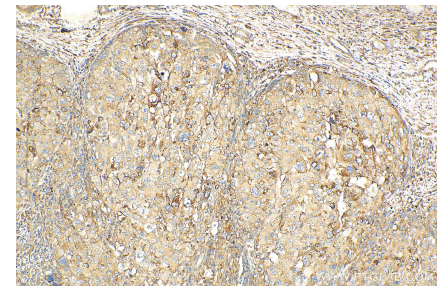
DU 145 cells lysates were subjected to SDS PAGE followed by western blot with 21214-1-AP (PLOD2-Specific antibody) at dilution of 1:1500 incubated at room temperature for 1.5 hours.



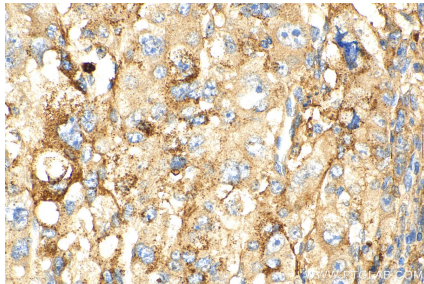
Immunofluorescent analysis of (-20°C Methanol) fixed HeLa cells using PLOD2-Specific antibody (21214-1-AP) at dilution of 1:200 and CoraLite®488-Conjugated AffiniPure Goat Anti-Rabbit IgG(H+L).



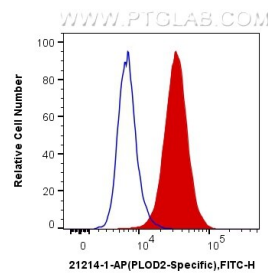
IP Result of anti-PLOD2-Specific (IP:21214-1-AP, 4ug; Detection:21214-1-AP 1:500) with mouse testis tissue lysate 5000ug.



Immunohistochemical analysis of paraffin-embedded human liver cancer tissue slide using 21214-1-AP (PLOD2-Specific antibody) at dilution of 1:200 (under 10x lens). Heat mediated antigen retrieval with Tris-EDTA buffer (pH 9.0).



Immunohistochemical analysis of paraffin-embedded human liver cancer tissue slide using 21214-1-AP (PLOD2-Specific antibody) at dilution of 1:200 (under 40x lens). Heat mediated antigen retrieval with Tris-EDTA buffer (pH 9.0).



1X10⁶ HeLa cells were intracellularly stained with 0.4 ug Anti-Human PLOD2-Specific (21214-1-AP) and CoraLite®488-Conjugated AffiniPure Goat Anti-Rabbit IgG(H+L) at dilution 1:1000 (red), or 0.4 ug x. Cells were fixed with 4% PFA and permeabilized with Flow Cytometry Perm Buffer (PF00011-C).