

À des fins de recherche uniquement

Anticorps Polyclonal de lapin anti- ATOH1



Numéro de catalogue: 21215-1-AP

29 Publications

Informations de base

Numéro de catalogue:

21215-1-AP

Taille:

150ul, Concentration: 400 µg/ml by Nanodrop and 227 µg/ml by Bradford method using BSA as the standard;

Hôte:

Lapin

Isotype:

IgG

Immunogen Catalog Number:

AG15615

Numéro d'acquisition GenBank:

BC069594

Identification du gène (NCBI):

474

Nom complet:

atonal homolog 1 (Drosophila)

MW calculé

354 aa, 38 kDa

MW observés:

38-40 kDa

Méthode de purification:

Purification par affinité contre l'antigène

Dilutions recommandées:

WB 1:5000-1:50000

IF 1:50-1:500

Applications

Applications testées:

IF, WB, ELISA

Demandes citées:

ChIP, IF, IHC, WB

Spécificité de l'espèce:

Humain, rat, souris

Espèces citées:

Humain, singe, souris

Contrôles positifs:

WB : cellules Neuro-2a, cellules HepG2, tissu cérébral de rat, tissu cérébral de souris, tissu d'intestin grêle de souris

IF : tissu cérébral de souris, cellules HepG2

Informations générales

ATOH1, also named as Protein atonal homolog 1 or BHLHA14, is a 364 amino acid protein, which contains 1 bHLH (basic helix-loop-helix) domain. ATOH1, as a transcriptional regulator in the nucleus activates E box-dependent transcription in collaboration with TCF3/E47, but the activity is completely antagonized by the negative regulator of neurogenesis HES1. ATOH1 plays a role in the differentiation of subsets of neural cells by activating E box-dependent transcription.

Publications notables

| Autrice | Pubmed ID | Journal | Application |
|--------------|-----------|----------------------------|-------------|
| Haoran Zhang | 36147660 | Comput Struct Biotechnol J | WB |
| Tianli Qin | 36252002 | Proc Natl Acad Sci U S A | IF |
| Levi Todd | 34686336 | Cell Rep | IF |

Stockage

Stockage:

Stocker à -20°C. Stable pendant un an après l'expédition.

Tampon de stockage:

PBS avec azoture de sodium à 0,02 % et glycérol à 50 % pH 7,3

L'aliquotage n'est pas nécessaire pour le stockage à -20C

*** Les 20ul contiennent 0,1% de BSA.

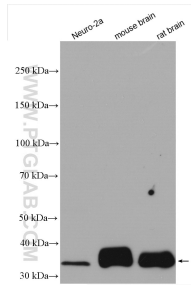
For technical support and original validation data for this product please contact:

T: 1 (888) 4PTGLAB (1-888-478-4522) (toll free in USA), or 1(312) 455-8498 (outside USA)

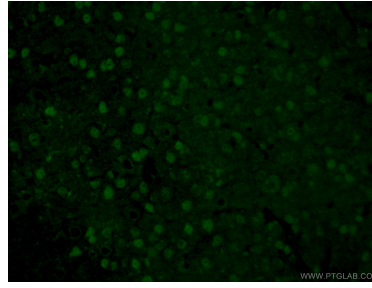
E: proteintech@ptglab.com
W: ptglab.com

This product is exclusively available under Proteintech Group brand and is not available to purchase from any other manufacturer.

Données de validation sélectionnées



Various lysates were subjected to SDS PAGE followed by western blot with 21215-1-AP (ATOH1 antibody) at dilution of 1:10000 incubated at room temperature for 1.5 hours.



Immunofluorescent analysis of (4% PFA) fixed mouse brain tissue using 21215-1-AP (ATOH1 antibody) at dilution of 1:50 and Alexa Fluor 488-conjugated AffiniPure Goat Anti-Rabbit IgG(H+L).