

À des fins de recherche uniquement

Anticorps Polyclonal de lapin anti-Catalase



Numéro de catalogue: 21260-1-AP

116 Publications

Informations de base

Numéro de catalogue:

21260-1-AP

Taille:

150ul, Concentration: 350 µg/ml by Nanodrop and 233 µg/ml by Bradford method using BSA as the standard;

Hôte:

Lapin

Isotype:

IgG

Immunogen Catalog Number:

AG15383

Numéro d'acquisition GenBank:

BC112219

Identification du gène (NCBI):

847

Nom complet:

catalase

MW calculé

60 kDa

MW observés:

60 kDa

Méthode de purification:

Purification par affinité contre l'antigène

Dilutions recommandées:

WB 1:2000-1:16000

IHC 1:250-1:1000

IF 1:10-1:100

Applications

Applications testées:

IF, IHC, WB, ELISA

Demandes citées:

FC, IF, IHC, WB

Spécificité de l'espèce:

Humain, rat, souris

Espèces citées:

bovin, Chèvre, Humain, porc, rat, souris, Meretrix meretrix, Champignon, Chauve-souris

Remarque-IHC: il est suggéré de démasquer l'antigène avec un tampon de TE buffer pH 9,0; (*) À défaut, 'le démasquage de l'antigène peut être effectué avec un tampon citrate pH 6,0.

Contrôles positifs:

WB : cellules HeLa, cellules HepG2, cellules Jurkat, cellules LO2, cellules Raji, tissu hépatique de rat, tissu hépatique de souris

IHC : tissu de cancer du foie humain, tissu de cirrhose hépatique humaine

IF : cellules HepG2, cellules HeLa

Informations générales

Catalase belongs to the catalase family. CAT occurs in almost all aerobically respiring organisms and serves to protect cells from the toxic effects of hydrogen peroxide. CAT promotes growth of cells including T-cells, B-cells, myeloid leukemia cells, melanoma cells, mastocytoma cells and normal and transformed fibroblast cells. CAT catalyzes the reaction: $2 \text{H}_2\text{O}_2 = \text{O}_2 + 2 \text{H}_2\text{O}$. Defects in CAT are the cause of acatalasia (ACATLAS) which is also known as acatalasemia.

Publications notables

Autrice	Pubmed ID	Journal	Application
Wei Cai	36170234	Autophagy	IF
Lin-Yu Jin	36164394	Oxid Med Cell Longev	WB
Hong Zou	36139126	Biomolecules	WB

Stockage

Stockage:

Stocker à -20°C. Stable pendant un an après l'expédition.

Tampon de stockage:

PBS avec azote de sodium à 0,02 % et glycérol à 50 % pH 7,3

L'aliquotage n'est pas nécessaire pour le stockage à -20C

*** Les 20ul contiennent 0,1% de BSA.

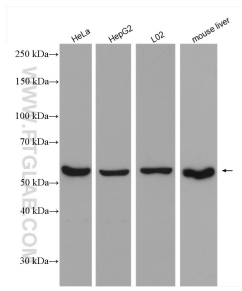
For technical support and original validation data for this product please contact:

T: 1 (888) 4PTGLAB (1-888-478-4522) (toll free in USA), or 1(312) 455-8498 (outside USA)

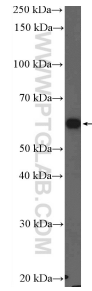
E: proteintech@ptglab.com
W: ptglab.com

This product is exclusively available under Proteintech Group brand and is not available to purchase from any other manufacturer.

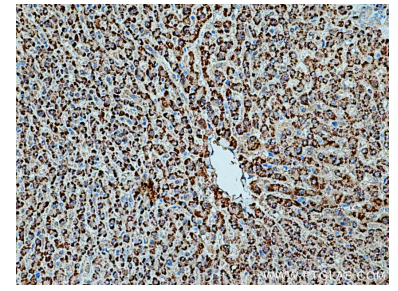
Données de validation sélectionnées



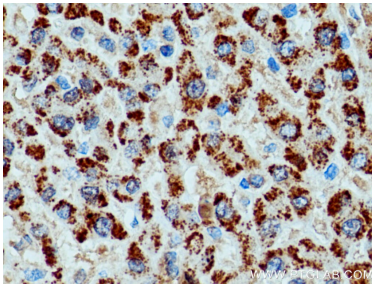
Various lysates were subjected to SDS PAGE followed by western blot with 21260-1-AP (Catalase antibody) at dilution of 1:8000 incubated at room temperature for 1.5 hours.



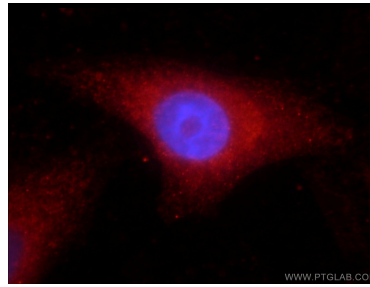
Jurkat cells were subjected to SDS PAGE followed by western blot with 21260-1-AP (Catalase Antibody) at dilution of 1:1000 incubated at room temperature for 1.5 hours.



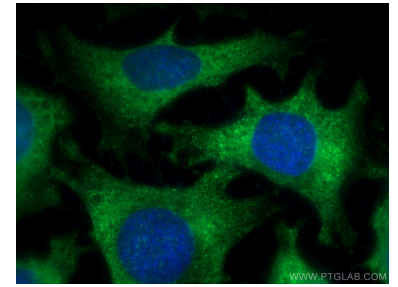
Immunohistochemical analysis of paraffin-embedded human liver cancer tissue slide using 21260-1-AP (Catalase antibody) at dilution of 1:500 (under 10x lens). Heat mediated antigen retrieval with Tris-EDTA buffer (pH 9.0).



Immunohistochemical analysis of paraffin-embedded human liver cancer tissue slide using 21260-1-AP (Catalase antibody) at dilution of 1:500 (under 40x lens). Heat mediated antigen retrieval with Tris-EDTA buffer (pH 9.0).



Immunofluorescent analysis of HepG2 cells using 21260-1-AP (Catalase antibody) at dilution of 1:25 and Rhodamine-Goat anti-Rabbit IgG.



Immunofluorescent analysis of (-20°C Methanol) fixed HeLa cells using Catalase antibody (21260-1-AP) at dilution of 1:100 and Coralite®488-Conjugated AffiniPure Goat Anti-Rabbit IgG(H+L).