

À des fins de recherche uniquement

Anticorps Polyclonal de lapin anti-RB1CC1



Numéro de catalogue: 21269-1-AP **Phare**

Informations de base

Numéro de catalogue:
21269-1-AP

Taille:
150ul, Concentration: 450 µg/ml by
Nanodrop and 380 µg/ml by Bradford
method using BSA as the standard;

Hôte:
Lapin

Isotype:
IgG

Immunogen Catalog Number:
AG15739

Numéro d'acquisition GenBank:
BC017556

Identification du gène (NCBI):
9821

Nom complet:
RB1-inducible coiled-coil 1

MW calculé
1594 aa, 183 kDa

MW observés:
200 kDa

Méthode de purification:
Purification par affinité contre
l'antigène

Dilutions recommandées:
WB 1:500-1:3000

Applications

Applications testées:
WB, ELISA

Spécificité de l'espèce:
Humain, rat, souris

Contrôles positifs:

WB: cellules HeLa, cellules HEK-293, cellules MCF-7

Informations générales

RB1CC1, also named as RBICC, is implicated in the regulation of RB1 expression and functions as a DNA-binding transcription factor. It is a potent regulator of the RB1 pathway and a mediator that plays a crucial role in muscular differentiation. Its expression is, thus, a prerequisite for myogenic differentiation. Involved in autophagy. RB1CC1 is required for autophagosome formation. It is probably involved in the tumorigenesis of breast cancer. RB1CC1 is frequently mutated in breast cancer and shows characteristics of a classical tumor suppressor gene. This antibody is a rabbit polyclonal antibody raised against residues near the N terminus of human RB1CC1.

Stockage

Stockage:

Stocker à -20°C. Stable pendant un an après l'expédition.

Tampon de stockage:

PBS avec azoture de sodium à 0,02 % et glycérol à 50 % pH 7,3

L'aliquotage n'est pas nécessaire pour le stockage à -20C

*** Les 20ul contiennent 0,1% de BSA.

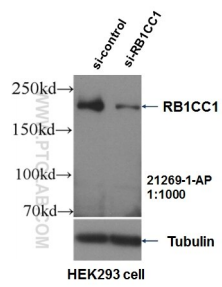
For technical support and original validation data for this product please contact:

T: 1 (888) 4PTGLAB (1-888-478-4522) (toll free
in USA), or 1(312) 455-8498 (outside USA)

E: proteintech@ptglab.com
W: ptglab.com

This product is exclusively available under Proteintech Group brand and is not available to purchase from any other manufacturer.

Données de validation sélectionnées



WB result of RB1CC1 antibody (21269-1-AP, 1:1000) with si-Control and si-RB1CC1 transfected HEK293 cells.



HeLa cells were subjected to SDS PAGE followed by western blot with 21269-1-AP (RB1CC1 antibody) at dilution of 1:500 incubated at room temperature for 1.5 hours.