

À des fins de recherche uniquement

Anticorps Polyclonal de lapin anti-SLC39A2



Numéro de catalogue: 21287-1-AP

Informations de base

Numéro de catalogue: 21287-1-AP	Numéro d'acquisition GenBank: BC096723	Méthode de purification: Purification par affinité contre l'antigène
Taille: 150ul , Concentration: 400 µg/ml by Nanodrop;	Identification du gène (NCBI): 29986	Dilutions recommandées: WB 1:500-1:1000
Hôte: Lapin	Nom complet: solute carrier family 39 (zinc transporter), member 2	
Isotype: IgG	MW calculé: 309 aa, 33 kDa	
Immunogen Catalog Number: AG15807	MW observés: 33 kDa, 66-70 kDa	

Applications

Applications testées: WB, ELISA	Contrôles positifs: WB : cellules K-562,
Spécificité de l'espèce: Humain	

Informations générales

SLC39A2 (hZIP2) is a human zinc importer in ZIP family, which is essential in the maintenance of intracellular zinc homeostasis and upregulated by zinc depletion. SLC39A2 is highly expressed in prostate epithelial cells and involved in prostate cancer development. Most SLC39 proteins consist of eight transmembrane domains (TMDs), with extracellular or intravesicular amino and carboxy termini (PMID: 34790705). Zip2 gene knockout exacerbated myocardial I/R injury, whereas Zip2 gene transfer reduced myocardial infarction (PMID: 31095941). The predicted molecular weight of SLC39A2 is 33 kDa, and a band of dimers at 66 kDa can also be detected by this antibody (PMID: 24619115).

Stockage

Stockage:
Stocker à -20°C. Stable pendant un an après l'expédition.
Tampon de stockage:
PBS avec azoture de sodium à 0,02 % et glycérol à 50 % pH 7,3
L'aliquotage n'est pas nécessaire pour le stockage à -20C

***** Les 20ul contiennent 0,1% de BSA.**

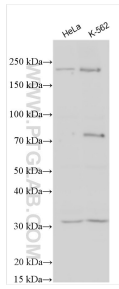
For technical support and original validation data for this product please contact:

T: 1 (888) 4PTGLAB (1-888-478-4522) (toll free in USA), or 1(312) 455-8498 (outside USA)

E: proteintech@ptglab.com
W: ptglab.com

This product is exclusively available under Proteintech Group brand and is not available to purchase from any other manufacturer.

Données de validation sélectionnées



Various lysates were subjected to SDS PAGE followed by western blot with 21287-1-AP (SLC39A2 antibody) at dilution of 1:500 incubated at room temperature for 1.5 hours.