

À des fins de recherche uniquement

Anticorps Polyclonal de lapin anti-ZDHHC5



Numéro de catalogue: 21324-1-AP

Phare

12 Publications

Informations de base

Numéro de catalogue:
21324-1-AP

Taille:
150ul, Concentration: 300 µg/ml by Nanodrop and 273 µg/ml by Bradford method using BSA as the standard;

Hôte:
Lapin

Isotype:
IgG

Immunogen Catalog Number:
AG14891

Numéro d'acquisition GenBank:
BC026967

Identification du gène (NCBI):
25921

Nom complet:
zinc finger, DHHC-type containing 5

MW calculé
715 aa, 78 kDa

MW observés:
77 kDa

Méthode de purification:
Purification par affinité contre l'antigène

Dilutions recommandées:
WB 1:500-1:2000
IP 0.5-4.0 ug for IP and 1:500-1:1000 for WB
IF 1:10-1:100

Applications

Applications testées:
FC, IF, IP, WB, ELISA

Demandes citées:
CoIP, IF, IP, WB

Spécificité de l'espèce:
Humain, rat, souris

Espèces citées:
Humain, souris

Contrôles positifs:

WB : tissu rénal de souris, cellules HEK-293, tissu cérébral de souris

IP : cellules HEK-293,

IF : cellules HeLa,

Informations générales

The gene encoding zinc finger DHHC-type-containing (ZDHHC)5 is located in a region of chromosome 11q12.1 associated with a high rate of chromosomal translocation and variation, which has been linked to the development of various cancers. ZDHHC5 stimulates the proliferation and anchorage-dependent and -independent colony formation of non-small cell lung cancer cell lines, and was found to be required in a subset of these cells for establishment of tumor xenografts in mice. ZDHHC5 is highly expressed in a variety of embryonic cells including neural progenitor cells, but not in most adult tissues.

Publications notables

Autrice	Pubmed ID	Journal	Application
Yinxia Li	34559357	Mol Neurobiol	WB, CoIP
Han Zhang	36309154	J Nutr Biochem	WB
Shaymaa Mohamed Mohamed Badawy	29185452	Sci Rep	WB, IF, IP

Stockage

Stockage:

Stocker à -20°C. Stable pendant un an après l'expédition.

Tampon de stockage:

PBS avec azoture de sodium à 0,02 % et glycérol à 50 % pH 7,3

L'aliquotage n'est pas nécessaire pour le stockage à -20C

*** Les 20ul contiennent 0,1% de BSA.

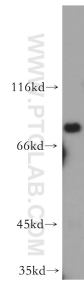
For technical support and original validation data for this product please contact:

T: 1 (888) 4PTGLAB (1-888-478-4522) (toll free in USA), or 1(312) 455-8498 (outside USA)

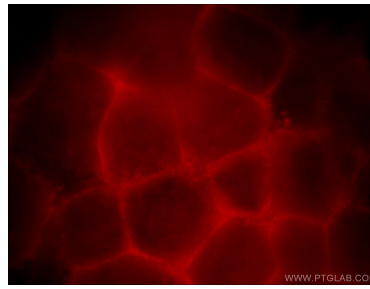
E: proteintech@ptglab.com
W: ptglab.com

This product is exclusively available under Proteintech Group brand and is not available to purchase from any other manufacturer.

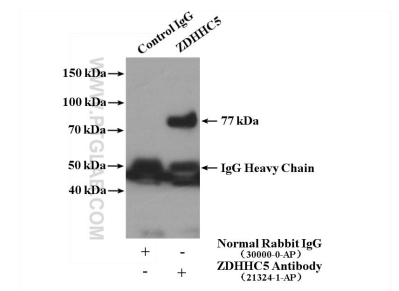
Données de validation sélectionnées



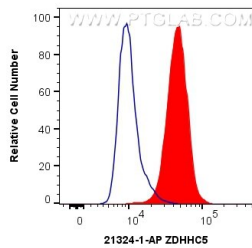
mouse kidney tissue were subjected to SDS PAGE followed by western blot with 21324-1-AP (ZDHC5 antibody) at dilution of 1:500 incubated at room temperature for 1.5 hours.



Immunofluorescent analysis of HeLa cells, using ZDHC5 antibody 21324-1-AP at 1:25 dilution and Rhodamine-labeled goat anti-rabbit IgG (red).



IP result of anti-ZDHC5 (IP:21324-1-AP, 4ug; Detection:21324-1-AP 1:500) with HEK-293 cells lysate 1680 ug.



1X10⁶ HeLa cells were intracellularly stained with 0.4 ug Anti-Human ZDHC5 (21324-1-AP) and CoraLite®488-Conjugated AffiniPure Goat Anti-Rabbit IgG(H+L) at dilution 1:1000 (red), or 0.4 ug Control Antibody. Cells were fixed with 4% PFA and permeabilized with Flow Cytometry Perm Buffer (PF00011-C).