

À des fins de recherche uniquement

Anticorps Polyclonal de lapin anti-C9orf7 / CACFD1



Numéro de catalogue: 21330-1-AP

Informations de base

Numéro de catalogue: 21330-1-AP	Numéro d'acquisition GenBank: BC030558	Méthode de purification: Purification par affinité contre l'antigène
Taille: 150ul , Concentration: 400 µg/ml by Nanodrop;	Identification du gène (NCBI): 11094	Dilutions recommandées: WB 1:500-1:2000
Hôte: Lapin	Nom complet: chromosome 9 open reading frame 7	
Isotype: IgG	MW calculé: 172 aa, 18 kDa	
Immunogen Catalog Number: AG15336	MW observés: ~25 kDa	

Applications

Applications testées: WB, ELISA	Contrôles positifs: WB : tissu testiculaire de souris, tissu testiculaire de rat
Spécificité de l'espèce: Humain, rat, souris	

Informations générales

Calcium Channel Flower Domain Containing 1 (CACFD1) also named as C9orf7 or human Flower protein (hFWE). In *Drosophila*, cell selection uses a cell selection mechanism based on 'fitness fingerprints', which allow it to delay ageing, prevent developmental malformations and replace old tissues during regeneration. At the molecular level, these fitness fingerprints consist of combinations of Flower membrane proteins. Proteins that indicate reduced fitness are called Flower-Lose, because they are expressed in cells marked to be eliminated. It has different isoforms, the calculated MW rang from 14-25 kDa. 21330-1-AP can detect a band around 25 kDa.(PMID:31341286)

Stockage

Stockage:
Stocker à -20°C. Stable pendant un an après l'expédition.
Tampon de stockage:
PBS avec azoture de sodium à 0,02 % et glycérol à 50 % pH 7,3
L'aliquotage n'est pas nécessaire pour le stockage à -20C

*** Les 20ul contiennent 0,1% de BSA.

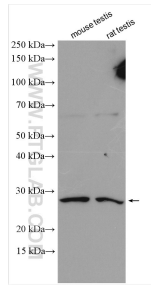
For technical support and original validation data for this product please contact:

T: 1 (888) 4PTGLAB (1-888-478-4522) (toll free in USA), or 1(312) 455-8498 (outside USA)

E: proteintech@ptglab.com
W: ptglab.com

This product is exclusively available under Proteintech Group brand and is not available to purchase from any other manufacturer.

Données de validation sélectionnées



Various lysates were subjected to SDS PAGE followed by western blot with 21330-1-AP (C9orf7 antibody) at dilution of 1:1000 incubated at room temperature for 1.5 hours.