

À des fins de recherche uniquement

# Anticorps Polyclonal de lapin anti-C3/C3b/C3c



Numéro de catalogue: 21337-1-AP

Phare

44 Publications

## Informations de base

Numéro de catalogue:

21337-1-AP

Taille:

150ul, Concentration: 400 µg/ml by Nanodrop;

Hôte:

Lapin

Isotype:

IgG

Immunogen Catalog Number:

AG15537

Numéro d'acquisition GenBank:

BC150179

Identification du gène (NCBI):

718

Nom complet:

complement component 3

MW calculé

1663 aa, 187 kDa

MW observés:

115 kDa

Méthode de purification:

Purification par affinité contre l'antigène

Dilutions recommandées:

WB 1:5000-1:50000

IP 0.5-4.0 ug for IP and 1:500-1:2000 for WB

IHC 1:1000-1:4000

IF 1:50-1:500

## Applications

Applications testées:

IF, IHC, IP, WB, ELISA

Demandes citées:

IF, IHC, WB

Spécificité de l'espèce:

Humain, rat, souris

Espèces citées:

bovin, Humain, porc, rat, souris

Contrôles positifs:

WB : rat plasma, plasma humain

IP : tissu plasmatique humain,

IHC : tissu hépatique humain, tissu de cancer du foie humain, tissu rénal de souris

IF : tissu de cancer du foie humain,

**Remarque-IHC: il est suggéré de démasquer l'antigène avec un tampon de TE buffer pH 9,0; (\*) À défaut, 'le démasquage de l'antigène peut être effectué avec un tampon citrate pH 6,0.**

## Informations générales

The complement system is an important effector which bridges the innate and adaptive immune systems (PMID: 20010915). The third component of complement, C3, plays a central role in the activation of the complement system. Its processing by C3 convertase is the central reaction in both classical and alternative complement pathways (PMID: 11414361). Human C3, composed of  $\alpha$  and  $\beta$  chains (115 and 75 kDa, respectively), is cleaved into C3a and C3b by C3 convertase. C3b is further cleaved into iC3b, C3c, C3dg, and C3f. This antibody raised against 1314-1663 aa of human C3 protein recognizes C3 alpha chain, C3b alpha' chain, and C3c alpha' chain fragment 2.

## Publications notables

Autrice	Pubmed ID	Journal	Application
Jing-Yi Hou	36126455	Biomed Pharmacother	IF
Xiao Zhai	34496892	J Nanobiotechnology	IF
Ruonan Gao	36306990	Free Radic Biol Med	IF, WB

## Stockage

Stockage:

Stocker à -20°C. Stable pendant un an après l'expédition.

Tampon de stockage:

PBS avec azoture de sodium à 0,02 % et glycérol à 50 % pH 7,3

L'aliquotage n'est pas nécessaire pour le stockage à -20C

\*\*\* Les 20ul contiennent 0,1% de BSA.

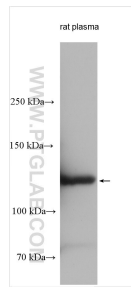
For technical support and original validation data for this product please contact:

T: 1 (888) 4PTGLAB (1-888-478-4522) (toll free in USA), or 1(312) 455-8498 (outside USA)

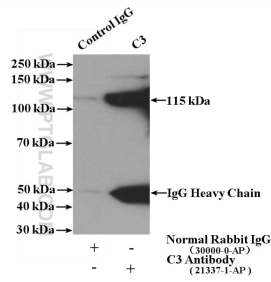
E: proteintech@ptglab.com  
W: ptglab.com

This product is exclusively available under Proteintech Group brand and is not available to purchase from any other manufacturer.

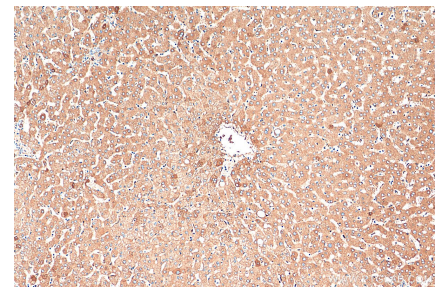
## Données de validation sélectionnées



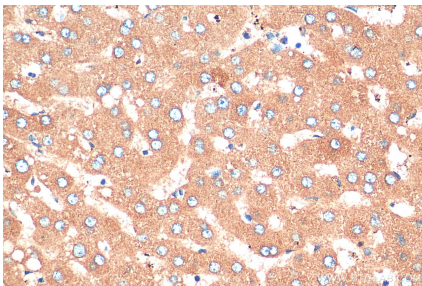
rat plasma was subjected to SDS PAGE followed by western blot with 21337-1-AP (C3/C3b/C3c antibody) at dilution of 1:10000 incubated at room temperature for 1.5 hours.



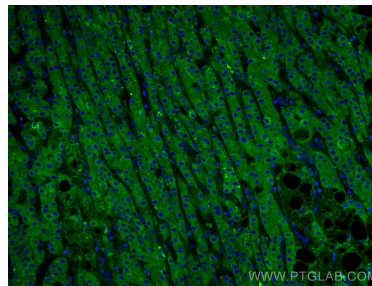
IP result of anti-C3/C3b/C3c (IP:21337-1-AP, 4ug; Detection:21337-1-AP 1:1000) with human plasma lysate 4000 ug.



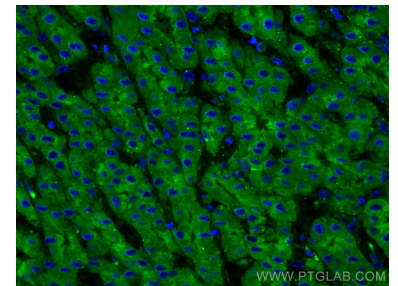
Immunohistochemical analysis of paraffin-embedded human liver tissue slide using 21337-1-AP (C3/C3b/C3c antibody) at dilution of 1:2000 (under 10x lens). Heat mediated antigen retrieval with Tris-EDTA buffer (pH 9.0).



Immunohistochemical analysis of paraffin-embedded human liver tissue slide using 21337-1-AP (C3/C3b/C3c antibody) at dilution of 1:2000 (under 40x lens). Heat mediated antigen retrieval with Tris-EDTA buffer (pH 9.0).



Immunofluorescent analysis of (4% PFA) fixed human liver cancer tissue using C3/C3b/C3c antibody (21337-1-AP) at dilution of 1:200 and CoraLite@488-Conjugated AffiniPure Goat Anti-Rabbit IgG(H+L).



Immunofluorescent analysis of (4% PFA) fixed human liver cancer tissue using C3/C3b/C3c antibody (21337-1-AP) at dilution of 1:200 and CoraLite@488-Conjugated AffiniPure Goat Anti-Rabbit IgG(H+L).