

À des fins de recherche uniquement

Anticorps Polyclonal de lapin anti-ASCL2



Numéro de catalogue: 21368-1-AP

Informations de base

Numéro de catalogue: 21368-1-AP	Numéro d'acquisition GenBank: BC057801	Méthode de purification: Purification par affinité contre l'antigène
Taille: 150ul , Concentration: 550 µg/ml by Nanodrop;	Identification du gène (NCBI): 430	Dilutions recommandées: WB 1:500-1:1000
Hôte: Lapin	Nom complet: achaete-scute complex homolog 2 (Drosophila)	
Isotype: IgG	MW calculé: 193 aa, 20 kDa	
Immunogen Catalog Number: AG15839	MW observés: 20 kDa	

Applications

Applications testées: WB, ELISA	Contrôles positifs: WB : cellules MKN-45, cellules Caco-2
Spécificité de l'espèce: Humain	

Informations générales

Achaete-scute complex homolog 2 (Drosophila), also known as ASCL2, is an imprinted human gene. This gene is involved in the determination of the neuronal precursors in the peripheral nervous system and the central nervous system, particularly important during implantation of the developing embryo, specifically in placental development and neuronal precursor determination. ASCL2 has been reported involved in tumor progression, being upregulated in colorectal tumors, and involvement in metastasis could be attributed to ASCL2-promoted cellular self-renewal as opposed to cellular differentiation (PMID: 30096149 16568095).

Stockage

Stockage:
Stocker à -20°C. Stable pendant un an après l'expédition.
Tampon de stockage:
PBS avec azoture de sodium à 0,02 % et glycérol à 50 % pH 7,3
L'aliquotage n'est pas nécessaire pour le stockage à -20C

*** Les 20ul contiennent 0,1% de BSA.

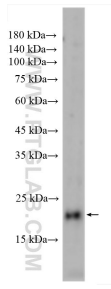
For technical support and original validation data for this product please contact:

T: 1 (888) 4PTGLAB (1-888-478-4522) (toll free in USA), or 1(312) 455-8498 (outside USA)

E: proteintech@ptglab.com
W: ptglab.com

This product is exclusively available under Proteintech Group brand and is not available to purchase from any other manufacturer.

Données de validation sélectionnées



MKN-45 cells were subjected to SDS PAGE followed by western blot with 21368-1-AP (ASCL2 antibody) at dilution of 1:500 incubated at room temperature for 1.5 hours.