

À des fins de recherche uniquement

Anticorps Polyclonal de lapin anti-Pan-PAX



Numéro de catalogue: 21383-1-AP

5 Publications

Informations de base

Numéro de catalogue:
21383-1-AP

Taille:
150ul, Concentration: 450 µg/ml by Nanodrop and 353 µg/ml by Bradford method using BSA as the standard;

Hôte:
Lapin

Isotype:
IgG

Immunogen Catalog Number:
AG16018

Numéro d'acquisition GenBank:
BC001060

Identification du gène (NCBI):
7849

Nom complet:
paired box 8

MW calculé:
450 aa, 48 kDa

MW observés:
36-48 kDa

Méthode de purification:
Purification par affinité contre l'antigène

Dilutions recommandées:
WB 1:500-1:2000
IP 0.5-4.0 ug for IP and 1:500-1:1000 for WB
IHC 1:50-1:500
IF 1:200-1:800

Applications

Applications testées:
IF, IHC, IP, WB, ELISA

Demandes citées:
IF, IHC

Spécificité de l'espèce:
Humain, rat, souris

Espèces citées:
Humain, porc, rat, souris

Remarque-IHC: il est suggéré de démasquer l'antigène avec un tampon de TE buffer pH 9.0; (*) A défaut, 'le démasquage de l'antigène peut être effectué avec un tampon citrate pH 6,0.

Contrôles positifs:

WB : cellules SKOV-3, cellules A2780

IP : cellules SKOV-3,

IHC : tissu de tumeur ovarienne humain, tissu de carcinome à cellules rénales humain, tissu rénal humain

IF : cellules SKOV-3,

Informations générales

PAX genes encode a family of developmentally regulated transcription factors that have been implicated in a number of human and murine congenital disorders, as well as in tumorigenesis. These genes are defined by the presence of an evolutionarily conserved DNA binding domain, termed the paired domain. Many paired domain-containing proteins recognize a common sequence motif. The immunogen of this antibody is the Paired box domain of PAX family. This antibody is a Pan-PAX antibody.

Publications notables

Autrice	Pubmed ID	Journal	Application
Zi-Yang Zhang	32606037	Sci Signal	IHC
Sergio E Palma-Vera	28231273	PLoS One	IF
Qiwang Ma	29198839	Life Sci	IF

Stockage

Stockage:

Stocker à -20°C. Stable pendant un an après l'expédition.

Tampon de stockage:

PBS avec azoture de sodium à 0,02 % et glycérol à 50 % pH 7,3

L'aliquotage n'est pas nécessaire pour le stockage à -20C

*** Les 20ul contiennent 0,1% de BSA.

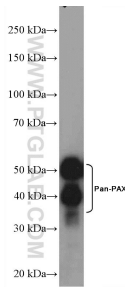
For technical support and original validation data for this product please contact:

T: 1 (888) 4PTGLAB (1-888-478-4522) (toll free in USA), or 1(312) 455-8498 (outside USA)

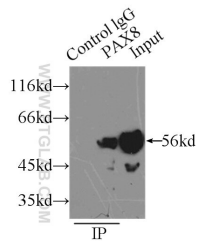
E: proteintech@ptglab.com
W: ptglab.com

This product is exclusively available under Proteintech Group brand and is not available to purchase from any other manufacturer.

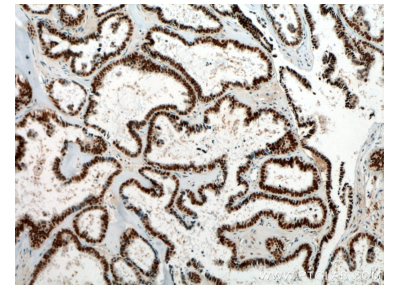
Données de validation sélectionnées



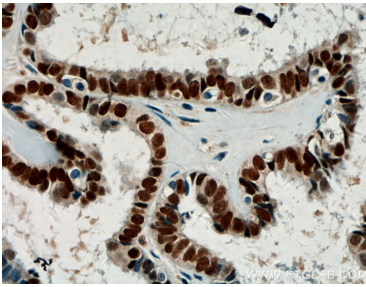
SKOV-3 cells were subjected to SDS PAGE followed by western blot with 21383-1-AP (Pan-PAX antibody) at dilution of 1:1000 incubated at room temperature for 1.5 hours.



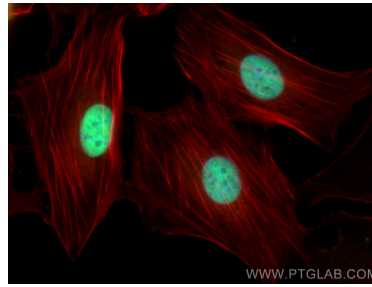
IP Result of anti-pan-PAX (IP:21383-1-AP, 3ug; Detection:21383-1-AP 1:800) with SKOV-3 cells lysate 2500ug.



Immunohistochemical analysis of paraffin-embedded human ovary tumor tissue slide using 21383-1-AP (Pan-PAX antibody) at dilution of 1:200 (under 10x lens. Heat mediated antigen retrieval with Tris-EDTA buffer (pH 9.0).



Immunohistochemical analysis of paraffin-embedded human ovary tumor tissue slide using 21383-1-AP (Pan-PAX antibody) at dilution of 1:200 (under 40x lens. Heat mediated antigen retrieval with Tris-EDTA buffer (pH 9.0).



Immunofluorescent analysis of (4% PFA) fixed SKOV-3 cells using Pan-PAX antibody (21383-1-AP) at dilution of 1:400 and Coralite®488-Conjugated AffiniPure Goat Anti-Rabbit IgG(H+L), CL594-Phalloidin (red).