

À des fins de recherche uniquement

Anticorps Polyclonal de lapin anti-ALDH1L2



Numéro de catalogue: 21391-1-AP

7 Publications

Informations de base

Numéro de catalogue: 21391-1-AP	Numéro d'acquisition GenBank: BC103935	Méthode de purification: Purification par affinité contre l'antigène
Taille: 150ul , Concentration: 600 µg/ml by Nanodrop;	Identification du gène (NCBI): 160428	Dilutions recommandées: WB 1:500-1:3000 IHC 1:20-1:200
Hôte: Lapin	Nom complet: aldehyde dehydrogenase 1 family, member L2	
Isotype: IgG	MW calculé 923 aa, 102 kDa	
Immunogen Catalog Number: AG16046	MW observés: 102 kDa, 89 kDa	

Applications

Applications testées:
IHC, WB, ELISA

Demandes citées:
IHC, WB

Spécificité de l'espèce:
Humain, rat, souris

Espèces citées:
Humain, porc, souris

Contrôles positifs:

WB : tissu pancréatique de souris, tissu pancréatique de rat

IHC : tissu pancréatique humain, tissu cardiaque humain

Remarque-IHC: il est suggéré de démasquer l'antigène avec un tampon de TE buffer pH 9,0; (*) À défaut, le démasquage de l'antigène peut être effectué avec un tampon citrate pH 6,0.

Informations générales

ALDH1L2(Aldehyde dehydrogenase family 1 member L2) is also named as mitochondrial 10-FTHFDH, mtFDH and belongs to the aldehyde dehydrogenase family and ALDH1L subfamily. The ALDH1L2 gene has three transcriptional variants with the molecular weight of 102 kDa, 42 kDa and 89 kDa(PMID:19823103). It is a mitochondrial enzyme, a likely source of CO₂ production from 10-formyltetrahydrofolate in mitochondria and playing an essential role in the distribution of one-carbon groups between the cytosolic and mitochondrial compartments of the cell(PMID:20498374). It also has dehydrogenase/hydrolase activities similar to cytosolic FDH (ALDH1L1). The native ALDH1L2 has been reported to exist as a dimer or tetramer(PMID:7822273).

Publications notables

Autrice	Pubmed ID	Journal	Application
Alessandra Fiore	35245456	Mol Cell	WB
Eduardo Balsa	32483148	Nat Commun	WB
Yang Zhang	35857842	Sci Adv	IHC

Stockage

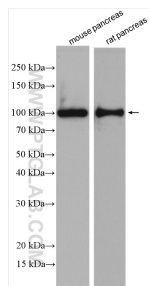
Stockage:
Stocker à -20°C. Stable pendant un an après l'expédition.
Tampon de stockage:
PBS avec azoture de sodium à 0,02 % et glycérol à 50 % pH 7,3
L'aliquotage n'est pas nécessaire pour le stockage à -20C

*** Les 20ul contiennent 0,1% de BSA.

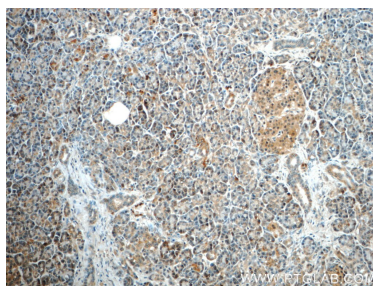
For technical support and original validation data for this product please contact:
T: 1 (888) 4PTGLAB (1-888-478-4522) (toll free in USA), or 1(312) 455-8498 (outside USA)
E: proteintech@ptglab.com
W: ptglab.com

This product is exclusively available under Proteintech Group brand and is not available to purchase from any other manufacturer.

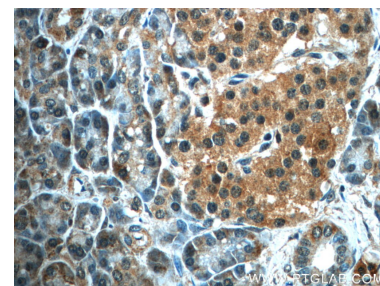
Données de validation sélectionnées



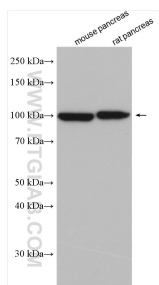
Various lysates were subjected to SDS PAGE followed by western blot with 21391-1-AP (ALDH1L2 antibody) at dilution of 1:1500 incubated at room temperature for 1.5 hours.



Immunohistochemical analysis of paraffin-embedded human pancreas slide using 21391-1-AP (ALDH1L2 Antibody) at dilution of 1:50.



Immunohistochemical analysis of paraffin-embedded human pancreas slide using 21391-1-AP (ALDH1L2 Antibody) at dilution of 1:50.



Various lysates were subjected to SDS PAGE followed by western blot with 21391-1-AP (ALDH1L2 antibody) at dilution of 1:8000 incubated at room temperature for 1.5 hours.