

À des fins de recherche uniquement

Anticorps Polyclonal de lapin anti-PAK1



Numéro de catalogue: 21401-1-AP

Phare

17 Publications

Informations de base

Numéro de catalogue:

21401-1-AP

Numéro d'acquisition GenBank:

BC109299

Méthode de purification:

Purification par affinité contre l'antigène

Taille:

150ul, Concentration: 1200 µg/ml by Nanodrop and 673 µg/ml by Bradford method using BSA as the standard;

Identification du gène (NCBI):

5058

Dilutions recommandées:

WB 1:1000-1:6000

Hôte:

Lapin

Nom complet:

p21 protein (Cdc42/Rac)-activated kinase 1

IP 0.5-4.0 ug for IP and 1:500-1:2000 for WB

Isotype:

IgG

MW calculé

553 aa, 62 kDa

IHC 1:50-1:500

IF 1:10-1:100

Immunogen Catalog Number:

AG16102

MW observés:

61-65 kDa

Applications

Applications testées:

IF, IHC, IP, WB, ELISA

Demandes citées:

CoIP, IF, IHC, WB

Spécificité de l'espèce:

Humain, rat, souris

Espèces citées:

Humain, poulet, rat, souris

Remarque-IHC: il est suggéré de démasquer l'antigène avec un tampon de TE buffer pH 9,0; (*) A défaut, 'le démasquage de l'antigène peut être effectué avec un tampon citrate pH 6,0.

Contrôles positifs:

WB : cellules C6, cellules HeLa, cellules Jurkat, cellules K-562, cellules MCF-7, cellules NIH/3T3

IP : cellules K-562,

IHC : tissu cérébral de souris, tissu de cancer du sein humain

IF : cellules C6,

Informations générales

The p21-Activated kinase 1 (PAK1), a member of serine-threonine kinases family, was initially identified as an interactor of the Rho GTPases RAC1 and CDC42, which affect a wide range of processes associated with cell motility, survival, metabolism, cell cycle, proliferation, transformation, stress, inflammation, and gene expression (PMID: 32863957). PAK1 is over-expressed in various malignancies such as ovarian, breast, lung, and bladder cancers, and is closely associated with tumor invasion.

Publications notables

Autrice	Pubmed ID	Journal	Application
Yu-Yuan Zhang	36259516	J Biol Chem	WB
Dongmei Wang	36224320	Mol Neurobiol	IF
Pei Xia	30442385	Gynecol Oncol	WB

Stockage

Stockage:

Stocker à -20°C. Stable pendant un an après l'expédition.

Tampon de stockage:

PBS avec azoture de sodium à 0,02 % et glycérol à 50 % pH 7,3

L'aliquotage n'est pas nécessaire pour le stockage à -20C

*** Les 20ul contiennent 0,1% de BSA.

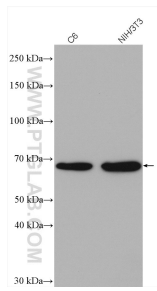
For technical support and original validation data for this product please contact:

T: 1 (888) 4PTGLAB (1-888-478-4522) (toll free in USA), or 1(312) 455-8498 (outside USA)

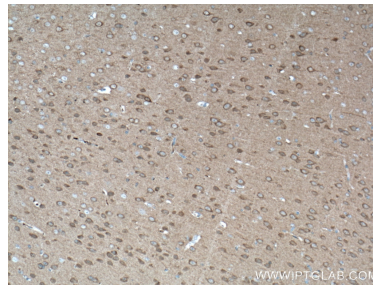
E: proteintech@ptglab.com
W: ptglab.com

This product is exclusively available under Proteintech Group brand and is not available to purchase from any other manufacturer.

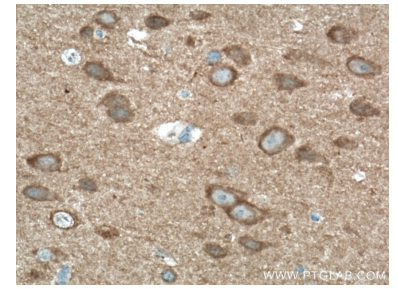
Données de validation sélectionnées



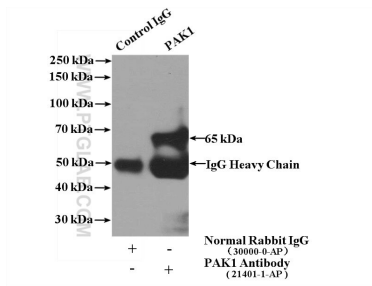
Various lysates were subjected to SDS PAGE followed by western blot with 21401-1-AP (PAK1 antibody) at dilution of 1:3000 incubated at room temperature for 1.5 hours.



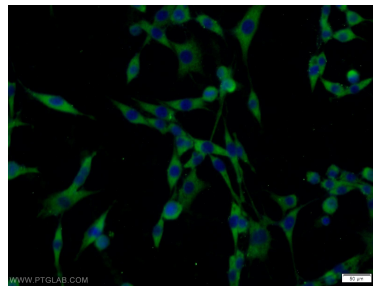
Immunohistochemical analysis of paraffin-embedded mouse brain tissue slide using 21401-1-AP (PAK1 antibody) at dilution of 1:200 (under 10x lens. Heat mediated antigen retrieval with Tris-EDTA buffer (pH 9.0).



Immunohistochemical analysis of paraffin-embedded mouse brain tissue slide using 21401-1-AP (PAK1 antibody) at dilution of 1:200 (under 40x lens. Heat mediated antigen retrieval with Tris-EDTA buffer (pH 9.0).



IP Result of anti-PAK1 (IP:21401-1-AP, 4ug; Detection:21401-1-AP 1:1000) with K-562 cells lysate 3200ug.



Immunofluorescent analysis of C6 cells using 21401-1-AP (PAK1 antibody) at dilution of 1:25 and Alexa Fluor 488-conjugated AffiniPure Goat Anti-Rabbit IgG(H+L).