

À des fins de recherche uniquement

Anticorps Polyclonal de lapin anti-UHRF1



Numéro de catalogue: 21402-1-AP

Phare

16 Publications

Informations de base

Numéro de catalogue:

21402-1-AP

Taille:

150ul, Concentration: 550 µg/ml by Nanodrop and 333 µg/ml by Bradford method using BSA as the standard;

Hôte:

Lapin

Isotype:

IgG

Immunogen Catalog Number:

AG16111

Numéro d'acquisition GenBank:

BC113875

Identification du gène (NCBI):

29128

Nom complet:

ubiquitin-like with PHD and ring finger domains 1

MW calculé

806 aa, 91 kDa

MW observés:

91 kDa

Méthode de purification:

Purification par affinité contre l'antigène

Dilutions recommandées:

WB 1:500-1:2000

IP 0.5-4.0 ug for IP and 1:500-1:2000 for WB

IF 1:200-1:800

Applications

Applications testées:

IF, IP, WB, ELISA

Demandes citées:

CoIP, IF, IHC, RIP, WB

Spécificité de l'espèce:

Humain

Espèces citées:

Humain, souris

Contrôles positifs:

WB : cellules HeLa, cellules MCF-7

IP : cellules HeLa,

IF : cellules HepG2,

Informations générales

UHRF1, also named as ICBP90, NP95 and RNF106, is a putative E3 ubiquitin-protein ligase. It may participate in methylation-dependent transcriptional regulation. UHRF1 binds to inverted 5'-CCAAT-3' box 2 in the TOP2A promoter, and activates TOP2A expression. It is important for G1/S transition and may be involved in DNA repair and chromosomal stability. UHRF1's ability to repress its direct target gene expression is dependent on PHD(UHRF1) binding to unmodified H3R2. In addition, UHRF1 is a novel metabolic guardian restricting AMPK activity(PMID: 34907338).

Publications notables

Autrice	Pubmed ID	Journal	Application
Leyang Xiang	32808348	Cancer Sci	WB
Wei Deng	25833338	Cell Physiol Biochem	WB
Federica Morani	33800494	Int J Mol Sci	WB

Stockage

Stockage:

Stocker à -20°C. Stable pendant un an après l'expédition.

Tampon de stockage:

PBS avec azoture de sodium à 0,02 % et glycérol à 50 % pH 7,3

L'aliquotage n'est pas nécessaire pour le stockage à -20C

*** Les 20ul contiennent 0,1% de BSA.

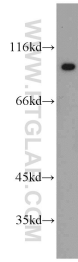
For technical support and original validation data for this product please contact:

T: 1 (888) 4PTGLAB (1-888-478-4522) (toll free in USA), or 1(312) 455-8498 (outside USA)

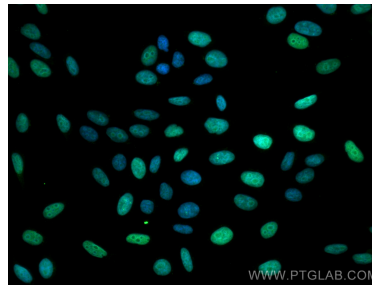
E: proteintech@ptglab.com
W: ptglab.com

This product is exclusively available under Proteintech Group brand and is not available to purchase from any other manufacturer.

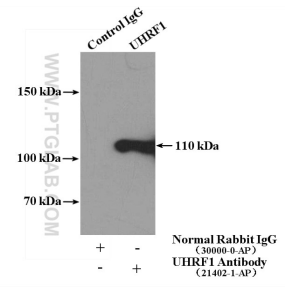
Données de validation sélectionnées



HeLa cells were subjected to SDS PAGE followed by western blot with 21402-1-AP (UHRF1 antibody) at dilution of 1:300 incubated at room temperature for 1.5 hours.



Immunofluorescent analysis of (4% PFA) fixed HepG2 cells using UHRF1 antibody (21402-1-AP) at dilution of 1:400 and CoraLite@488-Conjugated AffiniPure Goat Anti-Rabbit IgG(H+L).



IP Result of anti-UHRF1 (IP:21402-1-AP, 4ug; Detection:21402-1-AP 1:1000) with HeLa cells lysate 3200ug.