

À des fins de recherche uniquement

Anticorps Polyclonal de lapin anti-MYH10



Numéro de catalogue: 21403-1-AP

Informations de base

Numéro de catalogue:
21403-1-AP

Taille:
150ul, Concentration: 900 µg/ml by
Nanodrop and 433 µg/ml by Bradford
method using BSA as the standard;

Hôte:
Lapin

Isotype:
IgG

Immunogen Catalog Number:
AG16113

Numéro d'acquisition GenBank:
BC150634

Identification du gène (NCBI):
4628

Nom complet:
myosin, heavy chain 10, non-muscle

MW calculé
1985 aa, 230 kDa

MW observés:
229 kDa

Méthode de purification:
Purification par affinité contre
l'antigène

Dilutions recommandées:
WB 1:2000-1:10000
IP 0.5-4.0 ug for IP and 1:500-1:3000
for WB
IF 1:10-1:100

Applications

Applications testées:
FC, IF, IP, WB, ELISA

Spécificité de l'espèce:
Humain, rat, souris

Contrôles positifs:

WB : tissu cérébral de souris, cerveau de rat

IP : tissu cérébral de souris,

IF : cellules HepG2,

Informations générales

MYH10 (non-muscle II-b, NM IIB) is a member of non-muscle myosin II which plays fundamental roles in the maintenance of cell morphology, cell adhesion, and migration, as well as cell division. MYH10 is mainly present in nerve cells, megakaryocytes, and other non-muscle cells. It has been reported to mediate centrosome reorientation during cell migration and contribute to ciliogenesis. Overexpression of MYH10 has been observed in breast cancer.

Stockage

Stockage:

Stocker à -20°C. Stable pendant un an après l'expédition.

Tampon de stockage:

PBS avec azoture de sodium à 0,02 % et glycérol à 50 % pH 7,3

L'aliquotage n'est pas nécessaire pour le stockage à -20C

*** Les 20ul contiennent 0,1% de BSA.

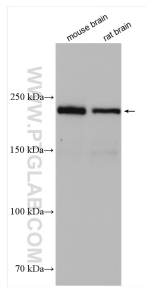
For technical support and original validation data for this product please contact:

T: 1 (888) 4PTGLAB (1-888-478-4522) (toll free
in USA), or 1(312) 455-8498 (outside USA)

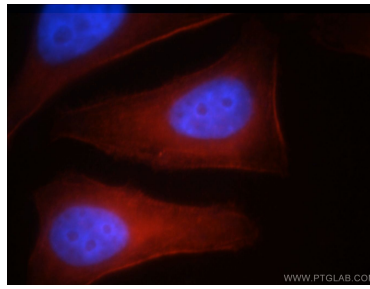
E: proteintech@ptglab.com
W: ptglab.com

This product is exclusively available under Proteintech Group brand and is not available to purchase from any other manufacturer.

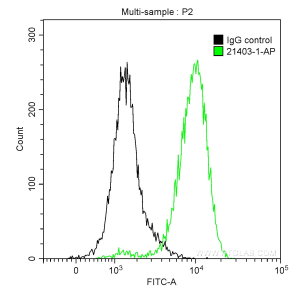
Données de validation sélectionnées



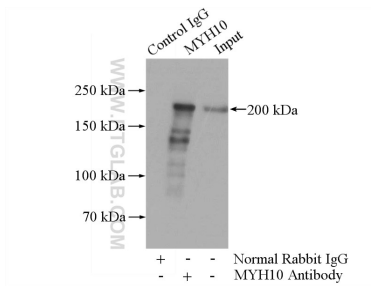
Various lysates were subjected to SDS PAGE followed by western blot with 21403-1-AP (MYH10 antibody) at dilution of 1:5000 incubated at room temperature for 1.5 hours.



Immunofluorescent analysis of HepG2 cells, using MYH10 antibody 21403-1-AP at 1:25 dilution and Rhodamine-labeled goat anti-rabbit IgG (red). Blue pseudocolor = DAPI (fluorescent DNA dye).



1×10^6 HepG2 cells were intracellularly stained with 0.2 ug Anti-Human MYH10 (21403-1-AP) and CoraLite@488-Conjugated AffiniPure Goat Anti-Rabbit IgG(H+L) at dilution 1:1000 (green), and 0.2 ug Control Antibody. Cells were fixed with 90% MeOH.



IP Result of anti-MYH10 (IP:21403-1-AP, 4ug; Detection:21403-1-AP 1:1500) with mouse brain tissue lysate 3440ug.