

À des fins de recherche uniquement

# Anticorps Polyclonal de lapin anti-SMMHC



Numéro de catalogue: 21404-1-AP

36 Publications

## Informations de base

<b>Numéro de catalogue:</b> 21404-1-AP	<b>Numéro d'acquisition GenBank:</b> BC104906	<b>Méthode de purification:</b> Purification par affinité contre l'antigène
<b>Taille:</b> 150ul, Concentration: 700 µg/ml by Nanodrop;	<b>Identification du gène (NCBI):</b> 4629	<b>Dilutions recommandées:</b> WB 1:1000-1:4000 IHC 1:1000-1:4000 IF 1:50-1:500
<b>Hôte:</b> Lapin	<b>Nom complet:</b> myosin, heavy chain 11, smooth muscle	
<b>Isotype:</b> IgG	<b>MW calculé:</b> 1979 aa, 228 kDa	
<b>Immunogen Catalog Number:</b> AG16114	<b>MW observés:</b> 200 kDa	

## Applications

**Applications testées:**  
FC, IF, IHC, WB, ELISA

**Demandes citées:**  
IF, IHC, WB

**Spécificité de l'espèce:**  
Humain, rat, souris

**Espèces citées:**  
Humain, rat, souris

**Contrôles positifs:**

**WB :** tissu utérin de souris,

**IHC :** tissu de côlon humain, tissu de muscle squelettique humain, tissu oculaire de rat, tissu oculaire de souris, tissu vésical de rat

**IF :** tissu cardiaque de souris,

**Remarque-IHC: il est suggéré de démasquer l'antigène avec un tampon de TE buffer pH 9,0; (\*) À défaut, le démasquage de l'antigène peut être effectué avec un tampon citrate pH 6,0.**

## Informations générales

SMMHC (smooth muscle myosin heavy chain; MYH11) is a contractile protein of smooth muscle cells. It is specifically expressed in cells derived from smooth muscle lineages. SMMHC is used as vascular smooth muscle cell (vSMC) contractile marker. It is also an excellent marker for myoepithelial cells, with no or few cross-reaction with myofibroblasts, thus very useful in the evaluation of stromal invasion.

## Publications notables

Autrice	Pubmed ID	Journal	Application
Jinghan Lin	36155059	Biochem Biophys Res Commun	WB
Ziqing Li	32886850	Acta Physiol (Oxf)	WB
Yuan Yuan Li	34732321	Immunol Lett	WB, IF

## Stockage

**Stockage:**

Stocker à -20°C. Stable pendant un an après l'expédition.

**Tampon de stockage:**

PBS avec azoture de sodium à 0,02 % et glycérol à 50 % pH 7,3

L'aliquotage n'est pas nécessaire pour le stockage à -20C

\*\*\* Les 20ul contiennent 0,1% de BSA.

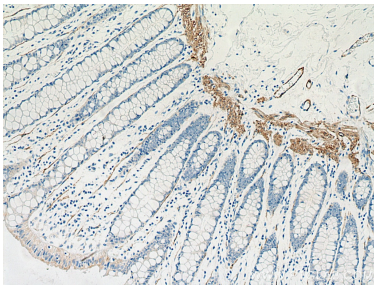
For technical support and original validation data for this product please contact:

T: 1 (888) 4PTGLAB (1-888-478-4522) (toll free in USA), or 1(312) 455-8498 (outside USA)

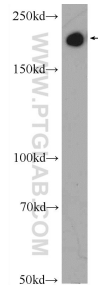
E: proteintech@ptglab.com  
W: ptglab.com

This product is exclusively available under Proteintech Group brand and is not available to purchase from any other manufacturer.

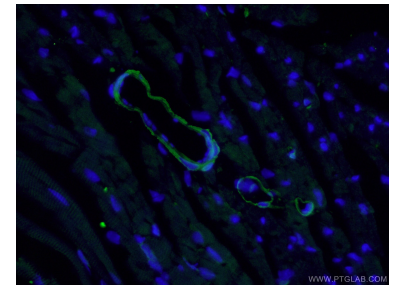
## Données de validation sélectionnées



Immunohistochemical analysis of paraffin-embedded human colon tissue slide using 21404-1-AP (SMMHC antibody) at dilution of 1:2000 (under 10x lens). Heat mediated antigen retrieval with Tris-EDTA buffer (pH 9.0).



mouse uterus tissue were subjected to SDS PAGE followed by western blot with 21404-1-AP (SMMHC antibody at dilution of 1:2000 incubated at room temperature for 1.5 hours.



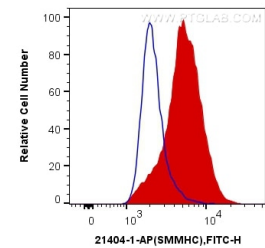
Immunofluorescent analysis of (4% PFA) fixed mouse heart tissue using 21404-1-AP (SMMHC antibody) at dilution of 1:50 and Alexa Fluor 488-conjugated AffiniPure Goat Anti-Rabbit IgG(H+L).



Immunohistochemical analysis of paraffin-embedded rat eye tissue slide using 21404-1-AP (SMMHC antibody) at dilution of 1:2000 (under 40x lens). Heat mediated antigen retrieval with Tris-EDTA buffer (pH 9.0).



Immunohistochemical analysis of paraffin-embedded mouse eye tissue slide using 21404-1-AP (SMMHC antibody) at dilution of 1:2000 (under 40x lens). Heat mediated antigen retrieval with Tris-EDTA buffer (pH 9.0).



1x10<sup>6</sup> C2C12 cells were intracellularly stained with 0.4 ug Anti-Human SMMHC (21404-1-AP) and CoraLite®488-Conjugated AffiniPure Goat Anti-Rabbit IgG(H+L) at dilution 1:1000 (red), or 0.4 ug Control Antibody. Cells were fixed with 4% PFA and permeabilized with Flow Cytometry Perm Buffer (PF00011-C).