

À des fins de recherche uniquement

Anticorps Polyclonal de lapin anti-INPP5J



Numéro de catalogue: 21417-1-AP

2 Publications

Informations de base

Numéro de catalogue:

21417-1-AP

Taille:

150ul, Concentration: 200 µg/ml by Nanodrop and 167 µg/ml by Bradford method using BSA as the standard;

Hôte:

Lapin

Isotype:

IgG

Immunogen Catalog Number:

AG15996

Numéro d'acquisition GenBank:

BC109288

Identification du gène (NCBI):

27124

Nom complet:

inositol polyphosphate-5-phosphatase J

MW calculé

1006 aa, 107 kDa

MW observés:

107 kDa, 70 kDa

Méthode de purification:

Purification par affinité contre l'antigène

Dilutions recommandées:

WB 1:500-1:1000

IP 0.5-4.0 ug for IP and 1:500-1:1000 for WB

IHC 1:20-1:200

IF 1:50-1:500

Applications

Applications testées:

IF, IHC, IP, WB, ELISA

Demandes citées:

IHC, WB

Spécificité de l'espèce:

Humain, rat, souris

Espèces citées:

Humain

Remarque-IHC: il est suggéré de démasquer l'antigène avec un tampon de TE buffer pH 9,0; (*) A défaut, 'le démasquage de l'antigène peut être effectué avec un tampon citrate pH 6,0.

Contrôles positifs:

WB : tissu cardiaque humain, tissu pulmonaire de souris

IP : tissu pulmonaire de souris,

IHC : tissu rénal humain, tissu cardiaque humain

IF : cellules HeLa,

Informations générales

INPP5J (Phosphatidylinositol 4,5-bisphosphate 5-phosphatase A) is also named as PIB5PA, PIPP and belongs to the inositol 1,4,5-trisphosphate 5-phosphatase type II family. INPP5J is a key signalling molecule that regulates dendritic outgrowth through activation of small GTPase signalling via interaction between FRMPD4 and ARHGEF7. It can control the resting membrane potential through a specific ion-channel-receptor-ligand interaction that brings about a large conformational change, analogous to neurotransmitter activation of ion channels at synapses. (PMID:22595022). This protein has 3 isoforms produced by alternative splicing.

Publications notables

Autrice	Pubmed ID	Journal	Application
Tongyu Zhu	26282217	Biomed Pharmacother	WB
Chuyong Lin	25099196	Nat Commun	WB, IHC

Stockage

Stockage:

Stocker à -20°C. Stable pendant un an après l'expédition.

Tampon de stockage:

PBS avec azoture de sodium à 0,02 % et glycérol à 50 % pH 7,3

L'aliquotage n'est pas nécessaire pour le stockage à -20C

*** Les 20ul contiennent 0,1% de BSA.

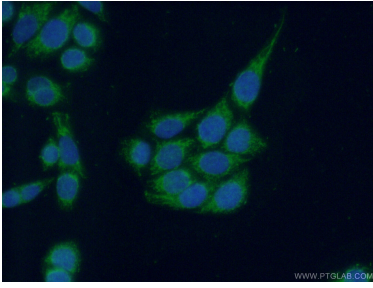
For technical support and original validation data for this product please contact:

T: 1 (888) 4PTGLAB (1-888-478-4522) (toll free in USA), or 1(312) 455-8498 (outside USA)

E: proteintech@ptglab.com
W: ptglab.com

This product is exclusively available under Proteintech Group brand and is not available to purchase from any other manufacturer.

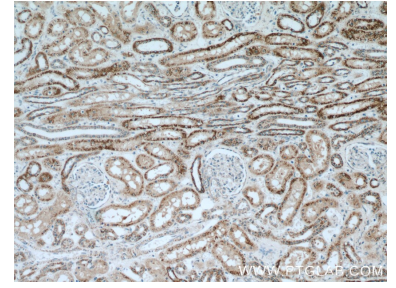
Données de validation sélectionnées



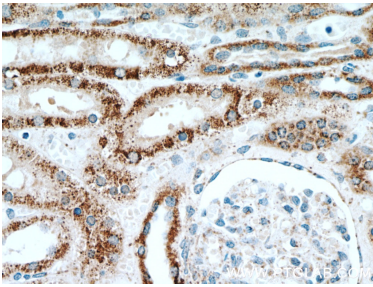
Immunofluorescent analysis of (-20°C Ethanol) fixed HeLa cells using 21417-1-AP (INPP5J antibody) at dilution of 1:50 and Alexa Fluor 488-conjugated AffiniPure Goat Anti-Rabbit IgG(H+L).



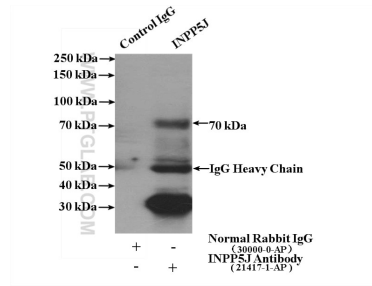
human heart tissue were subjected to SDS PAGE followed by western blot with 21417-1-AP (INPP5J antibody) at dilution of 1:500 incubated at room temperature for 1.5 hours.



Immunohistochemical analysis of paraffin-embedded human kidney using 21417-1-AP (INPP5J antibody) at dilution of 1:50 (under 10x lens).



Immunohistochemical analysis of paraffin-embedded human kidney using 21417-1-AP (INPP5J antibody) at dilution of 1:50 (under 40x lens).



IP Result of anti-INPP5J (IP:21417-1-AP, 4ug; Detection:21417-1-AP 1:500) with mouse lung tissue lysate 4000ug.