

À des fins de recherche uniquement

Anticorps Polyclonal de lapin anti-PRH1



Numéro de catalogue: 21460-1-AP

Informations de base

Numéro de catalogue: 21460-1-AP	Numéro d'acquisition GenBank: BC064553	Méthode de purification: Purification par affinité contre l'antigène
Taille: 150ul , Concentration: 133 µg/ml by Bradford method using BSA as the standard;	Identification du gène (NCBI): 5554	Dilutions recommandées: WB 1:200-1:1000 IF 1:20-1:200
Hôte: Lapin	Nom complet: proline-rich protein HaeIII subfamily 1	
Isotype: IgG	MW calculé: 17 kDa	
Immunogen Catalog Number: AG14833	MW observés: 17 kDa	

Applications

Applications testées: IF, WB, ELISA	Contrôles positifs: WB : cellules HepG2, IF : cellules HepG2,
Spécificité de l'espèce: Humain	

Informations générales

PRH1, also known as Salivary acidic proline-rich phosphoprotein 1/2, is a 166 amino acid secreted protein whose molecular weight is 17 kDa. It functions as a highly potent inhibitor of calcium phosphate crystal growth. Similar to other PRPs, PRH1 provides a protective and reparative environment for dental enamel, which is important for teeth integrity. This antibody specifically recognises the 17 kDa protein.

Stockage

Stockage:
Stocker à -20°C. Stable pendant un an après l'expédition.
Tampon de stockage:
PBS avec azoture de sodium à 0,02 % et glycérol à 50 % pH 7,3
L'aliquotage n'est pas nécessaire pour le stockage à -20C

*** Les 20ul contiennent 0,1% de BSA.

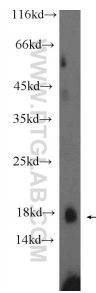
For technical support and original validation data for this product please contact:

T: 1 (888) 4PTGLAB (1-888-478-4522) (toll free in USA), or 1(312) 455-8498 (outside USA)

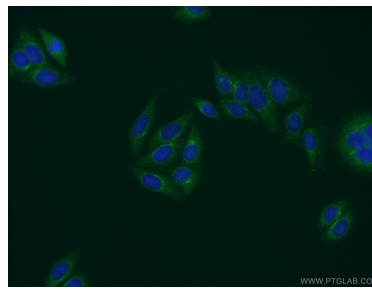
E: proteintech@ptglab.com
W: ptglab.com

This product is exclusively available under Proteintech Group brand and is not available to purchase from any other manufacturer.

Données de validation sélectionnées



HepG2 cells were subjected to SDS PAGE followed by western blot with 21460-1-AP (PRH1 Antibody) at dilution of 1:300 incubated at 4 degree celsius over night.



Immunofluorescent analysis of HepG2 cells using 21460-1-AP (PRH1 antibody) at dilution of 1:50 and Alexa Fluor 488-conjugated AffiniPure Goat Anti-Rabbit IgG(H+L).