

À des fins de recherche uniquement

# Anticorps Polyclonal de lapin anti-NF-H/NF200



Numéro de catalogue: 21471-1-AP

5 Publications

## Informations de base

<b>Numéro de catalogue:</b> 21471-1-AP	<b>Numéro d'acquisition GenBank:</b> BC073969	<b>Méthode de purification:</b> Purification par affinité contre l'antigène
<b>Taille:</b> 150ul, Concentration: 300 µg/ml by Nanodrop and 213 µg/ml by Bradford method using BSA as the standard;	<b>Identification du gène (NCBI):</b> 4744	<b>Dilutions recommandées:</b> WB 1:1000-1:4000 IHC 1:50-1:500
<b>Hôte:</b> Lapin	<b>Nom complet:</b> neurofilament, heavy polypeptide	
<b>Isotype:</b> IgG	<b>MW calculé:</b> 1026 aa, 112 kDa	
<b>Immunogen Catalog Number:</b> AG15249	<b>MW observés:</b> 200 kDa	

## Applications

### Applications testées:

FC, IHC, WB, ELISA

### Demandes citées:

IF, WB

### Spécificité de l'espèce:

Humain, rat, souris

### Espèces citées:

rat, singe, souris

**Remarque-IHC: il est suggéré de démasquer l'antigène avec un tampon de TE buffer pH 9,0; (\*) A défaut, 'le démasquage de l'antigène peut être effectué avec un tampon citrate pH 6,0.**

### Contrôles positifs:

WB : tissu cérébral de souris,

IHC : tissu cérébral humain,

## Informations générales

NEFH, also named as KIAA0845 and NFH, Belongs to the intermediate filament family. It has an important function in mature axons that is not subserved by the two smaller NF proteins. Neurofilaments are the 10nm intermediate filaments found specifically in neurons. They are a major component of the cell's cytoskeleton, and provide support for normal axonal radial growth. Neurofilaments usually contain three intermediate filament proteins: L, M, and H which are involved in the maintenance of neuronal caliber. The names given to the three major neurofilament subunits are based upon the apparent molecular weight of the mammalian subunits on SDS-PAGE: NF-L, 65-68kd; NF-M, 145-160kd and NF-H, 200-220kd. This antibody recognize NEFH only.

## Publications notables

Autrice	Pubmed ID	Journal	Application
Feng Yue	34704001	iScience	IF
Huanliang Liu	31829301	Sci Total Environ	WB
Jeffrey M Gimble	30881803	Plast Reconstr Surg Glob Open	IF

## Stockage

### Stockage:

Stocker à -20°C. Stable pendant un an après l'expédition.

### Tampon de stockage:

PBS avec azoture de sodium à 0,02 % et glycérol à 50 % pH 7,3

L'aliquotage n'est pas nécessaire pour le stockage à -20C

\*\*\* Les 20ul contiennent 0,1% de BSA.

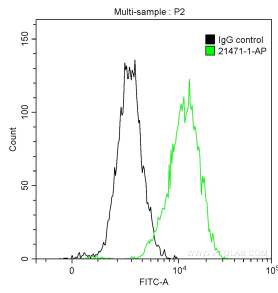
For technical support and original validation data for this product please contact:

T: 1 (888) 4PTGLAB (1-888-478-4522) (toll free in USA), or 1(312) 455-8498 (outside USA)

E: proteintech@ptglab.com  
W: ptglab.com

This product is exclusively available under Proteintech Group brand and is not available to purchase from any other manufacturer.

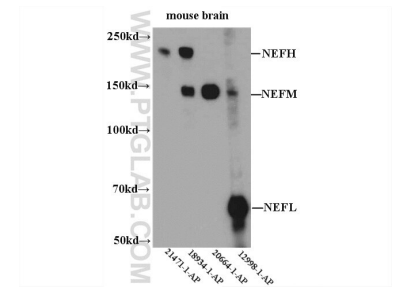
## Données de validation sélectionnées



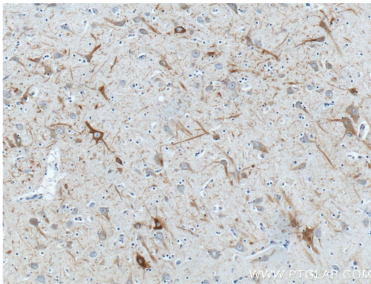
1X10<sup>6</sup> SH-SY5Y cells were intracellularly stained with 0.5 ug Anti-Human NF-H (21471-1-AP) and CoraLite®488-Conjugated AffiniPure Goat Anti-Rabbit IgG(H+L) at dilution 1:1000 (green), and 0.5 ug Control Antibody. Cells were fixed with 90% MeOH.



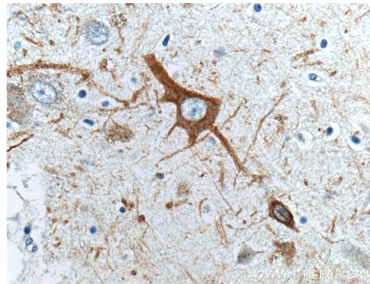
mouse brain tissue were subjected to SDS PAGE followed by western blot with 21471-1-AP (NF-H antibody) at dilution of 1:2000 incubated at room temperature for 1.5 hours.



WB result of 21471-1-AP.



Immunohistochemical analysis of paraffin-embedded human brain tissue slide using 21471-1-AP (NF-H antibody at dilution of 1:200 (under 10x lens).



Immunohistochemical analysis of paraffin-embedded human brain tissue slide using 21471-1-AP (NF-H antibody at dilution of 1:200 (under 40x lens).