

À des fins de recherche uniquement

Anticorps Polyclonal de lapin anti-VANGL2



Numéro de catalogue: 21492-1-AP

Phare

9 Publications

Informations de base

Numéro de catalogue:
21492-1-AP

Taille:
150ul, Concentration: 300 µg/ml by Nanodrop and 233 µg/ml by Bradford method using BSA as the standard;

Hôte:
Lapin

Isotype:
IgG

Immunogen Catalog Number:
AG15833

Numéro d'acquisition GenBank:
BC103920

Identification du gène (NCBI):
57216

Nom complet:
vang-like 2 (van gogh, Drosophila)

MW calculé:
521 aa, 60 kDa

MW observés:
60-70 kDa

Méthode de purification:
Purification par affinité contre l'antigène

Dilutions recommandées:
WB 1:500-1:1000
IP 0.5-4.0 ug for IP and 1:500-1:1000 for WB
IHC 1:50-1:500
IF 1:20-1:200

Applications

Applications testées:
IF, IHC, IP, WB, ELISA

Demandes citées:
CoIP, IF, IP, WB

Spécificité de l'espèce:
Humain, rat, souris

Espèces citées:
Humain, rat, souris

Remarque-IHC: il est suggéré de démasquer l'antigène avec un tampon de TE buffer pH 9,0; (*) A défaut, le démasquage de l'antigène peut être effectué avec un tampon citrate pH 6,0.

Contrôles positifs:

WB : cellules HepG2, cellules NIH/3T3, tissu cérébral de rat, tissu cérébral de souris

IP : cellules HepG2,

IHC : tissu d'estomac humain,

IF : cellules HepG2,

Informations générales

Vangl2 is a key component of the planar cell polarity (PCP) pathway. Vangl2 is tightly associated with the postsynaptic density (PSD) fraction and forms a protein complex with PSD-95 and NMDA receptors. Vangl2 directly binds to the third PDZ domain of PSD-95 via its C-terminal TSV motif. Vangl2 directly binds to N-cadherin.

Publications notables

Autrice	Pubmed ID	Journal	Application
Xiao Han	36054333	Hum Mutat	WB
Tammy N Jessen	29097183	Exp Cell Res	CoIP
Xin Sheng	34738156	Cell Tissue Res	WB,IF,IP

Stockage

Stockage:

Stocker à -20°C. Stable pendant un an après l'expédition.

Tampon de stockage:

PBS avec azoture de sodium à 0,02 % et glycérol à 50 % pH 7,3

L'aliquotage n'est pas nécessaire pour le stockage à -20C

*** Les 20ul contiennent 0,1% de BSA.

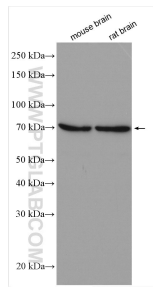
For technical support and original validation data for this product please contact:

T: 1 (888) 4PTGLAB (1-888-478-4522) (toll free in USA), or 1(312) 455-8498 (outside USA)

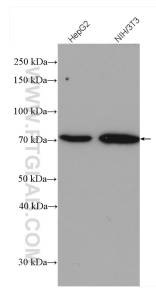
E: proteintech@ptglab.com
W: ptglab.com

This product is exclusively available under Proteintech Group brand and is not available to purchase from any other manufacturer.

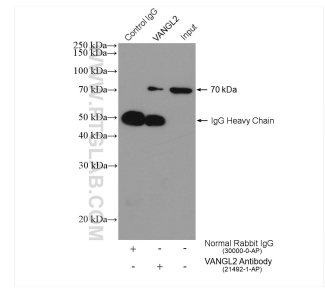
Données de validation sélectionnées



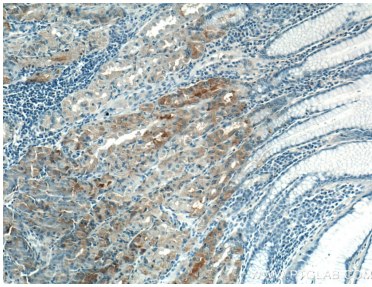
Various lysates were subjected to SDS PAGE followed by western blot with 21492-1-AP (VANGL2 antibody) at dilution of 1:600 incubated at room temperature for 1.5 hours.



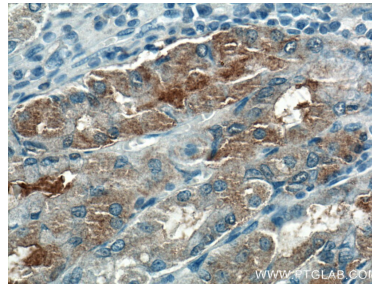
Various lysates were subjected to SDS PAGE followed by western blot with 21492-1-AP (VANGL2 antibody) at dilution of 1:800 incubated at room temperature for 1.5 hours.



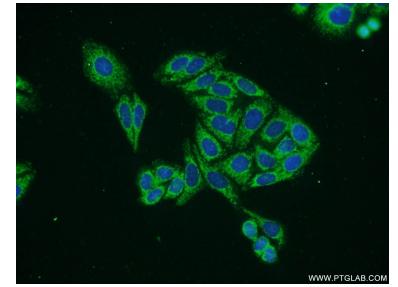
IP result of anti-VANGL2(IP:21492-1-AP, 4ug; Detection:21492-1-AP 1:500) with HepG2 cells lysate 1880 ug.



Immunohistochemical analysis of paraffin-embedded human stomach tissue slide using 21492-1-AP (VANGL2 antibody) at dilution of 1:200 (under 10x lens).



Immunohistochemical analysis of paraffin-embedded human stomach tissue slide using 21492-1-AP (VANGL2 antibody) at dilution of 1:200 (under 40x lens).



Immunofluorescent analysis of HepG2 cells using 21492-1-AP (VANGL2 antibody) at dilution of 1:50 and Alexa Fluor 488-conjugated AffiniPure Goat Anti-Rabbit IgG(H+L).