

À des fins de recherche uniquement

Anticorps Polyclonal de lapin anti-C1orf106



Numéro de catalogue: 21506-1-AP

Informations de base

| | | |
|---|--|---|
| Numéro de catalogue: 21506-1-AP | Numéro d'acquisition GenBank: BC106877 | Méthode de purification: Purification par affinité contre l'antigène |
| Taille: 150ul, Concentration: 150 µg/ml by Nanodrop and 133 µg/ml by Bradford method using BSA as the standard; | Identification du gène (NCBI): 55765 | Dilutions recommandées: WB 1:500-1:2000 IP 0.5-4.0 ug for IP and 1:500-1:1000 for WB |
| Hôte: Lapin | Nom complet: chromosome 1 open reading frame 106 | IHC 1:50-1:500 IF 1:10-1:100 |
| Isotype: IgG | MW calculé: 663 aa, 73 kDa | |
| Immunogen Catalog Number: AG15987 | MW observés: 70-73 kDa | |

Applications

| | |
|--|--|
| Applications testées: IF, IHC, IP, WB, ELISA | Contrôles positifs: WB : tissu rénal de souris, cellules HEK-293, tissu rénal de rat |
| Spécificité de l'espèce: Humain, rat, souris | IP : tissu rénal de souris, |
| Remarque-IHC: il est suggéré de démasquer l'antigène avec un tampon de TE buffer pH 9,0; (*) À défaut, 'le démasquage de l'antigène peut être effectué avec un tampon citrate pH 6,0. | IHC : tissu rénal de souris, |
| | IF : cellules HEK-293, cellules HeLa |

Informations générales

C1orf106 (also known as innate immunity activator, INAVA) has thus far been considered to play a significant role in intestinal inflammatory diseases. C1orf106 is highly expressed in the human intestine and intestinal epithelial cell lines but expressed at low levels in myeloid cells and mouse bone marrow-derived macrophages (PMID: 29420262). Recent studies have also shown that C1orf106 protects against colitis by stabilizing E-cadherin and bridges mucosal barrier function with inflammatory signaling (PMID: 31376015).

Stockage

Stockage:
Stocker à -20°C. Stable pendant un an après l'expédition.
Tampon de stockage:
PBS avec azoture de sodium à 0,02 % et glycérol à 50 % pH 7,3
L'aliquotage n'est pas nécessaire pour le stockage à -20C

*** Les 20ul contiennent 0,1% de BSA.

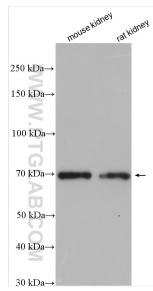
For technical support and original validation data for this product please contact:

T: 1 (888) 4PTGLAB (1-888-478-4522) (toll free in USA), or 1(312) 455-8498 (outside USA)

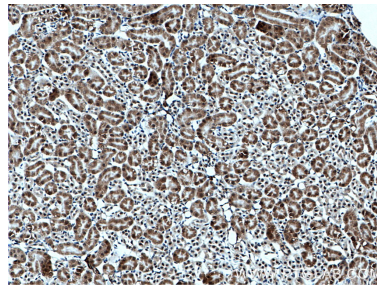
E: proteintech@ptglab.com
W: ptglab.com

This product is exclusively available under Proteintech Group brand and is not available to purchase from any other manufacturer.

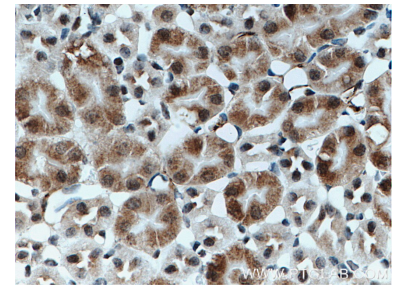
Données de validation sélectionnées



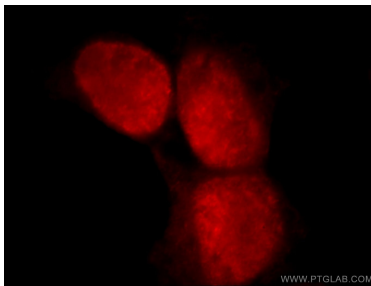
Various lysates were subjected to SDS PAGE followed by western blot with 21506-1-AP (C1orf106 antibody) at dilution of 1:1000 incubated at room temperature for 1.5 hours.



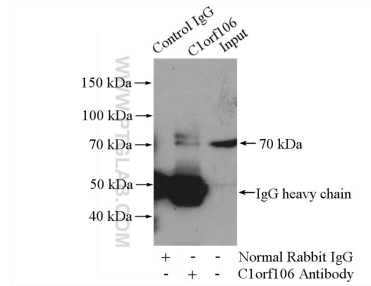
Immunohistochemical analysis of paraffin-embedded mouse kidney tissue slide using 21506-1-AP (C1orf106 antibody) at dilution of 1:200 (under 10x lens. Heat mediated antigen retrieval with Tris-EDTA buffer (pH 9.0).



Immunohistochemical analysis of paraffin-embedded mouse kidney tissue slide using 21506-1-AP (C1orf106 antibody) at dilution of 1:200 (under 40x lens. Heat mediated antigen retrieval with Tris-EDTA buffer (pH 9.0).



Immunofluorescent analysis of HEK-293 cells, using C1orf106 antibody 21506-1-AP at 1:25 dilution and Rhodamine-labeled goat anti-rabbit IgG (red).



IP Result of anti-C1orf106 (IP:21506-1-AP, 4ug; Detection:21506-1-AP 1:500) with mouse kidney tissue lysate 4800ug.