

À des fins de recherche uniquement

Anticorps Polyclonal de lapin anti-GPR50



Numéro de catalogue: 21514-1-AP

Informations de base

Numéro de catalogue:

21514-1-AP

Taille:

150ul, Concentration: 700 µg/ml by Nanodrop;

Hôte:

Lapin

Isotype:

IgG

Immunogen Catalog Number:

AG16040

Numéro d'acquisition GenBank:

BC103696

Identification du gène (NCBI):

9248

Nom complet:

G protein-coupled receptor 50

MW calculé

617 aa, 67 kDa

MW observés:

67 kDa

Méthode de purification:

Purification par affinité contre l'antigène

Dilutions recommandées:

WB 1:1000-1:8000

IP 0.5-4.0 ug for IP and 1:500-1:1000 for WB

IF 1:20-1:200

Applications

Applications testées:

FC, IF, IP, WB, ELISA

Spécificité de l'espèce:

Humain, souris

Contrôles positifs:

WB : cellules HEK-293, cellules HeLa

IP : cellules HeLa,

IF : cellules SH-SY5Y, tissu d'hippocampe de souris

Informations générales

Stockage

Stockage:

Stocker à -20°C. Stable pendant un an après l'expédition.

Tampon de stockage:

PBS avec azoture de sodium à 0,02 % et glycérol à 50 % pH 7,3

L'aliquotage n'est pas nécessaire pour le stockage à -20C

***** Les 20ul contiennent 0,1% de BSA.**

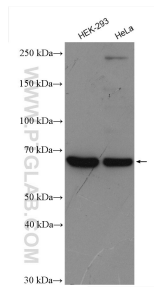
For technical support and original validation data for this product please contact:

T: 1 (888) 4PTGLAB (1-888-478-4522) (toll free in USA), or 1(312) 455-8498 (outside USA)

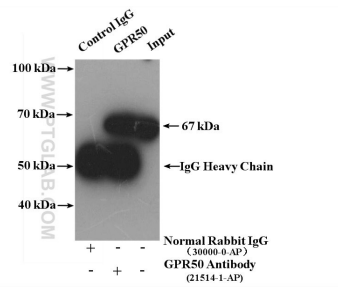
E: proteintech@ptglab.com
W: ptglab.com

This product is exclusively available under Proteintech Group brand and is not available to purchase from any other manufacturer.

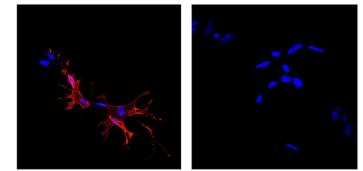
Données de validation sélectionnées



Various lysates were subjected to SDS PAGE followed by western blot with 21514-1-AP (GPR50 antibody) at dilution of 1:4000 incubated at room temperature for 1.5 hours.



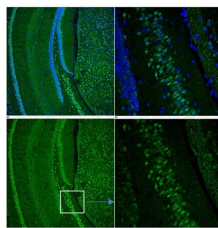
HeLa cells were subjected to SDS PAGE followed by western blot with 21514-1-AP (GPR50 antibody) at dilution of 1:500.



1:1000 No primary antibody control

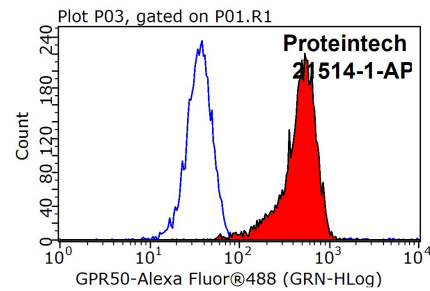
Sample: SH-SY5Y cells, GPR50 transfected optimal dilution: 1 in 1000

IF result of GPR50 antibody (21514-1-AP, 1:1,000) with SH-SY5Y cells transfected with GPR50 by Dr. Qian Li, University of Edinburgh.



Hippocampus, CS7 BL/6 mouse, adult Optimal dilution: 1 in 50

IF result of GPR50 antibody (21514-1-AP, 1:50) with mouse hippocampus by Dr. Qian Li, University of Edinburgh.



1X10⁶ K-562 cells were stained with 0.2ug GPR50 antibody (21514-1-AP, red) and control antibody (blue). Fixed with 90% MeOH blocked with 3% BSA (30 min). Alexa Fluor 488-conjugated AffiniPure Goat Anti-Rabbit IgG(H+L) with dilution 1:1000.