

À des fins de recherche uniquement

# Anticorps Polyclonal de lapin anti-LHX6



Numéro de catalogue: 21516-1-AP

Phare

2 Publications

## Informations de base

Numéro de catalogue:

21516-1-AP

Numéro d'acquisition GenBank:

BC103937

Méthode de purification:

Purification par affinité contre l'antigène

Taille:

150ul, Concentration: 227 µg/ml by Bradford method using BSA as the standard;

Identification du gène (NCBI):

26468

Dilutions recommandées:

WB 1:200-1:1000

Hôte:

Lapin

Nom complet:

LIM homeobox 6

MW calculé

392 aa, 43 kDa

Isotype:

IgG

MW observés:

50-60 kDa

Immunogen Catalog Number:

AG16047

## Applications

Applications testées:

WB, ELISA

Contrôles positifs:

WB: cellules HepG2,

Demandes citées:

WB

Spécificité de l'espèce:

Humain

Espèces citées:

Humain

## Informations générales

LHX6 is a LIM homeodomain protein similar in structure to ISL-1. LHX6, like ISL-1, contains tandem LIM domains and a homeodomain that regulate its activity both in cis and through interaction with cell-specific factors. LHX6 is highly expressed in the neural crest-derived mesenchyme throughout odontogenesis and down-regulated after birth. However, LHX6 is also expressed in the palate epithelium, oral epithelium, and dental epithelium during craniofacial development. LHX6 regulates migration and specification of neuron subtypes and marks specific neurons. The molecular weight of Endogenous LHX6 is 40 kDa, but the LHX6PITX2 protein complex is 56 kDa (PMID: 23229549).

## Publications notables

Autrice	Pubmed ID	Journal	Application
You Yu	31562861	Exp Cell Res	WB
Shuang Shi	34729246	Mol Ther Nucleic Acids	WB

## Stockage

Stockage:

Stocker à -20°C. Stable pendant un an après l'expédition.

Tampon de stockage:

PBS avec azoture de sodium à 0,02 % et glycérol à 50 % pH 7,3

L'aliquotage n'est pas nécessaire pour le stockage à -20C

\*\*\* Les 20ul contiennent 0,1% de BSA.

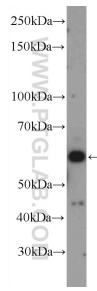
For technical support and original validation data for this product please contact:

T: 1 (888) 4PTGLAB (1-888-478-4522) (toll free in USA), or 1(312) 455-8498 (outside USA)

E: [proteintech@ptglab.com](mailto:proteintech@ptglab.com)  
W: [ptglab.com](http://ptglab.com)

This product is exclusively available under Proteintech Group brand and is not available to purchase from any other manufacturer.

## Données de validation sélectionnées



HepG2 cells were subjected to SDS PAGE followed by western blot with 21516-1-AP (LHX6 Antibody) at dilution of 1:300 incubated at room temperature for 1.5 hours.