

À des fins de recherche uniquement

Anticorps Polyclonal de lapin anti-ZEB1



Numéro de catalogue: 21544-1-AP

Phare

189 Publications

Informations de base

Numéro de catalogue:

21544-1-AP

Taille:

150ul, Concentration: 700 µg/ml by Nanodrop;

Hôte:

Lapin

Isotype:

IgG

Immunogen Catalog Number:

AG16204

Numéro d'acquisition GenBank:

BC112392

Identification du gène (NCBI):

6935

Nom complet:

zinc finger E-box binding homeobox 1

MW calculé

1125 aa, 124 kDa

MW observés:

190-210 kDa

Méthode de purification:

Purification par affinité contre l'antigène

Dilutions recommandées:

WB 1:500-1:2000

IP 0.5-4.0 µg for IP and 1:2000-1:16000 for WB

Applications

Applications testées:

IP, WB, ELISA

Demandes citées:

ChIP, CoIP, IF, IHC, IP, WB

Spécificité de l'espèce:

Humain, souris

Espèces citées:

Humain, porc, rat, souris

Contrôles positifs:

WB : cellules Jurkat, cellules COLO 320, cellules MCF-7, cellules MDA-MB-453s, cellules PC-3, tissu de côlon de souris

IP : cellules COLO 320,

Informations générales

ZEB1(zinc-finger-enhancer binding protein 1), which is a members of the Zincfinger-Homeobox (ZFH)-family of repressors, acts as a transcriptional repressor that inhibits interleukin-2 (IL-2) gene expression. Depending on the quantity of cDNA and on the cell type, ZEB1 can enhance or repress the promoter activity of the ATP1A1 gene . Represses E-cadherin promoter and induces an epithelial-mesenchymal transition (EMT) by recruiting SMARCA4/BRG1. Represses BCL6 transcription in the presence of the corepressor CTBP1. Positively regulates neuronal differentiation. The calculated molecular weight of ZEB1 is 124 kDa, but the post phosphorylation of protein is about 190-210 kDa. This is a rabbit polyclonal antibody raised against part of the full length of ZEB1 of human.

Publications notables

Autrice	Pubmed ID	Journal	Application
Caixia Yu	36181978	Virus Res	WB
Chenlong Li	31558707	Cell Death Dis	WB
Duo Shi	34555439	Virus Res	WB

Stockage

Stockage:

Stocker à -20°C. Stable pendant un an après l'expédition.

Tampon de stockage:

PBS avec azoture de sodium à 0,02 % et glycérol à 50 % pH 7,3

L'aliquotage n'est pas nécessaire pour le stockage à -20C

*** Les 20ul contiennent 0,1% de BSA.

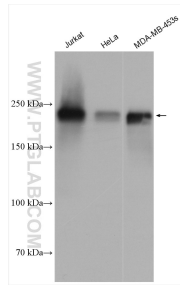
For technical support and original validation data for this product please contact:

T: 1 (888) 4PTGLAB (1-888-478-4522) (toll free in USA), or 1(312) 455-8498 (outside USA)

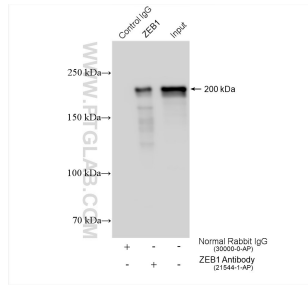
E: proteintech@ptglab.com
W: ptglab.com

This product is exclusively available under Proteintech Group brand and is not available to purchase from any other manufacturer.

Données de validation sélectionnées



Various lysates were subjected to SDS PAGE followed by western blot with 21544-1-AP (ZEB1 antibody) at dilution of 1:1000 incubated at room temperature for 1.5 hours.



IP result of anti-ZEB1(IP:21544-1-AP, 4ug; Detection:21544-1-AP 1:8000) with COLO 320 cells lysate 1320 ug.