

À des fins de recherche uniquement

# Anticorps Polyclonal de lapin anti-MARK1



Numéro de catalogue: 21552-1-AP

Phare

9 Publications

## Informations de base

Numéro de catalogue:  
21552-1-AP

Taille:  
150ul, Concentration: 360 µg/ml by  
Bradford method using BSA as the  
standard;

Hôte:  
Lapin

Isotype:  
IgG

Immunogen Catalog Number:  
AG16225

Numéro d'acquisition GenBank:  
BC113869

Identification du gène (NCBI):  
4139

Nom complet:  
MAP/microtubule affinity-regulating  
kinase 1

MW calculé  
795 aa, 89 kDa

MW observés:  
85-89 kDa, 72 kDa

Méthode de purification:  
Purification par affinité contre  
l'antigène

Dilutions recommandées:  
WB 1:1000-1:6000  
IP 0.5-4.0 ug for IP and 1:500-1:2000  
for WB  
IHC 1:50-1:500

## Applications

Applications testées:  
IHC, IP, WB, ELISA

Demandes citées:  
IP, WB

Spécificité de l'espèce:  
Humain, rat, souris

Espèces citées:  
Humain, rat, souris

**Remarque-IHC: il est suggéré de démasquer  
l'antigène avec un tampon de TE buffer pH  
9.0; (\*) A défaut, 'le démasquage de  
l'antigène peut être 'effectué avec un  
tampon citrate pH 6,0.**

Contrôles positifs:

WB : tissu cérébral de souris, cellules HeLa, cellules  
SH-SY5Y, tissu cérébral de rat, tissu rénal de souris

IP : tissu cérébral de souris,

IHC : tissu testiculaire de rat,

## Informations générales

MARK1, also named as MAP-microtubule affinity regulating kinase 1, which form a subfamily of the calcium/calmodulin-dependent protein kinase (CAMP) group of kinases (PMID: 22670221). It is involved in cell polarity by phosphorylating the microtubule-associated proteins MAP2, MAP4 and MAPT/TAU at KXGS motifs, causing detachment from microtubules, and their disassembly. MARK1 also act as a regulator of the neuronal migration and Wnt signaling pathway. It has 3 isoforms which molecular weight is 89,84,72 kDa. This antibody may detect all of the isoforms.

## Publications notables

Autrice	Pubmed ID	Journal	Application
Tsz-Yin Chan	34504101	Nat Commun	IP
Vickie Kwan	27829159	Cell Rep	WB
Victoria L DiBona	34023358	Neurosci Res	WB

## Stockage

Stockage:

Stocker à -20°C. Stable pendant un an après l'expédition.

Tampon de stockage:

PBS avec azoture de sodium à 0,02 % et glycérol à 50 % pH 7,3

L'aliquotage n'est pas nécessaire pour le stockage à -20C

\*\*\* Les 20ul contiennent 0,1% de BSA.

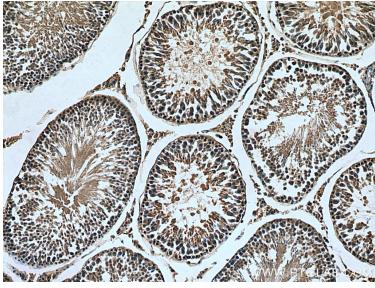
For technical support and original validation data for this product please contact:

T: 1 (888) 4PTGLAB (1-888-478-4522) (toll free  
in USA), or 1(312) 455-8498 (outside USA)

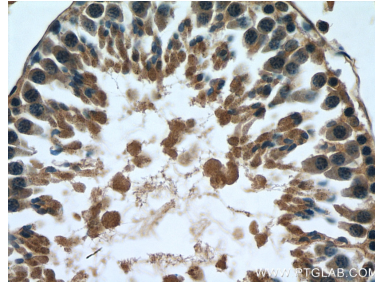
E: proteintech@ptglab.com  
W: ptglab.com

This product is exclusively available under Proteintech Group brand and is not available to purchase from any other manufacturer.

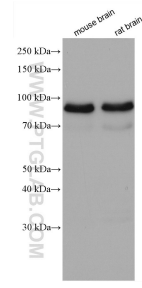
## Données de validation sélectionnées



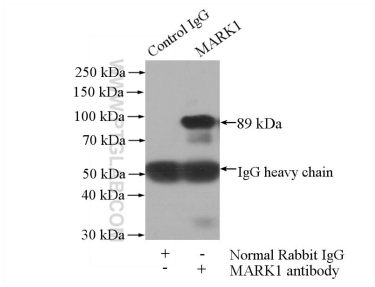
Immunohistochemical analysis of paraffin-embedded rat testis tissue slide using 21552-1-AP (MARK1 antibody) at dilution of 1:200 (under 10x lens). Heat mediated antigen retrieval with Tris-EDTA buffer (pH 9.0).



Immunohistochemical analysis of paraffin-embedded rat testis tissue slide using 21552-1-AP (MARK1 antibody) at dilution of 1:200 (under 40x lens). Heat mediated antigen retrieval with Tris-EDTA buffer (pH 9.0).



Various lysates were subjected to SDS PAGE followed by western blot with 21552-1-AP (MARK1 antibody) at dilution of 1:3000 incubated at room temperature for 1.5 hours.



IP Result of anti-MARK1 (IP:21552-1-AP, 4ug; Detection:21552-1-AP 1:1000) with mouse brain tissue lysate 3440ug.