

À des fins de recherche uniquement

Anticorps Polyclonal de lapin anti-RHOG



Numéro de catalogue: 21576-1-AP

Informations de base

| | | |
|--|--|--|
| Numéro de catalogue: 21576-1-AP | Numéro d'acquisition GenBank: BC104178 | Méthode de purification: Purification par affinité contre l'antigène |
| Taille: 150ul, Concentration: 260 µg/ml by Nanodrop; | Identification du gène (NCBI): 391 | Dilutions recommandées: WB 1:500-1:1000 |
| Hôte: Lapin | Nom complet: ras homolog gene family, member G (rho G) | |
| Isotype: IgG | MW calculé: 191 aa, 21 kDa | |
| Immunogen Catalog Number: AG16118 | MW observés: 21 kDa | |

Applications

| | |
|---|---|
| Applications testées: WB, ELISA | Contrôles positifs: WB : cellules Jurkat, cellules HeLa, cellules K-562, cellules MCF-7 |
| Spécificité de l'espèce: Humain | |

Informations générales

RHOG, also named as ARHG, belongs to the small GTPase superfamily and Rho family. It is required for the formation of membrane ruffles during macropinocytosis. And it is required for the formation of cup-like structures during trans-endothelial migration of leukocytes. In case of Salmonella enterica infection, it is activated by SopB and SGEF, which induces cytoskeleton rearrangements and promotes bacterial entry. This antibody is specific to RHOG.

Stockage

Stockage:
Stocker à -20°C. Stable pendant un an après l'expédition.
Tampon de stockage:
PBS avec azoture de sodium à 0,02 % et glycérol à 50 % pH 7,3
L'aliquotage n'est pas nécessaire pour le stockage à -20C

***** Les 20ul contiennent 0,1% de BSA.**

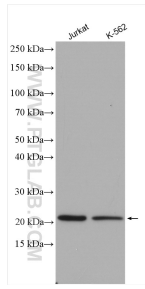
For technical support and original validation data for this product please contact:

T: 1 (888) 4PTGLAB (1-888-478-4522) (toll free in USA), or 1(312) 455-8498 (outside USA)

E: proteintech@ptglab.com
W: ptglab.com

This product is exclusively available under Proteintech Group brand and is not available to purchase from any other manufacturer.

Données de validation sélectionnées



Various lysates were subjected to SDS PAGE followed by western blot with 21576-1-AP (RHOG antibody) at dilution of 1:600 incubated at room temperature for 1.5 hours.