

À des fins de recherche uniquement

Anticorps Polyclonal de lapin anti-CYP24A1



Numéro de catalogue: 21582-1-AP

Phare

13 Publications

Informations de base

Numéro de catalogue:
21582-1-AP

Taille:
150ul, Concentration: 500 µg/ml by Nanodrop and 400 µg/ml by Bradford method using BSA as the standard;

Hôte:
Lapin

Isotype:
IgG

Immunogen Catalog Number:
AG16134

Numéro d'acquisition GenBank:
BC109083

Identification du gène (NCBI):
1591

Nom complet:
cytochrome P450, family 24, subfamily A, polypeptide 1

MW calculé:
514 aa, 59 kDa

MW observés:
54-59 kDa

Méthode de purification:
Purification par affinité contre l'antigène

Dilutions recommandées:
WB 1:500-1:1000
IP 0.5-4.0 ug for IP and 1:200-1:1000 for WB
IHC 1:20-1:200

Applications

Applications testées:
IHC, IP, WB, ELISA

Demandes citées:
IHC, WB

Spécificité de l'espèce:
Humain, rat, souris

Espèces citées:
Humain, souris

Remarque-IHC: il est suggéré de démasquer l'antigène avec un tampon de TE buffer pH 9,0; (*) À défaut, 'le démasquage de l'antigène peut être effectué avec un tampon citrate pH 6,0.

Contrôles positifs:

WB : cellules A549, cellules HeLa

IP : cellules HeLa,

IHC : tissu rénal humain, tissu de cancer de la prostate humaine

Informations générales

CYP24A1(1,25-dihydroxyvitamin D(3) 24-hydroxylase, mitochondrial) catalyzes the NADPH-dependent 24-hydroxylation of calcidiol (25-hydroxyvitamin D3) and 1-alpha,25-dihydroxyvitamin D3. Cholecalciferol is metabolised by the 25-hydroxylases (CYP2R1 and CYP27A1) in the liver, before 25-hydroxycholecalciferol (25(OH)D3) relocates to the circulation (PMID:20362668). The gene CYP24A1 has three isoforms, for the transit peptide "mitochondrial domain" removed, the MW of CYP24A1 will be 55-59 kDa, 47-51 kDa and 43 kDa. This antibody is specific to CYP24A1.

Publications notables

Autrice	Pubmed ID	Journal	Application
Thomas Knöpfel	28887454	Sci Rep	WB
Arezo Daryadel	31628396	Sci Rep	WB
Xue-Qi Chen	36255661	Curr Med Sci	WB

Stockage

Stockage:

Stocker à -20°C. Stable pendant un an après l'expédition.

Tampon de stockage:

PBS avec azoture de sodium à 0,02 % et glycérol à 50 % pH 7,3

L'aliquotage n'est pas nécessaire pour le stockage à -20C

*** Les 20ul contiennent 0,1% de BSA.

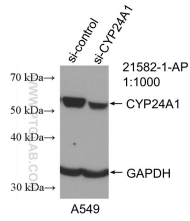
For technical support and original validation data for this product please contact:

T: 1 (888) 4PTGLAB (1-888-478-4522) (toll free in USA), or 1(312) 455-8498 (outside USA)

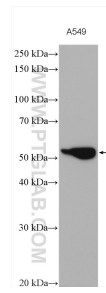
E: proteintech@ptglab.com
W: ptglab.com

This product is exclusively available under Proteintech Group brand and is not available to purchase from any other manufacturer.

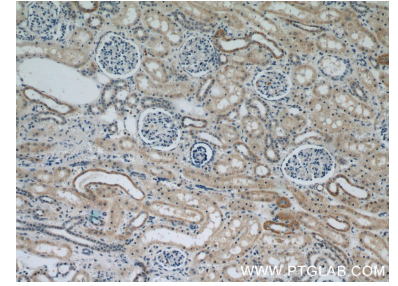
Données de validation sélectionnées



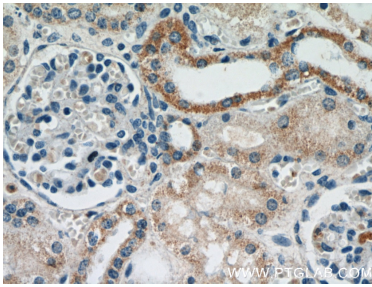
WB result of CYP24A1 antibody (21582-1-AP; 1:1000; incubated at room temperature for 1.5 hours) with sh-Control and sh-CYP24A1 transfected A549 cells.



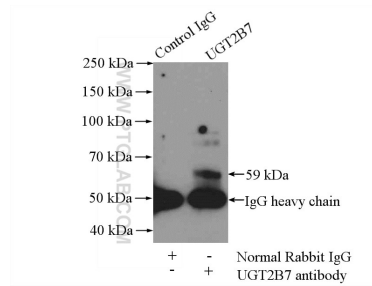
A549 cells were subjected to SDS PAGE followed by western blot with 21582-1-AP (CYP24A1 antibody) at dilution of 1:800 incubated at room temperature for 1.5 hours.



Immunohistochemical analysis of paraffin-embedded human kidney using 21582-1-AP (CYP24A1 antibody) at dilution of 1:50 (under 10x lens).



Immunohistochemical analysis of paraffin-embedded human kidney using 21582-1-AP (CYP24A1 antibody) at dilution of 1:50 (under 40x lens).



IP Result of anti-CYP24A1 (IP:21582-1-AP, 4ug; Detection:21582-1-AP 1:300) with HeLa cells lysate 2800ug.