

À des fins de recherche uniquement

Anticorps Polyclonal de lapin anti-C7orf10



Numéro de catalogue: 21589-1-AP

2 Publications

Informations de base

Numéro de catalogue: 21589-1-AP	Numéro d'acquisition GenBank: BC098318	Méthode de purification: Purification par affinité contre l'antigène
Taille: 150ul, Concentration: 350 µg/ml by Nanodrop and 173 µg/ml by Bradford method using BSA as the standard;	Identification du gène (NCBI): 79783	Dilutions recommandées: WB 1:1000-1:4000 IHC 1:20-1:200
Hôte: Lapin	Nom complet: chromosome 7 open reading frame 10	
Isotype: IgG	MW calculé 471 aa, 51 kDa	
Immunogen Catalog Number: AG16159	MW observés: 48-55 kDa	

Applications

Applications testées:

IHC, WB, ELISA

Demandes citées:

WB

Spécificité de l'espèce:

Humain, rat, souris

Espèces citées:

Humain, souris

Remarque-IHC: il est suggéré de démasquer l'antigène avec un tampon de TE buffer pH 9,0; (*) A défaut, 'le démasquage de l'antigène peut être 'effectué avec un tampon citrate pH 6,0.

Contrôles positifs:

WB : tissu rénal de souris, cellules HEK-293, cellules HepG2, tissu de muscle squelettique de souris, tissu pancréatique de souris, tissu rénal de rat

IHC : tissu rénal humain, tissu pancréatique humain

Informations générales

C7orf10 is also named as SUGCT, DERP13 and belongs to the CaiB/BaiF CoA-transferase family. It may function as part of a multiunit enzyme complex (A), similar to the alpha-ketoglutarate dehydrogenase system, or as the second of two independent enzymes, the first of which decarboxylates alpha-ketoadipate to glutarate (B). This protein has 4 isoforms produced by alternative splicing with the molecular weight from 43 kDa to 51 kDa.

Publications notables

Autrice	Pubmed ID	Journal	Application
Joanna Niska-Blakie	31722069	Cell Mol Life Sci	WB
Scott P Allen	37251807	Front Aging Neurosci	WB

Stockage

Stockage:

Stocker à -20°C. Stable pendant un an après l'expédition.

Tampon de stockage:

PBS avec azoture de sodium à 0,02 % et glycérol à 50 % pH 7,3

L'aliquotage n'est pas nécessaire pour le stockage à -20C

*** Les 20ul contiennent 0,1% de BSA.

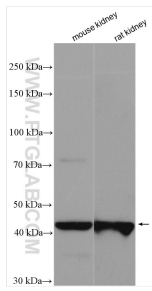
For technical support and original validation data for this product please contact:

T: 1 (888) 4PTGLAB (1-888-478-4522) (toll free in USA), or 1(312) 455-8498 (outside USA)

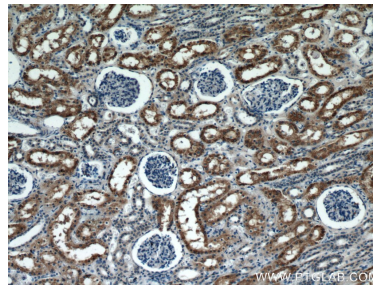
E: proteintech@ptglab.com
W: ptglab.com

This product is exclusively available under Proteintech Group brand and is not available to purchase from any other manufacturer.

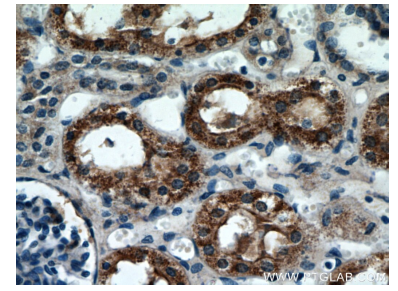
Données de validation sélectionnées



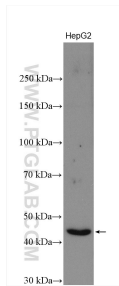
Various lysates were subjected to SDS PAGE followed by western blot with 21589-1-AP (C7orf10 antibody) at dilution of 1:2000 incubated at room temperature for 1.5 hours.



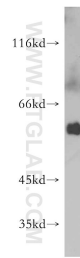
Immunohistochemical analysis of paraffin-embedded human kidney using 21589-1-AP (C7orf10 antibody) at dilution of 1:50 (under 10x lens).



Immunohistochemical analysis of paraffin-embedded human kidney using 21589-1-AP (C7orf10 antibody) at dilution of 1:50 (under 40x lens).



HepG2 cells were subjected to SDS PAGE followed by western blot with 21589-1-AP (C7orf10 antibody) at dilution of 1:1000 incubated at room temperature for 1.5 hours.



mouse skeletal muscle tissue were subjected to SDS PAGE followed by western blot with 21589-1-AP (C7orf10 antibody) at dilution of 1:500 incubated at room temperature for 1.5 hours.