

À des fins de recherche uniquement

# Anticorps Polyclonal de lapin anti-NRCAM



Numéro de catalogue: 21608-1-AP

Phare

5 Publications

## Informations de base

Numéro de catalogue:

21608-1-AP

Taille:

150ul, Concentration: 300 µg/ml by Nanodrop and 233 µg/ml by Bradford method using BSA as the standard;

Hôte:

Lapin

Isotype:

IgG

Immunogen Catalog Number:

AG16237

Numéro d'acquisition GenBank:

BC098401

Identification du gène (NCBI):

4897

Nom complet:

neuronal cell adhesion molecule

MW calculé

1304 aa, 144 kDa

MW observés:

130-136 kDa

Méthode de purification:

Purification par affinité contre l'antigène

Dilutions recommandées:

WB 1:500-1:2000

IHC 1:20-1:200

IF 1:50-1:500

## Applications

Applications testées:

IF, IHC, WB, ELISA

Demandes citées:

IF, IHC, WB

Spécificité de l'espèce:

Humain, rat, souris

Espèces citées:

Humain, souris

**Remarque-IHC: il est suggéré de démasquer l'antigène avec un tampon de TE buffer pH 9,0; (\*) À défaut, 'le démasquage de l'antigène peut être 'effectué avec un tampon citrate pH 6,0.**

Contrôles positifs:

WB : tissu cérébral de souris, cellules HEK-293, tissu cérébral de rat, tissu cérébral humain

IHC : tissu cérébral humain,

IF : cellules HEK-293,

## Informations générales

Neuronal cell adhesion molecule (NRCAM) is a member of the L1 subfamily of cell adhesion molecules (CAMs) that belong to the immunoglobulin superfamily (PMID: 11329126). NRCAM is a transmembrane protein composed of six Ig-like domains and five fibronectin type-III repeats in the extracellular region, with a highly conserved cytoplasmic tail. It is mainly expressed in the nervous system and is involved in neuron-neuron adhesion and promotes directional signaling during axonal cone growth. NRCAM is also expressed outside the nervous system. Altered expression of NRCAM has been associated with tumor progression in diverse organs (PMID: 22182708).

## Publications notables

Autrice	Pubmed ID	Journal	Application
Zhen-Huang Chen	32918999	Mol Cell Neurosci	IHC
Michela Lupia	29551673	Stem Cell Reports	IF
Hongwei Jin	34150622	Front Oncol	WB

## Stockage

Stockage:

Stocker à -20°C. Stable pendant un an après l'expédition.

Tampon de stockage:

PBS avec azoture de sodium à 0,02 % et glycérol à 50 % pH 7,3

L'aliquotage n'est pas nécessaire pour le stockage à -20C

\*\*\* Les 20ul contiennent 0,1% de BSA.

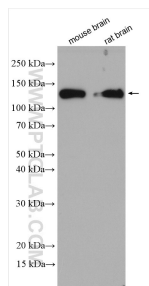
For technical support and original validation data for this product please contact:

T: 1 (888) 4PTGLAB (1-888-478-4522) (toll free in USA), or 1(312) 455-8498 (outside USA)

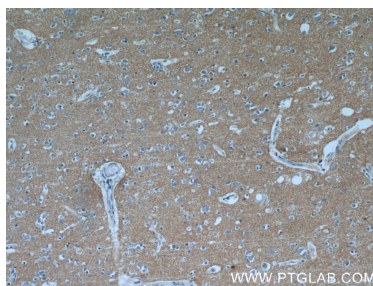
E: proteintech@ptglab.com  
W: ptglab.com

This product is exclusively available under Proteintech Group brand and is not available to purchase from any other manufacturer.

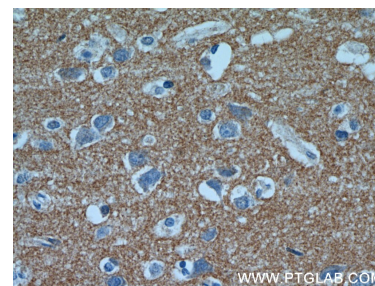
## Données de validation sélectionnées



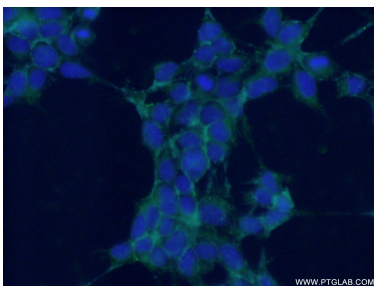
Various lysates were subjected to SDS PAGE followed by western blot with 21608-1-AP (NRCAM antibody) at dilution of 1:1000 incubated at room temperature for 1.5 hours.



Immunohistochemical analysis of paraffin-embedded human brain using 21608-1-AP (NRCAM antibody) at dilution of 1:50 (under 10x lens).



Immunohistochemical analysis of paraffin-embedded human brain using 21608-1-AP (NRCAM antibody) at dilution of 1:50 (under 40x lens).



Immunofluorescent analysis of (-20°C Ethanol) fixed HEK-293 cells using 21608-1-AP (NRCAM antibody) at dilution of 1:50 and Alexa Fluor 488-conjugated AffiniPure Goat Anti-Rabbit IgG(H+L).