

À des fins de recherche uniquement

Anticorps Polyclonal de lapin anti-SGCZ



Numéro de catalogue: 21614-1-AP

Informations de base

Numéro de catalogue: 21614-1-AP	Numéro d'acquisition GenBank: BC125037	Méthode de purification: Purification par affinité contre l'antigène
Taille: 150ul, Concentration: 1000 µg/ml by Nanodrop;	Identification du gène (NCBI): 137868	Dilutions recommandées: WB 1:500-1:2000 IF 1:50-1:500
Hôte: Lapin	Nom complet: sarcoglycan zeta	
Isotype: IgG	MW calculé: 265 aa, 30 kDa	
Immunogen Catalog Number: AG16305	MW observés: 30-40 kDa	

Applications

Applications testées:
IF, WB, ELISA

Spécificité de l'espèce:
Humain

Contrôles positifs:

WB : tissu cardiaque de souris, tissu cardiaque de rat, tissu cérébral de souris

IF : tissu cardiaque de souris,

Informations générales

Sarcoglycan zeta, also known as SGCZ, ZSG1, is part of the sarcoglycan complex. The sarcoglycan complex is part of the dystrophin-associated glycoprotein complex (DGC), which bridges the inner cytoskeleton and the extracellular matrix. SGCZ plays a role in the maintenance of striated muscle membrane stability. SGCZ was also found as a component of the vascular smooth muscle sarcoglycan complex. SGCZ was reduced at the membrane in muscular dystrophy (PMID: 12189167).

Stockage

Stockage:
Stocker à -20°C. Stable pendant un an après l'expédition.

Tampon de stockage:
PBS avec azoture de sodium à 0,02 % et glycérol à 50 % pH 7,3

L'aliquotage n'est pas nécessaire pour le stockage à -20C

*** Les 20ul contiennent 0,1% de BSA.

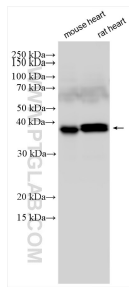
For technical support and original validation data for this product please contact:

T: 1 (888) 4PTGLAB (1-888-478-4522) (toll free in USA), or 1(312) 455-8498 (outside USA)

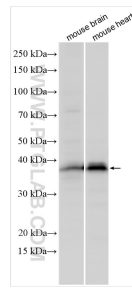
E: proteintech@ptglab.com
W: ptglab.com

This product is exclusively available under Proteintech Group brand and is not available to purchase from any other manufacturer.

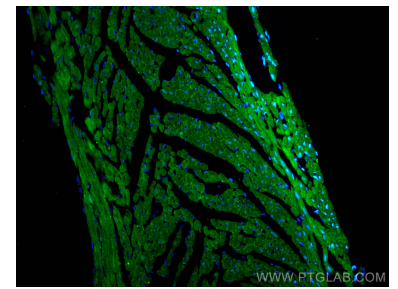
Données de validation sélectionnées



Various lysates were subjected to SDS PAGE followed by western blot with 21614-1-AP (SGCZ antibody) at dilution of 1:1000 incubated at room temperature for 1.5 hours.



Various lysates were subjected to SDS PAGE followed by western blot with 21614-1-AP (SGCZ antibody) at dilution of 1:800 incubated at room temperature for 1.5 hours.



Immunofluorescent analysis of (4% PFA) fixed mouse heart tissue using SGCZ antibody (21614-1-AP) at dilution of 1:200 and CoraLite®488-Conjugated AffiniPure Goat Anti-Rabbit IgG(H+L).