

À des fins de recherche uniquement

Anticorps Polyclonal de lapin anti-RNF20



Numéro de catalogue: 21625-1-AP

Phare

10 Publications

Informations de base

Numéro de catalogue:

21625-1-AP

Taille:

150ul, Concentration: 350 µg/ml by Nanodrop and 247 µg/ml by Bradford method using BSA as the standard;

Hôte:

Lapin

Isotype:

IgG

Immunogen Catalog Number:

AG16066

Numéro d'acquisition GenBank:

BC110585

Identification du gène (NCBI):

56254

Nom complet:

ring finger protein 20

MW calculé

975 aa, 114 kDa

MW observés:

114 kDa

Méthode de purification:

Purification par affinité contre l'antigène

Dilutions recommandées:

WB 1:1000-1:8000

IP 0.5-4.0 ug for IP and 1:500-1:1000 for WB

IHC 1:50-1:500

IF 1:200-1:800

Applications

Applications testées:

IF, IHC, IP, WB, ELISA

Demandes citées:

IF, WB

Spécificité de l'espèce:

Humain, rat, souris

Espèces citées:

Humain, porc, souris

Remarque-IHC: il est suggéré de démasquer l'antigène avec un tampon de TE buffer pH 9.0; (*) A défaut, 'le démasquage de l'antigène peut être effectué avec un tampon citrate pH 6,0.

Contrôles positifs:

WB : cellules HeLa, cellules Jurkat, cellules MCF-7, tissu hépatique de souris

IP : cellules HeLa,

IHC : tissu rénal de souris,

IF : cellules HepG2, cellules HeLa

Informations générales

RNF20, also named as E3 ubiquitin-protein ligase BRE1A, is a 975 amino acid protein, which contains 1 RING-type zinc finger and belongs to the BRE1 family. RNF20 is a component of the RNF20/40 complex and localizes in the nucleus. RNF20 is a component of the RNF20/40 E3 ubiquitin-protein ligase complex that mediates monoubiquitination of 'Lys-120' of histone H2B (H2BK120ub1). H2BK120ub1 gives a specific tag for epigenetic transcriptional activation and is also prerequisite for histone H3 'Lys-4' and 'Lys-79' methylation (H3K4me and H3K79me, respectively). The RNF20/40 complex forms a H2B ubiquitin ligase complex in cooperation with the E2 enzyme UBE2A or UBE2B. RNF20 is required for transcriptional activation of Hox genes and recruited to the MDM2 promoter, probably by being recruited by p53/TP53, and thereby acts as a transcriptional coactivator. RNF20/40 complex monoubiquitinates and stabilizes Eg5. Loss of RNF20/40 results in spindle assembly defects, cell cycle arrest and apoptosis. Spindle assembly role of the RNF20/40 complex, and implicates the RNF20/40-Eg5 axis in breast carcinogenesis, supporting the pursuit of these proteins as potential targets for breast cancer therapeutic interventions.

Publications notables

Autrice	Pubmed ID	Journal	Application
Mengtian Zhang	36103829	Cell Rep	WB,IF
Ying Zhao	34647359	Cell Prolif	WB
Muyu Xu	29791506	PLoS Pathog	WB

Stockage

Stockage:

Stocker à -20°C. Stable pendant un an après l'expédition.

Tampon de stockage:

PBS avec azoture de sodium à 0,02 % et glycérol à 50 % pH 7,3

L'aliquotage n'est pas nécessaire pour le stockage à -20C

*** Les 20ul contiennent 0,1% de BSA.

For technical support and original validation data for this product please contact:

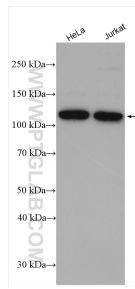
T: 1 (888) 4PTGLAB (1-888-478-4522) (toll free in USA), or 1(312) 455-8498 (outside USA)

E: proteintech@ptglab.com

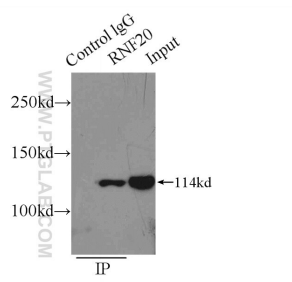
W: ptglab.com

This product is exclusively available under Proteintech Group brand and is not available to purchase from any other manufacturer.

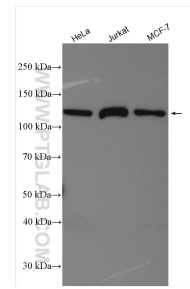
Données de validation sélectionnées



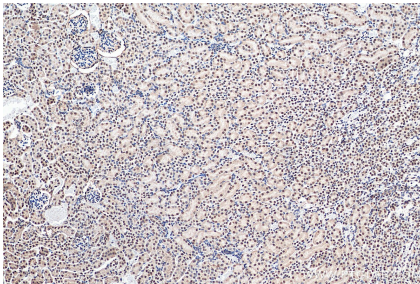
Various lysates were subjected to SDS PAGE followed by western blot with 21625-1-AP (RNF20 antibody) at dilution of 1:4000 incubated at room temperature for 1.5 hours.



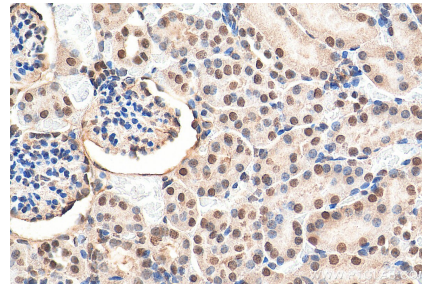
IP Result of anti-RNF20 (IP:21625-1-AP, 3ug; Detection:21625-1-AP 1:500) with HeLa cells lysate 2000ug.



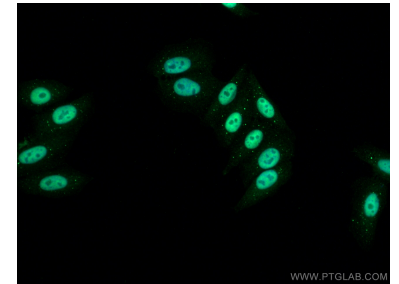
Various lysates were subjected to SDS PAGE followed by western blot with 21625-1-AP (RNF20 antibody) at dilution of 1:7000 incubated at room temperature for 1.5 hours.



Immunohistochemical analysis of paraffin-embedded mouse kidney tissue slide using 21625-1-AP (RNF20 antibody) at dilution of 1:200 (under 10x lens). Heat mediated antigen retrieval with Tris-EDTA buffer (pH 9.0).



Immunohistochemical analysis of paraffin-embedded mouse kidney tissue slide using 21625-1-AP (RNF20 antibody) at dilution of 1:200 (under 40x lens). Heat mediated antigen retrieval with Tris-EDTA buffer (pH 9.0).



Immunofluorescent analysis of (4% PFA) fixed HepG2 cells using RNF20 antibody (21625-1-AP) at dilution of 1:400 and CoraLite®488-Conjugated AffiniPure Goat Anti-Rabbit IgG(H+L).