

À des fins de recherche uniquement

Anticorps Polyclonal de lapin anti-PATL1



Numéro de catalogue: 21631-1-AP **Phare**

Informations de base

Numéro de catalogue:
21631-1-AP

Taille:
150ul, Concentration: 300 µg/ml by
Nanodrop and 233 µg/ml by Bradford
method using BSA as the standard;

Hôte:
Lapin

Isotype:
IgG

Immunogen Catalog Number:
AG16247

Numéro d'acquisition GenBank:
BC109038

Identification du gène (NCBI):
219988

Nom complet:
protein associated with
topoisomerase II homolog 1 (yeast)

MW calculé
770 aa, 87 kDa

MW observés:
87 kDa

Méthode de purification:
Purification par affinité contre
l'antigène

Dilutions recommandées:
WB 1:500-1:2000
IP 0.5-4.0 ug for IP and 1:200-1:1000
for WB

Applications

Applications testées:
IP, WB, ELISA

Spécificité de l'espèce:
Humain

Contrôles positifs:

WB : cellules MCF-7, cellules HeLa, cellules K-562

IP : cellules K-562,

Informations générales

Patellin1 (PATL1) is a human homolog to yeast P body component Pat1, localizes to P bodies and is required for P body formation. Furthermore, Pat1 is the only decapping activator protein that, besides interacting with deadenylated mRNAs, also binds to eIF4G-, eIF4E- and Pab1p-associated polyadenylated mRNA and locates to polysomes.

Stockage

Stockage:

Stocker à -20°C. Stable pendant un an après l'expédition.

Tampon de stockage:

PBS avec azoture de sodium à 0,02 % et glycérol à 50 % pH 7,3

L'aliquotage n'est pas nécessaire pour le stockage à -20C

*** Les 20ul contiennent 0,1% de BSA.

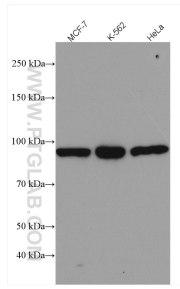
For technical support and original validation data for this product please contact:

T: 1 (888) 4PTGLAB (1-888-478-4522) (toll free
in USA), or 1(312) 455-8498 (outside USA)

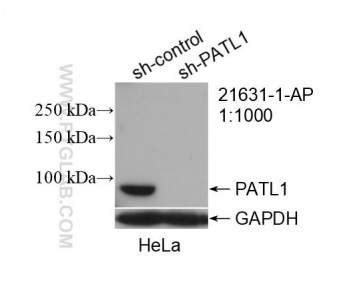
E: proteintech@ptglab.com
W: ptglab.com

This product is exclusively available under Proteintech Group brand and is not available to purchase from any other manufacturer.

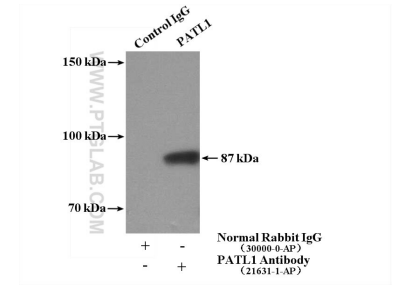
Données de validation sélectionnées



Various lysates were subjected to SDS PAGE followed by western blot with 21631-1-AP (PATL1 antibody) at dilution of 1:1000 incubated at room temperature for 1.5 hours.



WB result of PATL1 antibody (21631-1-AP; 1:1000; incubated at room temperature for 1.5 hours) with sh-Control and sh-PATL1 transfected HeLa cells.



IP Result of anti-PATL1 (IP:21631-1-AP, 4ug; Detection:21631-1-AP 1:300) with K-562 cells lysate 3320ug.