

À des fins de recherche uniquement

Anticorps Polyclonal de lapin anti-Cyclin B2



Numéro de catalogue: 21644-1-AP

Phare

18 Publications

Informations de base

Numéro de catalogue:
21644-1-AP

Taille:
150ul, Concentration: 500 µg/ml by Nanodrop and 327 µg/ml by Bradford method using BSA as the standard;

Hôte:
Lapin

Isotype:
IgG

Immunogen Catalog Number:
AG16329

Numéro d'acquisition GenBank:
BC105086

Identification du gène (NCBI):
9133

Nom complet:
cyclin B2

MW calculé
398 aa, 45 kDa

MW observés:
51 kDa

Méthode de purification:
Purification par affinité contre l'antigène

Dilutions recommandées:
WB 1:2000-1:12000
IP 0.5-4.0 ug for IP and 1:500-1:2000 for WB
IHC 1:20-1:200

Applications

Applications testées:
IHC, IP, WB, ELISA

Demandes citées:
IHC, IP, WB

Spécificité de l'espèce:
Humain, rat, souris

Espèces citées:
Humain, souris

Remarque-IHC: il est suggéré de démasquer l'antigène avec un tampon de TE buffer pH 9,0; (*) A défaut, le démasquage de l'antigène peut être effectué avec un tampon citrate pH 6,0.

Contrôles positifs:

WB : cellules A431, cellules DU 145, cellules HeLa, cellules K-562, tissu testiculaire de rat

IP : cellules A431,

IHC : tissu de cancer du col de l'utérus humain, tissu de cancer du côlon humain, tissu testiculaire humain

Informations générales

Cyclin B2 (CCNB2) is a member of cyclin family proteins, which regulate the activities of cyclin dependent kinases (CDKs) and different cyclins function spatially and temporally in specific phases of the cell cycle. Cyclin B2 serves a key role in progression of G2/M transition. Cyclin B2 has been found to be up-regulated in a variety of human cancers, such as adrenocortical carcinoma, breast carcinoma, colorectal adenocarcinoma, pituitary adenoma and gastric cancer. The aberrant expression of Cyclin B2 deregulates spindle checkpoints in the cell cycle and results in chromosomal instability (CIN), one of the signature phenotypes of most cancers. Moreover, serum circulating Cyclin B2 mRNA expression has been found increased in cancer patients and associated with cancer stage and metastasis status.

Publications notables

Autrice	Pubmed ID	Journal	Application
Fang Li	36116238	Ecotoxicol Environ Saf	WB
Xiaoyue Zhang	34729106	J Cancer	WB
Zhipeng Qi	34822792	Chem Biol Interact	WB

Stockage

Stockage:

Stocker à -20°C. Stable pendant un an après l'expédition.

Tampon de stockage:

PBS avec azoture de sodium à 0,02 % et glycérol à 50 % pH 7,3

L'aliquotage n'est pas nécessaire pour le stockage à -20C

*** Les 20ul contiennent 0,1% de BSA.

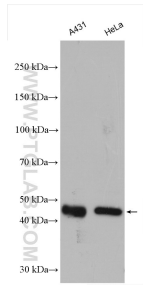
For technical support and original validation data for this product please contact:

T: 1 (888) 4PTGLAB (1-888-478-4522) (toll free in USA), or 1(312) 455-8498 (outside USA)

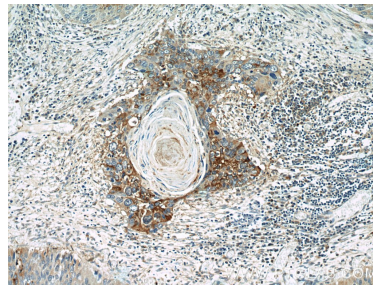
E: proteintech@ptglab.com
W: ptglab.com

This product is exclusively available under Proteintech Group brand and is not available to purchase from any other manufacturer.

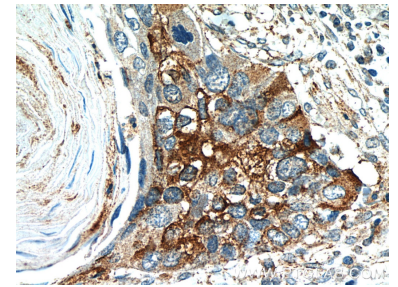
Données de validation sélectionnées



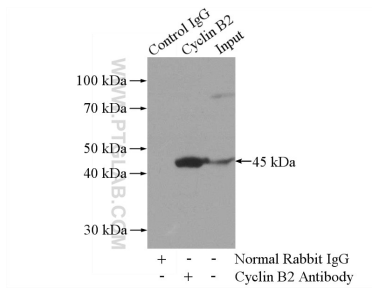
Various lysates were subjected to SDS PAGE followed by western blot with 21644-1-AP (Cyclin B2 antibody) at dilution of 1:6000 incubated at room temperature for 1.5 hours.



Immunohistochemical analysis of paraffin-embedded human cervical cancer tissue slide using 21644-1-AP (Cyclin B2 antibody at dilution of 1:200 (under 10x lens).



Immunohistochemical analysis of paraffin-embedded human cervical cancer tissue slide using 21644-1-AP (Cyclin B2 antibody at dilution of 1:200 (under 40x lens).



IP Result of anti-Cyclin B2 (IP:21644-1-AP, 4ug; Detection:21644-1-AP 1:1000) with A431 cells lysate 2000ug.