

À des fins de recherche uniquement

Anticorps Polyclonal de lapin anti-ROCK2(middle)



Numéro de catalogue: 21645-1-AP

Phare

14 Publications

Informations de base

Numéro de catalogue:

21645-1-AP

Taille:

150ul, Concentration: 700 µg/ml by Nanodrop and 520 µg/ml by Bradford method using BSA as the standard;

Hôte:

Lapin

Isotype:

IgG

Immunogen Catalog Number:

AG16330

Numéro d'acquisition GenBank:

BC111801

Identification du gène (NCBI):

9475

Nom complet:

Rho-associated, coiled-coil containing protein kinase 2

MW calculé

77 kDa, 161 kDa

MW observés:

161 kDa

Méthode de purification:

Purification par affinité contre l'antigène

Dilutions recommandées:

WB 1:1000-1:4000

IP 0.5-4.0 ug for IP and 1:500-1:1000 for WB

IHC 1:50-1:500

IF 1:50-1:500

Applications

Applications testées:

IF, IHC, IP, WB, ELISA

Demandes citées:

IHC, IP, WB

Spécificité de l'espèce:

Humain, rat, souris

Espèces citées:

Humain, rat, souris

Remarque-IHC: il est suggéré de démasquer l'antigène avec un tampon de TE buffer pH 9,0; (*) A défaut, 'le démasquage de l'antigène peut être effectué avec un tampon citrate pH 6,0.

Contrôles positifs:

WB : cellules HT-1080, cellules HeLa, cellules L02, cellules MCF-7, tissu cérébral de souris, tissu hépatique de souris, tissu pulmonaire de souris

IP : cellules HeLa,

IHC : tissu hépatique humain,

IF : cellules HepG2, cellules HeLa

Informations générales

ROCK2 is a serine/threonine kinase that regulates cytokinesis, smooth muscle contraction, the formation of actin stress fibers and focal adhesions, and the activation of the c-fos serum response element. It is an isozyme of ROCK1, is a target for the small GTPase Rho. ROCK2 is localized in both cytoplasm and nucleus, and the nucleus-localized ROCK2 can target p300 for phosphorylation to regulate its acetyltransferase activity (PMID:16574662).

Publications notables

Autrice	Pubmed ID	Journal	Application
Da Huang	25251472	Biochem Biophys Res Commun	WB
K Liu	31610097	Andrology	WB, IHC
Kathryn N Becker	35563863	Cells	WB

Stockage

Stockage:

Stocker à -20°C. Stable pendant un an après l'expédition.

Tampon de stockage:

PBS avec azoture de sodium à 0,02 % et glycérol à 50 % pH 7,3

L'aliquotage n'est pas nécessaire pour le stockage à -20C

*** Les 20ul contiennent 0,1% de BSA.

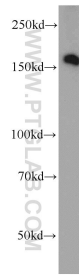
For technical support and original validation data for this product please contact:

T: 1 (888) 4PTGLAB (1-888-478-4522) (toll free in USA), or 1(312) 455-8498 (outside USA)

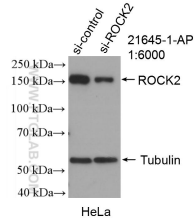
E: proteintech@ptglab.com
W: ptglab.com

This product is exclusively available under Proteintech Group brand and is not available to purchase from any other manufacturer.

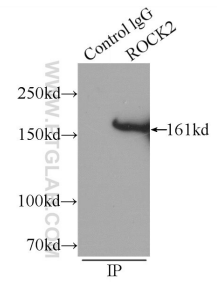
Données de validation sélectionnées



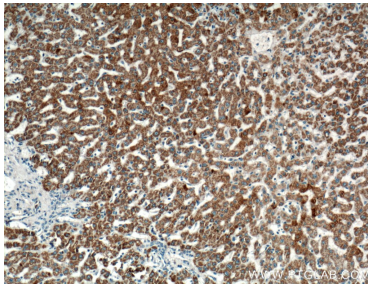
HT-1080 cells were subjected to SDS PAGE followed by western blot with 21645-1-AP (ROCK2(middle) antibody) at dilution of 1:1000 incubated at room temperature for 1.5 hours.



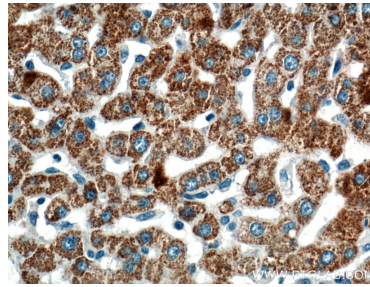
WB result of ROCK2(middle) antibody (21645-1-AP; 1:6000; incubated at room temperature for 1.5 hours) with sh-Control and sh-ROCK2(middle) transfected HeLa cells.



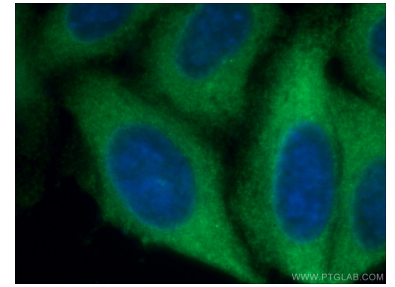
IP Result of anti-ROCK2(middle) (IP:21645-1-AP, 5ug; Detection:21645-1-AP 1:700) with HeLa cells lysate 1320ug.



Immunohistochemical analysis of paraffin-embedded human liver tissue slide using 21645-1-AP (ROCK2(middle) antibody) at dilution of 1:200 (under 10x lens).



Immunohistochemical analysis of paraffin-embedded human liver tissue slide using 21645-1-AP (ROCK2(middle) antibody) at dilution of 1:200 (under 40x lens).



Immunofluorescent analysis of (-20°C Ethanol) fixed HepG2 cells using 21645-1-AP (ROCK2(middle) antibody) at dilution of 1:50 and Alexa Fluor 488-conjugated AffiniPure Goat Anti-Rabbit IgG(H+L).