

À des fins de recherche uniquement

Anticorps Polyclonal de lapin anti-PRKG1



Numéro de catalogue: 21646-1-AP

Phare

13 Publications

Informations de base

Numéro de catalogue: 21646-1-AP	Numéro d'acquisition GenBank: BC127090	Méthode de purification: Purification par affinité contre l'antigène
Taille: 150ul, Concentration: 900 µg/ml by Nanodrop and 513 µg/ml by Bradford method using BSA as the standard;	Identification du gène (NCBI): 5592	Dilutions recommandées: WB 1:1000-1:3000 IP 0.5-4.0 ug for IP and 1:500-1:1000 for WB IHC 1:50-1:500
Hôte: Lapin	Nom complet: protein kinase, cGMP-dependent, type I	
Isotype: IgG	MW calculé 686 aa, 78 kDa	
Immunogen Catalog Number: AG16333	MW observés: 65-78 kDa	

Applications

Applications testées:

IHC, IP, WB, ELISA

Demandes citées:

IHC, WB

Spécificité de l'espèce:

Humain, rat, souris

Espèces citées:

bovin, Humain, rat, souris

Remarque-IHC: il est suggéré de démasquer l'antigène avec un tampon de TE buffer pH 9,0; (*) A défaut, 'le démasquage de l'antigène peut être 'effectué avec un tampon citrate pH 6,0.

Contrôles positifs:

WB : tissu cérébral de souris, tissu cérébral de rat, tissu pulmonaire de souris, tissu rénal de souris

IP : tissu cérébral de souris,

IHC : tissu cardiaque humain,

Informations générales

PRKG1(cGMP-dependent protein kinase 1) is also named as cGK1, PRKG1B, PRKGR1A, PRKGR1B and belongs to the cGMP subfamily. It serves as an integral component of second messenger signaling in a number of biological contexts including cell differentiation, memory, and vasodilation(PMID:21893290). Its activity prevents pathological-level nitric oxide-induced apoptosis and promotes DNA synthesis/cell proliferation in vascular smooth muscle cells(PMID:20060325). PRKG1 has 2 isoforms produced by alternative splicing with the molecular weight of 76 kDa and 78 kDa. The autophosphorylation can increase the kinase activity and it can form a monomer with the molecular weight of 65 kDa that is produced by proteolytic cleavage. SDS-PAGE revealed that proteolysis generated two different monomers with molecular masses of 70 and 68 kDa of CGK1-beta(PMID:8702828).

Publications notables

Autrice	Pubmed ID	Journal	Application
Liqian Chen	36099983	J Ethnopharmacol	WB
Dan Zhang	36353487	Front Pharmacol	WB
Jingsi Chen	33093639	Hypertens Res	WB,IHC

Stockage

Stockage:

Stocker à -20°C. Stable pendant un an après l'expédition.

Tampon de stockage:

PBS avec azoture de sodium à 0,02 % et glycérol à 50 % pH 7,3

L'aliquotage n'est pas nécessaire pour le stockage à -20C

*** Les 20ul contiennent 0,1% de BSA.

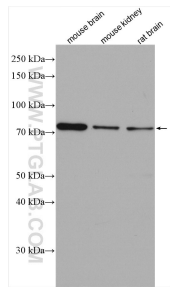
For technical support and original validation data for this product please contact:

T: 1 (888) 4PTGLAB (1-888-478-4522) (toll free in USA), or 1(312) 455-8498 (outside USA)

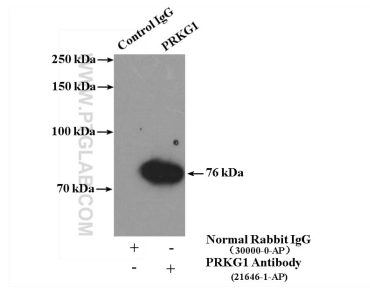
E: proteintech@ptglab.com
W: ptglab.com

This product is exclusively available under Proteintech Group brand and is not available to purchase from any other manufacturer.

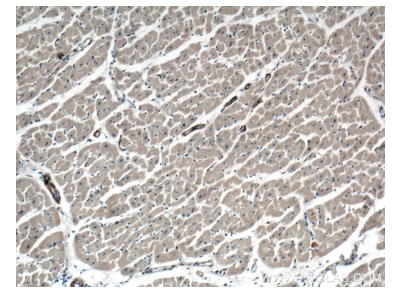
Données de validation sélectionnées



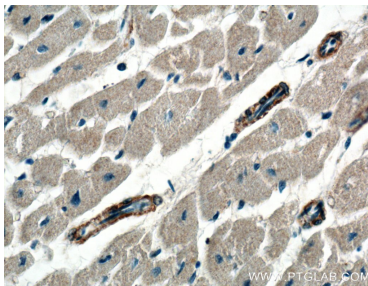
Various lysates were subjected to SDS PAGE followed by western blot with 21646-1-AP (PRKG1 antibody) at dilution of 1:1000 incubated at room temperature for 1.5 hours.



IP Result of anti-PRKG1 (IP:21646-1-AP, 4ug; Detection:21646-1-AP 1:600) with mouse brain tissue lysate 4000ug.



Immunohistochemical analysis of paraffin-embedded human heart tissue slide using 21646-1-AP (PRKG1 Antibody) at dilution of 1:200 (under 10x lens).



Immunohistochemical analysis of paraffin-embedded human heart tissue slide using 21646-1-AP (PRKG1 Antibody) at dilution of 1:200 (under 40x lens).