

À des fins de recherche uniquement

Anticorps Polyclonal de lapin anti-Cardiac Troponin I



Numéro de catalogue: 21652-1-AP

23 Publications

Informations de base

Numéro de catalogue:

21652-1-AP

Taille:

150ul, Concentration: 450 µg/ml by Nanodrop;

Hôte:

Lapin

Isotype:

IgG

Immunogen Catalog Number:

AG16365

Numéro d'acquisition GenBank:

BC096165

Identification du gène (NCBI):

7137

Nom complet:

troponin I type 3 (cardiac)

MW calculé

210 aa, 24 kDa

MW observés:

24-26 kDa

Méthode de purification:

Purification par affinité contre l'antigène

Dilutions recommandées:

WB 1:1000-1:6000

IP 0.5-4.0 µg for IP and 1:500-1:1000 for WB

IHC 1:500-1:2000

IF 1:300-1:1200

Applications

Applications testées:

IF, IHC, IP, WB, ELISA

Demandes citées:

ELISA, IF, IHC, WB

Spécificité de l'espèce:

Humain, rat, souris

Espèces citées:

Humain, rat, souris

Contrôles positifs:

WB : tissu cardiaque de rat, tissu cardiaque de souris

IP : tissu cardiaque de souris,

IHC : tissu cardiaque de souris, tissu cardiaque humain, tissu pulmonaire de souris

IF : tissu cardiaque de souris,

Remarque-IHC: il est suggéré de démasquer l'antigène avec un tampon de TE buffer pH 9,0; (*) À défaut, 'le démasquage de l'antigène peut être 'effectué avec un tampon citrate pH 6,0.

Informations générales

Troponin I (TnI) is the inhibitory subunit of troponin, the structural protein involved in the regulation of striated muscle contraction. Cardiac Troponin I (cTnI) is produced by cardiac muscle. cTnI has been considered as one of the most specific and sensitive markers of myocardial damage like acute myocardial infarction (AMI) for decades. Detection of cTnI in serum is widely accepted as a diagnostic tool in acute coronary syndromes.

Publications notables

Autrice	Pubmed ID	Journal	Application
Xin Li	31534118	Cell Death Dis	WB
Qianyun Nie	36267753	Ann Transl Med	WB
Lingfei Li	30327268	EBioMedicine	IF

Stockage

Stockage:

Stocker à -20°C. Stable pendant un an après l'expédition.

Tampon de stockage:

PBS avec azoture de sodium à 0,02 % et glycérol à 50 % pH 7,3

L'aliquotage n'est pas nécessaire pour le stockage à -20C

*** Les 20ul contiennent 0,1% de BSA.

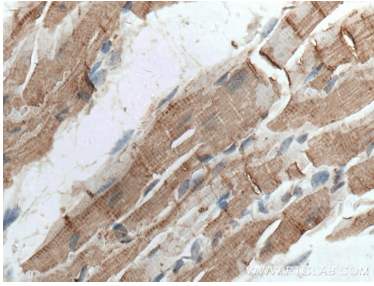
For technical support and original validation data for this product please contact:

T: 1 (888) 4PTGLAB (1-888-478-4522) (toll free in USA), or 1(312) 455-8498 (outside USA)

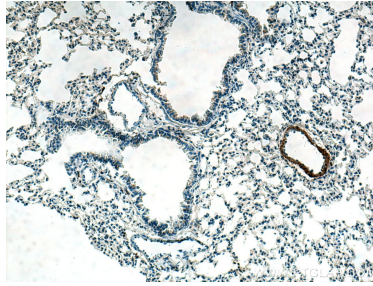
E: proteintech@ptglab.com
W: ptglab.com

This product is exclusively available under Proteintech Group brand and is not available to purchase from any other manufacturer.

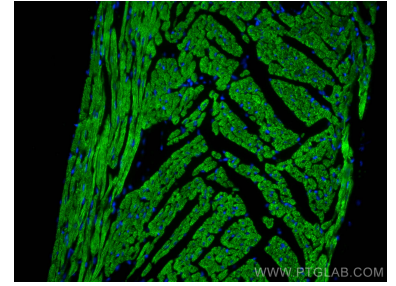
Données de validation sélectionnées



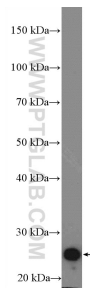
Immunohistochemical analysis of paraffin-embedded mouse heart tissue slide using 21652-1-AP (Cardiac Troponin I antibody) at dilution of 1:1000 (under 40x lens). Heat mediated antigen retrieval with Tris-EDTA buffer (pH 9.0).



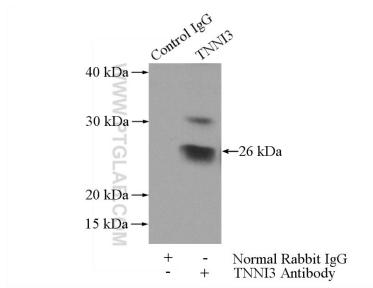
Immunohistochemical analysis of paraffin-embedded mouse lung tissue slide using 21652-1-AP (Cardiac Troponin I antibody) at dilution of 1:400 (under 10x lens). Heat mediated antigen retrieval with Tris-EDTA buffer (pH 9.0).



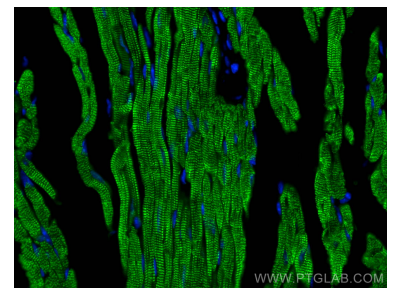
Immunofluorescent analysis of (4% PFA) fixed mouse heart tissue using Cardiac Troponin I antibody (21652-1-AP) at dilution of 1:600 and CoraLite®488-Conjugated AffiniPure Goat Anti-Rabbit IgG(H+L).



rat heart tissue were subjected to SDS PAGE followed by western blot with 21652-1-AP (Cardiac Troponin I antibody) at dilution of 1:3000 incubated at room temperature for 1.5 hours.



IP Result of anti-Cardiac Troponin I (IP:21652-1-AP, 3ug; Detection:21652-1-AP 1:700) with mouse heart tissue lysate 4000ug.



Immunofluorescent analysis of (4% PFA) fixed mouse heart tissue using Cardiac Troponin I antibody (21652-1-AP) at dilution of 1:600 and CoraLite®488-Conjugated AffiniPure Goat Anti-Rabbit IgG(H+L).