

À des fins de recherche uniquement

Anticorps Polyclonal de lapin anti-SMC1A



Numéro de catalogue: 21695-1-AP

3 Publications

Informations de base

Numéro de catalogue: 21695-1-AP	Numéro d'acquisition GenBank: BC112127	Méthode de purification: Purifié par affinité contre l'antigène
Taille: 150ul, Concentration: 650 µg/ml by Nanodrop and 293 µg/ml by Bradford method using BSA as the standard;	Identification du gène (NCBI): 8243	Dilutions recommandées: WB 1:1000-1:4000 IHC 1:50-1:500
Hôte: Lapin	Nom complet: structural maintenance of chromosomes 1A	
Isotype: IgG	MW calculé: 1233 aa, 143 kDa	
Immunogen Catalog Number: AG16286	MW observés: 143-150 kDa	

Applications

Applications testées: IHC, WB, ELISA	Contrôles positifs: WB : cellules A431, cellules HeLa, cellules K-562, cellules NIH/3T3 IHC : tissu de gliome humain,
Demandes citées: IHC, WB	
Spécificité de l'espèce: Humain, souris	
Espèces citées: Humain	

Remarque-IHC: il est suggéré de démasquer l'antigène avec un tampon de TE buffer pH 9,0; (*) A défaut, le démasquage de l'antigène peut être effectué avec un tampon citrate pH 6,0.

Informations générales

Structural maintenance of chromosomes protein 1A (SMC1A) is involved in chromosome cohesion during cell cycle and in DNA repair. It is a central component of cohesin complex which is required for the cohesion of sister chromatids after DNA replication. The cohesin complex apparently forms a large proteinaceous ring within which sister chromatids can be trapped. At anaphase, the complex is cleaved and dissociates from chromatin, allowing sister chromatids to segregate. The cohesin complex may also play a role in spindle pole assembly during mitosis. Involved in DNA repair via its interaction with BRCA1 and its related phosphorylation by ATM, or via its phosphorylation by ATR. Works as a downstream effector both in the ATM/NBS1 branch and in the ATR/MSH2 branch of S-phase checkpoint.

Publications notables

Autrice	Pubmed ID	Journal	Application
Nerea Ugidos	31620119	Front Immunol	WB
Wen-Juan Xiao	31803224	Front Genet	WB
Weidong Lin	37212524	Cancer Med	WB,IHC

Stockage

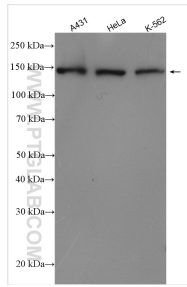
Stockage:
Stocker à -20°C. Stable pendant un an après l'expédition.
Tampon de stockage:
PBS avec azoture de sodium à 0,02 % et glycérol à 50 % pH 7,3
L'aliquotage n'est pas nécessaire pour le stockage à -20C

*** Les 20ul contiennent 0,1% de BSA.

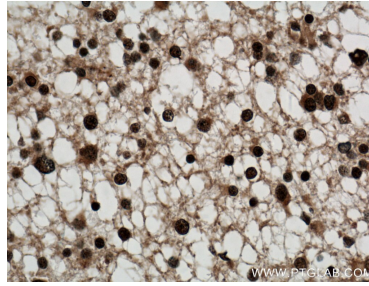
For technical support and original validation data for this product please contact:
T: 1 (888) 4PTGLAB (1-888-478-4522) (toll free in USA), or 1(312) 455-8498 (outside USA)
E: proteintech@ptglab.com
W: ptglab.com

This product is exclusively available under Proteintech Group brand and is not available to purchase from any other manufacturer.

Données de validation sélectionnées



Various lysates were subjected to SDS PAGE followed by western blot with 21695-1-AP (SMC1A antibody) at dilution of 1:2000 incubated at room temperature for 1.5 hours.



Immunohistochemical analysis of paraffin-embedded human gliomas tissue slide using 21695-1-AP (SMC1A Antibody) at dilution of 1:200 (under 40x Lens). Heat mediated antigen retrieval with Tris-EDTA buffer (pH 9.0).