

À des fins de recherche uniquement

Anticorps Polyclonal de lapin anti-NEDD4



Numéro de catalogue: 21698-1-AP

Phare

29 Publications

Informations de base

Numéro de catalogue:

21698-1-AP

Taille:

150ul, Concentration: 350 µg/ml by Nanodrop;

Hôte:

Lapin

Isotype:

IgG

Immunogen Catalog Number:

AG16291

Numéro d'acquisition GenBank:

BC152452

Identification du gène (NCBI):

4734

Nom complet:

neural precursor cell expressed, developmentally down-regulated 4

MW calculé

1319 aa, 149 kDa

MW observés:

115 kDa

Méthode de purification:

Purification par affinité contre l'antigène

Dilutions recommandées:

WB 1:1000-1:8000

IP 0.5-4.0 ug for IP and 1:500-1:1000 for WB

IHC 1:50-1:500

Applications

Applications testées:

IHC, IP, WB, ELISA

Demandes citées:

CoIP, IF, IHC, IP, WB

Spécificité de l'espèce:

Humain, rat, singe, souris

Espèces citées:

Humain, poulet, rat, souris

Contrôles positifs:

WB : cellules A549, cellules C6, cellules COS-7, cellules HEK-293, cellules HT-1080, cellules Jurkat, cellules NIH/3T3

IP : cellules C6,

IHC : tissu de cancer du sein humain, tissu de cancer du poumon humain, tissu hépatique humain

Remarque-IHC: il est suggéré de démasquer l'antigène avec un tampon de TE buffer pH 9.0; (*) À défaut, le démasquage de l'antigène peut être effectué avec un tampon citrate pH 6.0.

Informations générales

NEDD4 and similar proteins discovered subsequently became a family of HECT ligases, comprising 9 human proteins including NEDD4, NEDD4-2 (NEDD4L), ITCH, SMURF1, SMURF2, WWP1, WWP2, NEDL1 AND NEDL2. NEDD4 is a highly evolutionarily conserved protein from yeast to man, and was initially cloned as a highly expressed gene in the early embryonic brain. NEDD4 is frequently overexpressed in many different types of cancer, and decreased levels of NEDD4 can also be associated with cancer. It can be a potential therapeutic target for the treatment of human cancer. (PMID: 25527121). The human NEDD4 gene is located on chromosome 15q21.3 and comprises 30 exons (HGNC:7727) shown to encode a ~120 kDa protein. Otherwise there is a 75 kDa isoform in addition to full length NEDD4 (PMID: 24907641).

Publications notables

Autrice	Pubmed ID	Journal	Application
Haichuan Wang	33232824	Cell Mol Gastroenterol Hepatol	IHC
Yiru Shao	35355403	J Cell Mol Med	WB,IHC
Jincheng Zhang	35271885	Virus Res	WB

Stockage

Stockage:

Stocker à -20°C. Stable pendant un an après l'expédition.

Tampon de stockage:

PBS avec azoture de sodium à 0,02 % et glycérol à 50 % pH 7,3

L'aliquotage n'est pas nécessaire pour le stockage à -20C

*** Les 20ul contiennent 0,1% de BSA.

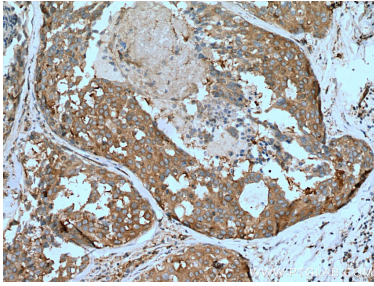
For technical support and original validation data for this product please contact:

T: 1 (888) 4PTGLAB (1-888-478-4522) (toll free in USA), or 1(312) 455-8498 (outside USA)

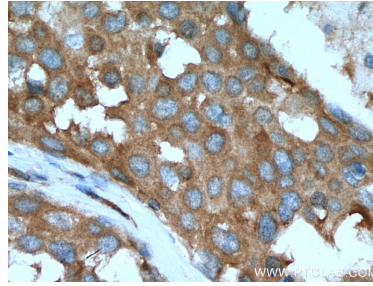
E: proteintech@ptglab.com
W: ptglab.com

This product is exclusively available under Proteintech Group brand and is not available to purchase from any other manufacturer.

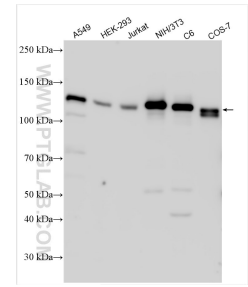
Données de validation sélectionnées



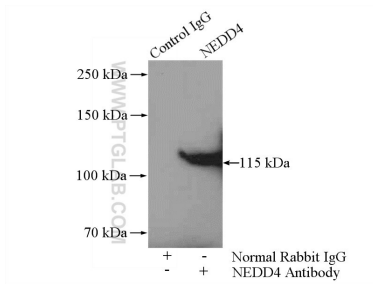
Immunohistochemical analysis of paraffin-embedded human breast cancer tissue slide using 21698-1-AP (NEDD4 antibody) at dilution of 1:200 (under 10x lens). Heat mediated antigen retrieval with Tris-EDTA buffer (pH 9.0).



Immunohistochemical analysis of paraffin-embedded human breast cancer tissue slide using 21698-1-AP (NEDD4 antibody) at dilution of 1:200 (under 40x lens). Heat mediated antigen retrieval with Tris-EDTA buffer (pH 9.0).



Various lysates were subjected to SDS PAGE followed by western blot with 21698-1-AP (NEDD4 antibody) at dilution of 1:4000 incubated at room temperature for 1.5 hours.



IP Result of anti-NEDD4 (IP:21698-1-AP, 4ug; Detection:21698-1-AP 1:500) with C6 cells lysate 1600ug.