

À des fins de recherche uniquement

Anticorps Polyclonal de lapin anti-DCLK1



Numéro de catalogue: 21699-1-AP

Phare

7 Publications

Informations de base

Numéro de catalogue:

21699-1-AP

Taille:

150ul, Concentration: 600 µg/ml by Nanodrop and 333 µg/ml by Bradford method using BSA as the standard;

Hôte:

Lapin

Isotype:

IgG

Immunogen Catalog Number:

AG16292

Numéro d'acquisition GenBank:

BC152456

Identification du gène (NCBI):

9201

Nom complet:

doublecortin-like kinase 1

MW calculé

729 aa, 81 kDa

MW observés:

48 kDa, 82 kDa

Méthode de purification:

Purification par affinité contre l'antigène

Dilutions recommandées:

WB 1:500-1:3000

IP 0.5-4.0 ug for IP and 1:500-1:2000 for WB

Applications

Applications testées:

IP, WB, ELISA

Demandes citées:

FC, IF, IHC, IP, WB

Spécificité de l'espèce:

Humain, rat, souris

Espèces citées:

Humain, souris

Contrôles positifs:

WB : tissu cérébral de rat, tissu cérébral de souris, tissu cérébral humain

IP : tissu cérébral de rat,

Informations générales

DCLK1 (Serine/threonine-protein kinase DCLK1) is also named as DCAMKL1, DCDC3A, KIAA0369 and belongs to the CAMK Ser/Thr protein kinase family. It is a microtubule-associated kinase that can undergo autophosphorylation and it also has microtubule-polymerizing activity that is independent of its protein kinase activity (PMID: 11124993). It plays a unique role in mitotic spindle integrity during early neurogenesis in radial glial cell proliferation and their radial process stability. DCLK1 is a unique marker for distinguishing tumor stem cells from intestinal normal stem cells (PMID: 23202126). This protein has 4 isoforms produced by alternative splicing with the molecular weight of 82 kDa, 81 kDa, 47 kDa and 48 kDa.

Publications notables

Autrice	Pubmed ID	Journal	Application
Kai Lu	31562534	J Gastroenterol	WB
Mahan Si	36210463	Cell Biosci	WB
Lanqing Wang	35522902	Clin Transl Med	WB,IHC,IF,IP

Stockage

Stockage:

Stocker à -20°C. Stable pendant un an après l'expédition.

Tampon de stockage:

PBS avec azoture de sodium à 0,02 % et glycérol à 50 % pH 7,3

L'aliquotage n'est pas nécessaire pour le stockage à -20C

*** Les 20ul contiennent 0,1% de BSA.

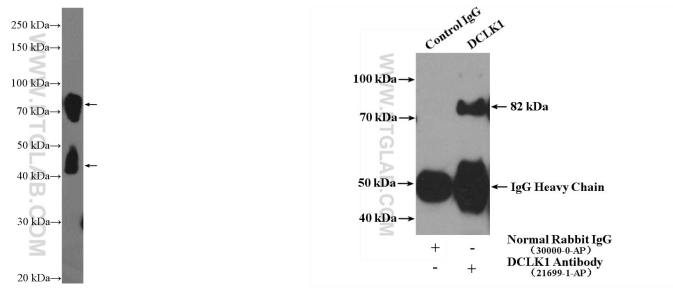
For technical support and original validation data for this product please contact:

T: 1 (888) 4PTGLAB (1-888-478-4522) (toll free in USA), or 1(312) 455-8498 (outside USA)

E: proteintech@ptglab.com
W: ptglab.com

This product is exclusively available under Proteintech Group brand and is not available to purchase from any other manufacturer.

Données de validation sélectionnées



rat brain tissue were subjected to SDS PAGE followed by western blot with 21699-1-AP (DCLK1 Antibody) at dilution of 1:1500 incubated at room temperature for 1.5 hours.

IP Result of anti-DCLK1 (IP:21699-1-AP, 4ug; Detection:21699-1-AP 1:1000) with rat brain tissue lysate 4000ug.