

À des fins de recherche uniquement

Anticorps Polyclonal de lapin anti-APAF1



Numéro de catalogue: 21710-1-AP

Phare

43 Publications

Informations de base

Numéro de catalogue:

21710-1-AP

Taille:

150ul, Concentration: 153 µg/ml by Bradford method using BSA as the standard;

Hôte:

Lapin

Isotype:

IgG

Immunogen Catalog Number:

AG16336

Numéro d'acquisition GenBank:

BC136532

Identification du gène (NCBI):

317

Nom complet:

apoptotic peptidase activating factor 1

MW calculé

1248 aa, 142 kDa

MW observés:

130-142 kDa

Méthode de purification:

Purification par affinité contre l'antigène

Dilutions recommandées:

WB 1:500-1:2000

IP 0.5-4.0 ug for IP and 1:500-1:1000 for WB

IHC 1:50-1:500

IF 1:20-1:200

Applications

Applications testées:

IF, IHC, IP, WB, ELISA

Demandes citées:

IF, IHC, WB

Spécificité de l'espèce:

Humain, rat

Espèces citées:

Humain, rat, souris

Remarque-IHC: il est suggéré de démasquer l'antigène avec un tampon de TE buffer pH 9,0; (*) A défaut, 'le démasquage de l'antigène peut être 'effectué avec un tampon citrate pH 6,0.

Contrôles positifs:

WB : cellules HEK-293, cellules A549, cellules COLO 320

IP : cellules HEK-293,

IHC : tissu cardiaque humain,

IF : cellules A549,

Informations générales

APAF1, also named as Apoptotic protease-activating factor 1 or KIAA0413, is a 1248 amino acid protein, which contains one CARD domain, contains one NB-ARC domain and Contains fifteen WD repeats. APAF1 localizes in the cytoplasm and is widely expressed in many tissues. Highest levels of expression is in adult spleen, peripheral blood leukocytes, in fetal brain, kidney and lung. Oligomeric APAF1 mediates the cytochrome c-dependent autocatalytic activation of pro-caspase-9 (Apaf-3), leading to the activation of caspase-3 and apoptosis.

Publications notables

| Autrice | Pubmed ID | Journal | Application |
|--------------|-----------|--------------|-------------|
| Xiaoman Chen | 30207732 | Mol Pharm | WB |
| Jinghua Du | 29158819 | Theranostics | WB |
| Hongtao Duan | 29151915 | Oncol Lett | WB |

Stockage

Stockage:

Stocker à -20°C. Stable pendant un an après l'expédition.

Tampon de stockage:

PBS avec azoture de sodium à 0,02 % et glycérol à 50 % pH 7,3

L'aliquotage n'est pas nécessaire pour le stockage à -20C

*** Les 20ul contiennent 0,1% de BSA.

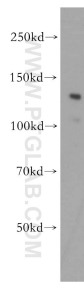
For technical support and original validation data for this product please contact:

T: 1 (888) 4PTGLAB (1-888-478-4522) (toll free in USA), or 1(312) 455-8498 (outside USA)

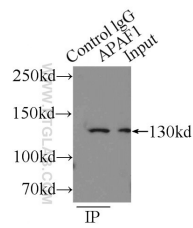
E: proteintech@ptglab.com
W: ptglab.com

This product is exclusively available under Proteintech Group brand and is not available to purchase from any other manufacturer.

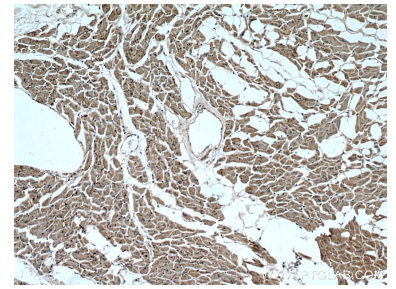
Données de validation sélectionnées



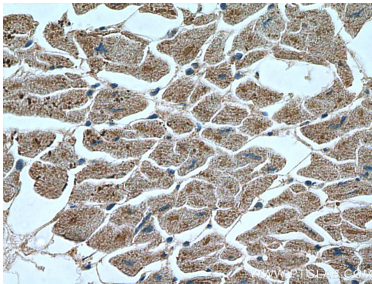
HEK-293 cells were subjected to SDS PAGE followed by western blot with 21710-1-AP (APAF1 antibody) at dilution of 1:500 incubated at room temperature for 1.5 hours.



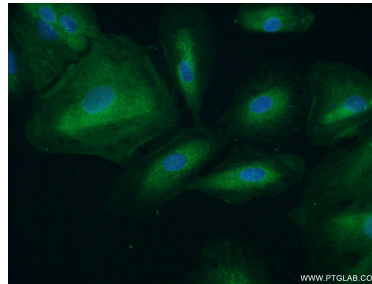
IP Result of anti-APAF1 (IP:21710-1-AP, 4ug; Detection:21710-1-AP 1:500) with HEK-293 cells lysate 2000ug.



Immunohistochemical analysis of paraffin-embedded human heart tissue slide using 21710-1-AP (APAF1 Antibody) at dilution of 1:200 (under 10x lens).



Immunohistochemical analysis of paraffin-embedded human heart tissue slide using 21710-1-AP (APAF1 Antibody) at dilution of 1:200 (under 40x lens).



Immunofluorescent analysis of A549 cells using 21710-1-AP (APAF1 antibody) at dilution of 1:50 and Alexa Fluor 488-conjugated AffiniPure Goat Anti-Rabbit IgG(H+L).