

À des fins de recherche uniquement

# Anticorps Polyclonal de lapin anti-SLC15A1/PEPT1



Numéro de catalogue: 21726-1-AP

1 Publications

## Informations de base

<b>Numéro de catalogue:</b> 21726-1-AP	<b>Numéro d'acquisition GenBank:</b> BC096327	<b>Méthode de purification:</b> Purification par affinité contre l'antigène
<b>Taille:</b> 150ul , Concentration: 300 µg/ml by Nanodrop;	<b>Identification du gène (NCBI):</b> 6564	<b>Dilutions recommandées:</b> WB 1:500-1:2000
<b>Hôte:</b> Lapin	<b>Nom complet:</b> solute carrier family 15 (oligopeptide transporter), member 1	
<b>Isotype:</b> IgG	<b>MW calculé:</b> 708 aa, 79 kDa	
<b>Immunogen Catalog Number:</b> AG16390	<b>MW observés:</b> 70-80 kDa	

## Applications

<b>Applications testées:</b> WB, ELISA	<b>Contrôles positifs:</b> WB : cellules COLO 320, cellules Caco-2, cellules HT-29, cellules MOLT-4, tissu d'intestin grêle de souris
<b>Demandes citées:</b> IHC	
<b>Spécificité de l'espèce:</b> Humain, souris	
<b>Espèces citées:</b> Humain	

## Informations générales

SLC15A1/PEPT1 is a peptide transporter that transports oligopeptides of 2 to 4 amino acids with a preference for dipeptides. PEPT1 mediates transepithelial transport of muramyl and N-formylated bacterial dipeptides contributing to recognition of pathogenic bacteria by the mucosal immune system. PEPT1 is primarily expressed in the small intestine (PMID: 22194420). PEPT1 is also expressed in distal colon in rodents and humans and contributes to water absorption. 71 kDa nonglycosylated PEPT1 protein can be detected (PMID: 23660505).

## Publications notables

Autrice	Pubmed ID	Journal	Application
Kumi Ogiwara	28416355	Photodiagnosis Photodyn Ther	IHC

## Stockage

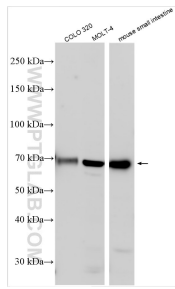
**Stockage:**  
Stocker à -20°C. Stable pendant un an après l'expédition.  
**Tampon de stockage:**  
PBS avec azoture de sodium à 0,02 % et glycérol à 50 % pH 7,3  
L'aliquotage n'est pas nécessaire pour le stockage à -20C

\*\*\* Les 20ul contiennent 0,1% de BSA.

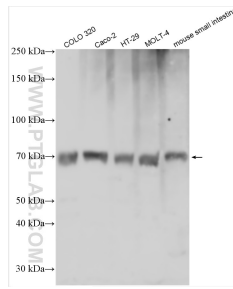
For technical support and original validation data for this product please contact:  
T: 1 (888) 4PTGLAB (1-888-478-4522) (toll free in USA), or 1(312) 455-8498 (outside USA)  
E: proteintech@ptglab.com  
W: ptglab.com

This product is exclusively available under Proteintech Group brand and is not available to purchase from any other manufacturer.

## Données de validation sélectionnées



Various lysates were subjected to SDS PAGE followed by western blot with 21726-1-AP (SLC15A1 antibody) at dilution of 1:1000 incubated at room temperature for 1.5 hours.



Various lysates were subjected to SDS PAGE followed by western blot with 21726-1-AP (SLC15A1 antibody) at dilution of 1:1000 incubated at room temperature for 1.5 hours.