

À des fins de recherche uniquement

Anticorps Polyclonal de lapin anti-KANK2



Numéro de catalogue: 21733-1-AP

3 Publications

Informations de base

Numéro de catalogue: 21733-1-AP	Numéro d'acquisition GenBank: BC098105	Méthode de purification: Purification par affinité contre l'antigène
Taille: 150ul, Concentration: 500 µg/ml by Nanodrop and 460 µg/ml by Bradford method using BSA as the standard;	Identification du gène (NCBI): 25959	Dilutions recommandées: WB 1:500-1:3000 IHC 1:50-1:500 IF 1:50-1:500
Hôte: Lapin	Nom complet: KN motif and ankyrin repeat domains 2	
Isotype: IgG	MW calculé: 851 aa, 91 kDa	
Immunogen Catalog Number: AG16416	MW observés: 95-100 kDa	

Applications

Applications testées:

IF, IHC, WB, ELISA

Demandes citées:

IF, WB

Spécificité de l'espèce:

Humain, rat, souris

Espèces citées:

Humain, souris

Remarque-IHC: il est suggéré de démasquer l'antigène avec un tampon de TE buffer pH 9,0; (*) A défaut, 'le démasquage de l'antigène peut être effectué avec un tampon citrate pH 6,0.

Contrôles positifs:

WB : tissu cardiaque de souris, cellules HEK-293 transfectées, tissu pulmonaire de souris, tissu rénal de souris

IHC : tissu rénal humain,

IF : cellules HepG2, cellules A549

Informations générales

Involved in transcription regulation by sequestering nuclear receptor coactivators, such as NCOA1, NCOA2 and NCOA3, in the cytoplasm; the function is deregulated by phosphorylation. May be involved in the control of cytoskeleton formation by regulating actin polymerization. Involved in regulation of caspase-independent apoptosis; proposed to sequester AIFM1 in mitochondria and apoptotic stimuli lead to its proteasomal degradation allowing the release of AIFM1 to the nucleus. May be involved in promotion of cell proliferation.

Publications notables

Autrice	Pubmed ID	Journal	Application
Pantipa Tonsawan	31553647	Am J Physiol Cell Physiol	WB
Yuqun Xu	34274317	J Biol Chem	WB
Yasuda Kyota K	24297750	J Cell Biol	WB,IF

Stockage

Stockage:

Stocker à -20°C. Stable pendant un an après l'expédition.

Tampon de stockage:

PBS avec azoture de sodium à 0,02 % et glycérol à 50 % pH 7,3

L'aliquotage n'est pas nécessaire pour le stockage à -20C

*** Les 20ul contiennent 0,1% de BSA.

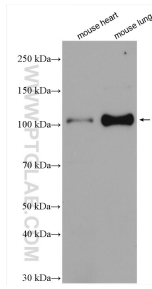
For technical support and original validation data for this product please contact:

T: 1 (888) 4PTGLAB (1-888-478-4522) (toll free in USA), or 1(312) 455-8498 (outside USA)

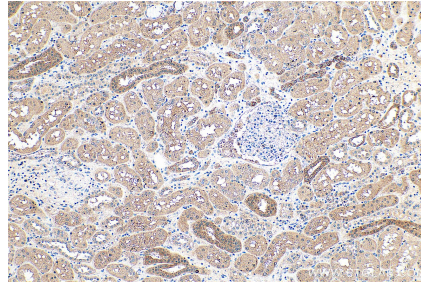
E: proteintech@ptglab.com
W: ptglab.com

This product is exclusively available under Proteintech Group brand and is not available to purchase from any other manufacturer.

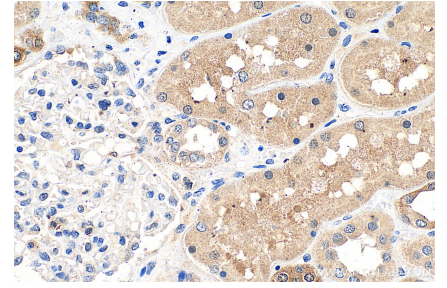
Données de validation sélectionnées



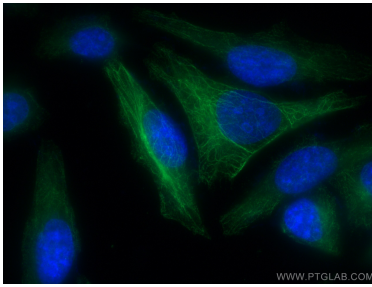
Various lysates were subjected to SDS PAGE followed by western blot with 21733-1-AP (KANK2 antibody) at dilution of 1:1500 incubated at room temperature for 1.5 hours.



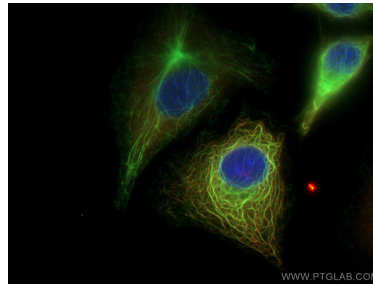
Immunohistochemical analysis of paraffin-embedded human kidney tissue slide using 21733-1-AP (KANK2 antibody) at dilution of 1:200 (under 10x lens). Heat mediated antigen retrieval with Tris-EDTA buffer (pH 9.0).



Immunohistochemical analysis of paraffin-embedded human kidney tissue slide using 21733-1-AP (KANK2 antibody) at dilution of 1:200 (under 40x lens). Heat mediated antigen retrieval with Tris-EDTA buffer (pH 9.0).



Immunofluorescent analysis of (-20°C Methanol) fixed HepG2 cells using KANK2 antibody (21733-1-AP) at dilution of 1:200 and CoraLite@488-Conjugated AffiniPure Goat Anti-Rabbit IgG(H+L).



Immunofluorescent analysis of (-20°C Methanol) fixed A549 cells using KANK2 antibody (21733-1-AP) at dilution of 1:400 and CoraLite@488-Conjugated AffiniPure Goat Anti-Rabbit IgG(H+L), CoraLite@594 B23/NPM1 antibody (CL594-60096, Clone: 4F12A3, red).



Immunofluorescent analysis of (-20°C Methanol) fixed A549 cells using KANK2 antibody (21733-1-AP) at dilution of 1:400 and CoraLite@488-Conjugated AffiniPure Goat Anti-Rabbit IgG(H+L).