

À des fins de recherche uniquement

Anticorps Polyclonal de lapin anti-Integrin Beta 4



Numéro de catalogue: 21738-1-AP

Phare

15 Publications

Informations de base

Numéro de catalogue:

21738-1-AP

Taille:

150ul, Concentration: 400 µg/ml by Nanodrop and 260 µg/ml by Bradford method using BSA as the standard;

Hôte:

Lapin

Isotype:

IgG

Immunogen Catalog Number:

AG16450

Numéro d'acquisition GenBank:

BC126411

Identification du gène (NCBI):

3691

Nom complet:

integrin, beta 4

MW calculé

1752 aa, 195 kDa

MW observés:

200-240 kDa

Méthode de purification:

Purification par affinité contre l'antigène

Dilutions recommandées:

WB 1:500-1:1000

IP 0.5-4.0 ug for IP and 1:500-1:1000 for WB

IHC 1:300-1:1200

Applications

Applications testées:

FC, IHC, IP, WB, ELISA

Demandes citées:

CoIP, IF, IHC, IP, WB

Spécificité de l'espèce:

Humain, rat, souris

Espèces citées:

Humain, rat, souris

Remarque-IHC: il est suggéré de démasquer l'antigène avec un tampon de TE buffer pH 9,0; (*) A défaut, 'le démasquage de l'antigène peut être 'effectué avec un tampon citrate pH 6,0.

Contrôles positifs:

WB : cellules BxPC-3, cellules A431, cellules A549, cellules HeLa, cellules HT-29, cellules MCF-7

IP : cellules HeLa,

IHC : tissu de côlon de souris, tissu de cancer du pancréas humain, tissu de cancer du sein humain, tissu placentaire humain

Informations générales

Integrins are cell adhesion receptors that are heterodimers composed of non-covalently associated alpha and beta subunits. Integrin beta-4 is predominantly expressed in squamous epithelial cells, endothelial cells, immature thymocytes, Schwann cells, and fibroblasts of the peripheral nervous system (PMID: 28084395). Integrin beta-4 pairs with alpha-6, and the heterodimeric integrin alpha-6/beta-4 is a receptor for laminin. Integrin alpha-6/beta-4 plays a critical structural role in the hemidesmosome of epithelial cells, and also plays a role in the invasive and metastatic phenotype of various cancers.

Publications notables

Autrice	Pubmed ID	Journal	Application
Yueqi Li	30378153	J Cell Biochem	WB
Hongfei Liu	36293483	Int J Mol Sci	WB,IF
Junya Ning	36203272	Cell Adh Migr	WB

Stockage

Stockage:

Stocker à -20°C. Stable pendant un an après l'expédition.

Tampon de stockage:

PBS avec azoture de sodium à 0,02 % et glycérol à 50 % pH 7,3

L'aliquotage n'est pas nécessaire pour le stockage à -20C

*** Les 20ul contiennent 0,1% de BSA.

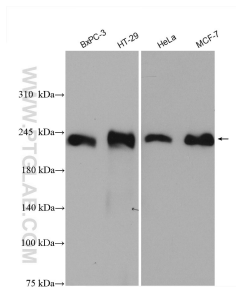
For technical support and original validation data for this product please contact:

T: 1 (888) 4PTGLAB (1-888-478-4522) (toll free in USA), or 1(312) 455-8498 (outside USA)

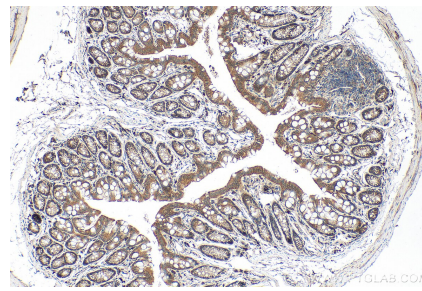
E: proteintech@ptglab.com
W: ptglab.com

This product is exclusively available under Proteintech Group brand and is not available to purchase from any other manufacturer.

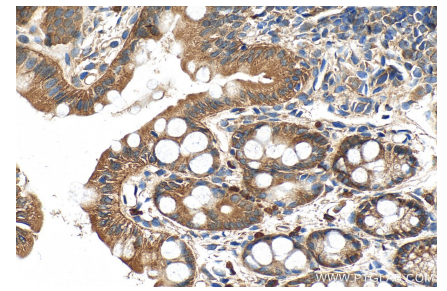
Données de validation sélectionnées



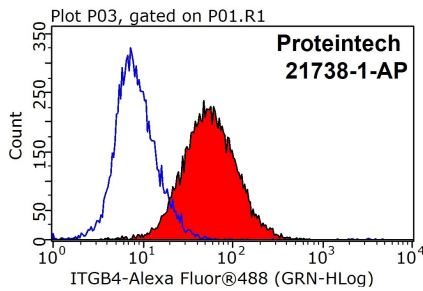
Various lysates were subjected to SDS PAGE followed by western blot with 21738-1-AP (Integrin beta-4 antibody) at dilution of 1:600 incubated at room temperature for 1.5 hours.



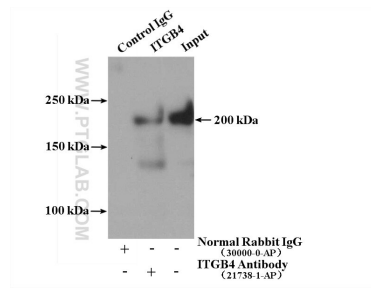
Immunohistochemical analysis of paraffin-embedded mouse colon tissue slide using 21738-1-AP (Integrin Beta 4 antibody) at dilution of 1:600 (under 10x lens). Heat mediated antigen retrieval with Tris-EDTA buffer (pH 9.0).



Immunohistochemical analysis of paraffin-embedded mouse colon tissue slide using 21738-1-AP (Integrin Beta 4 antibody) at dilution of 1:600 (under 40x lens). Heat mediated antigen retrieval with Tris-EDTA buffer (pH 9.0).



1X10⁶ HeLa cells were stained with 0.2ug Integrin beta-4 antibody (21738-1-AP, red) and control antibody (blue). Fixed with 90% MeOH blocked with 3% BSA (30 min). Alexa Fluor 488-conjugated AffiniPure Goat Anti-Rabbit IgG(H+L) with dilution 1:1000.



IP Result of anti-Integrin beta-4 (IP:21738-1-AP, 4ug; Detection:21738-1-AP 1:500) with HeLa cells lysate 2400ug.