

À des fins de recherche uniquement

Anticorps Polyclonal de lapin anti-LCE1B



Numéro de catalogue: 21771-1-AP

Informations de base

Numéro de catalogue: 21771-1-AP	Numéro d'acquisition GenBank: BC104232	Méthode de purification: Purification par affinité contre l'antigène
Taille: 150ul , Concentration: 400 µg/ml by Nanodrop and 240 µg/ml by Bradford method using BSA as the standard;	Identification du gène (NCBI): 353132	Dilutions recommandées: WB 1:500-1:2000 IHC 1:20-1:200 IF 1:20-1:200
Hôte: Lapin	Nom complet: late cornified envelope 1B	
Isotype: IgG	MW calculé: 118 aa, 12 kDa	
Immunogen Catalog Number: AG16442	MW observés: 10-12 kDa	

Applications

Applications testées: IF, IHC, WB, ELISA	Contrôles positifs:
Spécificité de l'espèce: Humain, rat, souris	WB : cellules A375, tissu cutané de rat, tissu cutané de souris
Remarque-IHC: il est suggéré de démasquer l'antigène avec un tampon de TE buffer pH 9,0; (*) À défaut, 'le démasquage de l'antigène peut être effectué avec un tampon citrate pH 6,0.	IHC : tissu cutané humain, tissu œsophagien humain
	IF : cellules A375,

Informations générales

Human LCE1B (Late cornified envelope protein 1B), also named late envelope protein 2 (LEP2), is located at human Chromosome1q21 which contains multiple LCE clusters. LCE1B gene is predicated to encode a 118-aa protein, and is currently evidenced at transcript level. Its expression was skin-specific and was readily detected in adult trunk skin, adult arm skin, fetal skin, penial skin, vulva, esophagus and tongue (PMID: 15854049). LCE genes respond to environmental stimuli such as calcium levels and ultraviolet (UV) light, however, LCE groups have distinct functions (PMID: 15854049).

Stockage

Stockage:
Stocker à -20°C. Stable pendant un an après l'expédition.

Tampon de stockage:
PBS avec azoture de sodium à 0,02 % et glycérol à 50 % pH 7,3
L'aliquotage n'est pas nécessaire pour le stockage à -20C

*** Les 20ul contiennent 0,1% de BSA.

For technical support and original validation data for this product please contact:

T: 1 (888) 4PTGLAB (1-888-478-4522) (toll free in USA), or 1(312) 455-8498 (outside USA)

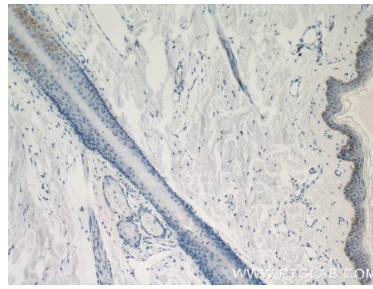
E: proteintech@ptglab.com
W: ptglab.com

This product is exclusively available under Proteintech Group brand and is not available to purchase from any other manufacturer.

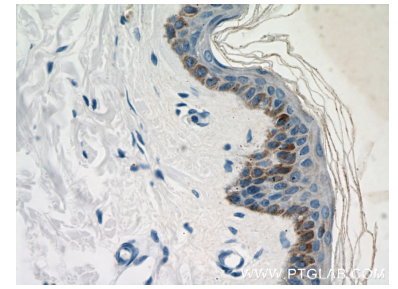
Données de validation sélectionnées



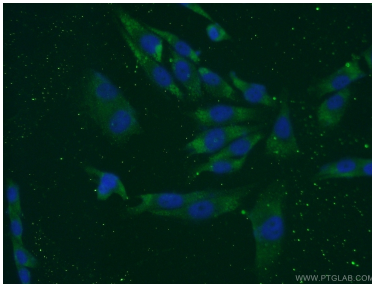
A375 cells were subjected to SDS PAGE followed by western blot with 21771-1-AP (LCE1B antibody) at dilution of 1:1000 incubated at room temperature for 1.5 hours.



Immunohistochemical analysis of paraffin-embedded human skin using 21771-1-AP (LCE1B antibody) at dilution of 1:50 (under 10x lens).



Immunohistochemical analysis of paraffin-embedded human skin using 21771-1-AP (LCE1B antibody) at dilution of 1:50 (under 40x lens).



Immunofluorescent analysis of A375 cells using 21771-1-AP (LCE1B antibody) at dilution of 1:50 and Alexa Fluor 488-conjugated AffiniPure Goat Anti-Rabbit IgG(H+L).