

À des fins de recherche uniquement

Anticorps Polyclonal de lapin anti-IFIH1/MDA5



Numéro de catalogue: 21775-1-AP

Phare

39 Publications

Informations de base

Numéro de catalogue:

21775-1-AP

Taille:

150ul, Concentration: 650 µg/ml by Nanodrop;

Hôte:

Lapin

Isotype:

IgG

Immunogen Catalog Number:

AG16467

Numéro d'acquisition GenBank:

BC111750

Identification du gène (NCBI):

64135

Nom complet:

interferon induced with helicase C domain 1

MW calculé

1025 aa, 117 kDa

MW observés:

117-125 kDa

Méthode de purification:

Purification par affinité contre l'antigène

Dilutions recommandées:

WB 1:500-1:3000

IP 0.5-4.0 µg for IP and 1:200-1:1000 for WB

IHC 1:50-1:500

IF 1:50-1:500

Applications

Applications testées:

IF, IHC, IP, WB, ELISA

Demandes citées:

IF, IHC, IP, RIP, WB

Spécificité de l'espèce:

Humain, souris

Espèces citées:

Humain, porc, singe

Contrôles positifs:

WB : cellules Jurkat,

IP : cellules Jurkat,

IHC : tissu de muscle squelettique humain,

IF : tissu de muscle squelettique de souris,

Remarque-IHC: il est suggéré de démasquer l'antigène avec un tampon de TE buffer pH 9,0; (*) À défaut, le démasquage de l'antigène peut être effectué avec un tampon citrate pH 6,0.

Informations générales

IFIH1 (Interferon-induced helicase C domain-containing protein 1) is a putative RNA helicase that is upregulated in response to treatment with IFN β or IFN γ and MEZ. It is also named as MDA5 and RH116. Ectopic expression of MDA5 in melanoma cells resulted in reduced colony formation, suggesting an interaction of the CARD and apoptotic signal molecules. Functional analysis indicated that MDA5 is an RNA-dependent ATPase. IFIH1 has an apparent molecular mass of 117-130 kDa, and always other bands (70 kDa and 90 kDa) can be detected as cleaved products (PMID: 17267501).

Publications notables

Autrice	Pubmed ID	Journal	Application
Jiangang Zheng	34587973	BMC Vet Res	WB
Matthew Charman	34621686	Front Cell Infect Microbiol	WB
Wei Zhang	25228491	J Gen Virol	WB

Stockage

Stockage:

Stocker à -20°C. Stable pendant un an après l'expédition.

Tampon de stockage:

PBS avec azoture de sodium à 0,02 % et glycérol à 50 % pH 7,3

L'aliquotage n'est pas nécessaire pour le stockage à -20C

*** Les 20ul contiennent 0,1% de BSA.

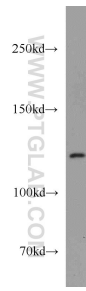
For technical support and original validation data for this product please contact:

T: 1 (888) 4PTGLAB (1-888-478-4522) (toll free in USA), or 1(312) 455-8498 (outside USA)

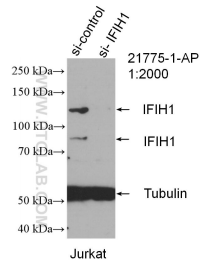
E: proteintech@ptglab.com
W: ptglab.com

This product is exclusively available under Proteintech Group brand and is not available to purchase from any other manufacturer.

Données de validation sélectionnées



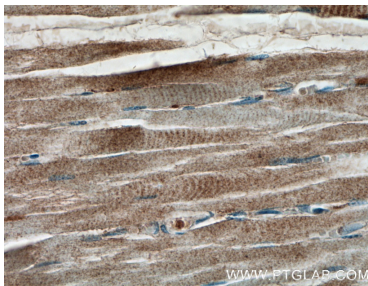
Jurkat cells were subjected to SDS PAGE followed by western blot with 21775-1-AP (IFIH1 antibody) at dilution of 1:1500 incubated at room temperature for 1.5 hours.



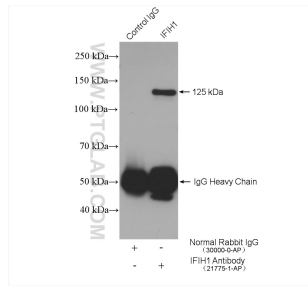
WB result of IFIH1 antibody (21775-1-AP; 1:2000; incubated at room temperature for 1.5 hours) with sh-Control and sh-IFIH1 transfected Jurkat cells.



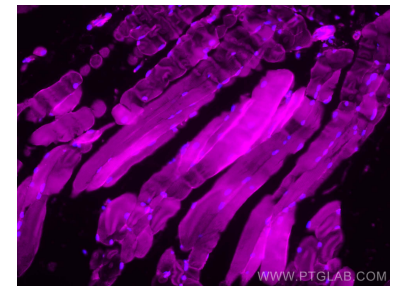
Immunohistochemical analysis of paraffin-embedded human skeletal muscle tissue slide using 21775-1-AP (IFIH1 antibody) at dilution of 1:200 (under 10x lens).



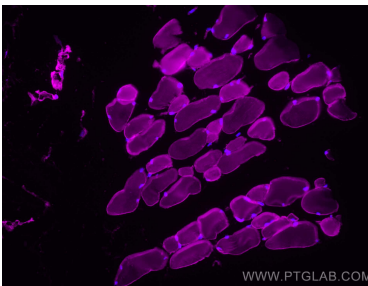
Immunohistochemical analysis of paraffin-embedded human skeletal muscle tissue slide using 21775-1-AP (IFIH1 antibody) at dilution of 1:200 (under 40x lens).



IP result of anti-IFIH1 (IP:21775-1-AP, 4ug; Detection:21775-1-AP 1:300) with Jurkat cells lysate 4000 ug.



Immunofluorescent analysis of (4% PFA) fixed mouse skeletal muscle tissue using IFIH1/MDA5 antibody (21775-1-AP) at dilution of 1:200 and CoraLite®647-conjugated AffiniPure F(ab).



Immunofluorescent analysis of (4% PFA) fixed mouse skeletal muscle tissue using IFIH1/MDA5 antibody (21775-1-AP) at dilution of 1:200 and CoraLite®647-conjugated AffiniPure F(ab).