

À des fins de recherche uniquement

Anticorps Polyclonal de lapin anti-LDHA



Numéro de catalogue: 21799-1-AP

30 Publications

Informations de base

Numéro de catalogue:
21799-1-AP

Taille:
150ul , Concentration: 500 µg/ml by Nanodrop and 387 µg/ml by Bradford method using BSA as the standard;

Hôte:
Lapin

Isotype:
IgG

Immunogen Catalog Number:
AG16703

Numéro d'acquisition GenBank:
BC067223

Identification du gène (NCBI):
3939

Nom complet:
lactate dehydrogenase A

MW calculé
332 aa, 37 kDa

MW observés:
32-37 kDa

Méthode de purification:
Purification par affinité contre l'antigène

Dilutions recommandées:
WB 1:5000-1:30000
IP 0.5-4.0 ug for IP and 1:500-1:1000 for WB
IHC 1:20-1:200
IF 1:50-1:500

Applications

Applications testées:
IF, IHC, IP, WB, ELISA

Demandes citées:
IF, IHC, IP, WB

Spécificité de l'espèce:
Humain, rat, souris

Espèces citées:
Humain, rat, souris

Remarque-IHC: il est suggéré de démasquer l'antigène avec un tampon de TE buffer pH 9.0; (*) A défaut, 'le démasquage de l'antigène peut être 'effectué avec un tampon citrate pH 6,0.

Contrôles positifs:

WB : cellules HEK-293, cellules A375, cellules HepG2, cellules MCF-7, cellules NIH/3T3, tissu testiculaire humain

IP : cellules HEK-293,

IHC : tissu de muscle squelettique humain,

IF : cellules HepG2,

Informations générales

Lactate dehydrogenase (LDH) is composed of A subunits predominate in skeletal muscle and B subunits are abundantly produced in brain and heart. The LDHA (lactate dehydrogenase A) and COPB1 (coatomer protein complex, subunit beta 1) genes, are involved in energy metabolism and protein transport processes. Both genes might play important roles in muscle development. It has some isoforms with the molecular mass of 27-40 kDa and can form a homotetramer (PMID:11276087).

Publications notables

Autrice	Pubmed ID	Journal	Application
Xiaodong Zhang	30180863	J Exp Clin Cancer Res	WB
Zhen Tan	36269388	J Cancer Res Clin Oncol	IHC, WB
Tiantian Cai	31648165	Biomed Pharmacother	WB, IHC

Stockage

Stockage:

Stocker à -20°C. Stable pendant un an après l'expédition.

Tampon de stockage:

PBS avec azoture de sodium à 0,02 % et glycérol à 50 % pH 7,3

L'aliquotage n'est pas nécessaire pour le stockage à -20C

*** Les 20ul contiennent 0,1% de BSA.

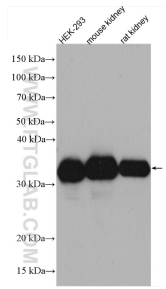
For technical support and original validation data for this product please contact:

T: 1 (888) 4PTGLAB (1-888-478-4522) (toll free in USA), or 1(312) 455-8498 (outside USA)

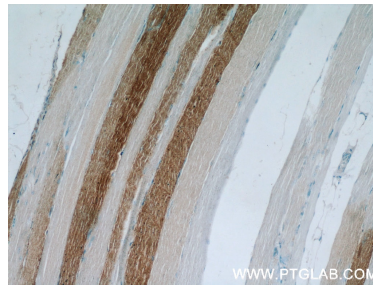
E: proteintech@ptglab.com
W: ptglab.com

This product is exclusively available under Proteintech Group brand and is not available to purchase from any other manufacturer.

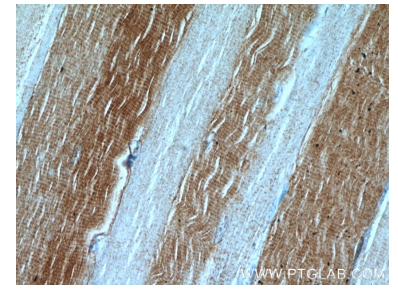
Données de validation sélectionnées



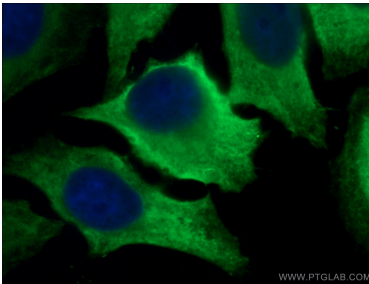
Various lysates were subjected to SDS PAGE followed by western blot with 21799-1-AP (LDHA antibody) at dilution of 1:10000 incubated at room temperature for 1.5 hours.



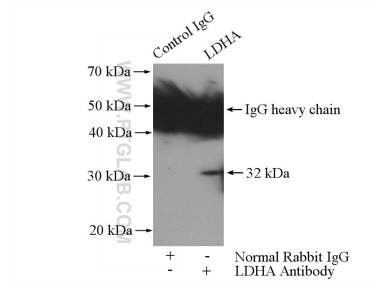
Immunohistochemical analysis of paraffin-embedded human skeletal muscle using 21799-1-AP (LDHA antibody) at dilution of 1:50 (under 10x lens).



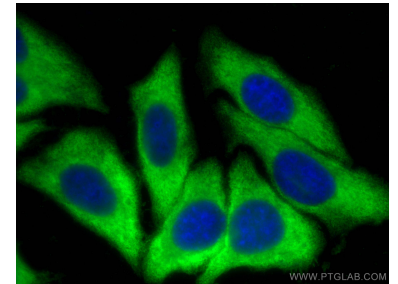
Immunohistochemical analysis of paraffin-embedded human skeletal muscle using 21799-1-AP (LDHA antibody) at dilution of 1:50 (under 40x lens).



Immunofluorescent analysis of (-20°C Ethanol) fixed HepG2 cells using 21799-1-AP (LDHA antibody) at dilution of 1:50 and Alexa Fluor 488-Conjugated AffiniPure Goat Anti-Rabbit IgG(H+L).



IP Result of anti-LDHA (IP:21799-1-AP, 4ug; Detection:21799-1-AP 1:500) with HEK-293 cells lysate 2000ug.



Immunofluorescent analysis of (-20°C Methanol) fixed HepG2 cells using LDHA antibody (21799-1-AP) at dilution of 1:200 and CoraLite®488-Conjugated AffiniPure Goat Anti-Rabbit IgG(H+L).