

À des fins de recherche uniquement

Anticorps Polyclonal de lapin anti-EZH2



Numéro de catalogue: 21800-1-AP

Phare

71 Publications

Informations de base

Numéro de catalogue:

21800-1-AP

Taille:

150ul, Concentration: 800 µg/ml by Nanodrop and 367 µg/ml by Bradford method using BSA as the standard;

Hôte:

Lapin

Isotype:

IgG

Immunogen Catalog Number:

AG16789

Numéro d'acquisition GenBank:

BC010858

Identification du gène (NCBI):

2146

Nom complet:

enhancer of zeste homolog 2 (Drosophila)

MW calculé

751 aa, 86 kDa

MW observés:

90-102 kDa

Méthode de purification:

Purification par affinité contre l'antigène

Dilutions recommandées:

IP 0.5-4.0 ug for IP and 1:500-1:2000 for WB

IF 1:20-1:200

Applications

Applications testées:

FC, IF, IP, ELISA

Demandes citées:

CHIP, CoIP, IF, IP, RIP, WB

Spécificité de l'espèce:

Humain, rat, souris

Espèces citées:

Humain, porc, rat, souris

Contrôles positifs:

IP : cellules HepG2,

IF : cellules HepG2,

Informations générales

EZH2 (enhancer of zeste homologue 2, also known as KMT6) is a member of Polycomb group (PcG) family and encodes a histone methyl transferase that has an essential role in promoting histone H3 lysine 27 trimethylation (H3K27me3) and epigenetic gene silencing. EZH2 is important for cell proliferation and inhibition of cell differentiation, and is implicated in cancer progression. Overexpression of EZH2 is a marker of advanced and metastatic disease in many solid tumors, including prostate and breast cancer. This antibody detected EZH2 protein as a single band with a molecular weight (MW) of 91-100 kDa in multiple cell lines. The phosphorylation may result in the higher molecular weight (calculated MW as 80-86 kDa). (20935635, 21367748)

Publications notables

Autrice	Pubmed ID	Journal	Application
Min Li	28970250	FASEB J	WB
Yan Sun	34564701	Cell Death Dis	WB
Qun Liu	36151333	Cancer Gene Ther	WB

Stockage

Stockage:

Stocker à -20°C. Stable pendant un an après l'expédition.

Tampon de stockage:

PBS avec azoture de sodium à 0,02 % et glycérol à 50 % pH 7,3

L'aliquotage n'est pas nécessaire pour le stockage à -20C

*** Les 20ul contiennent 0,1% de BSA.

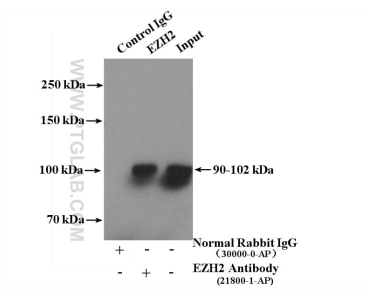
For technical support and original validation data for this product please contact:

T: 1 (888) 4PTGLAB (1-888-478-4522) (toll free in USA), or 1(312) 455-8498 (outside USA)

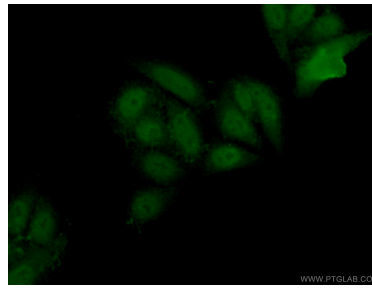
E: proteintech@ptglab.com
W: ptglab.com

This product is exclusively available under Proteintech Group brand and is not available to purchase from any other manufacturer.

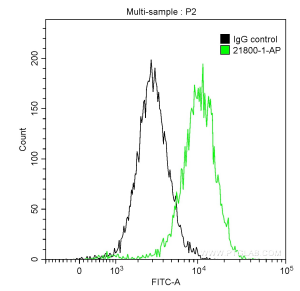
Données de validation sélectionnées



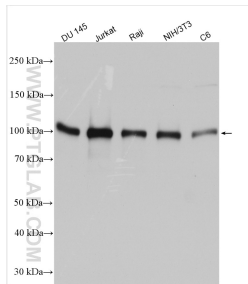
IP Result of anti-EZH2 (IP:21800-1-AP, 4ug; Detection:21800-1-AP 1:1000) with HepG2 cells lysate 3400ug.



Immunofluorescent analysis of (10% Formaldehyde) fixed HepG2 cells using 21800-1-AP (EZH2 antibody) at dilution of 1:50 and Alexa Fluor 488-conjugated AffiniPure Goat Anti-Rabbit IgG(H+L).



1X10⁶ HepG2 cells were intracellularly stained with 0.2 ug Anti-Human EZH2 (21800-1-AP) and CoraLite@488-Conjugated AffiniPure Goat Anti-Rabbit IgG(H+L) at dilution 1:1000 (green), and 0.2 ug Control Antibody. Cells were fixed with 4% PFA and permeabilized with 0.1% TritonX-100.



Various lysates were subjected to SDS PAGE followed by western blot with 21800-1-AP (EZH2 antibody) at dilution of 1:10000 incubated at room temperature for 1.5 hours.