

À des fins de recherche uniquement

Anticorps Polyclonal de lapin anti-ROCK1



Numéro de catalogue: 21850-1-AP

Phare

72 Publications

Informations de base

Numéro de catalogue: 21850-1-AP	Numéro d'acquisition GenBank: BC113114	Méthode de purification: Purification par affinité contre l'antigène
Taille: 150ul, Concentration: 600 µg/ml by Nanodrop;	Identification du gène (NCBI): 6093	Dilutions recommandées: WB 1:5000-1:50000 IHC 1:50-1:500 IF 1:50-1:500
Hôte: Lapin	Nom complet: Rho-associated, coiled-coil containing protein kinase 1	
Isotype: IgG	MW calculé: 1354 aa, 158 kDa	
Immunogen Catalog Number: AG16317	MW observés: 150-160 kDa	

Applications

Applications testées:

IF, IHC, WB, ELISA

Demandes citées:

IF, IHC, WB

Spécificité de l'espèce:

Humain, rat, souris

Espèces citées:

Humain, rat, souris

Contrôles positifs:

WB : cellules A431, cellules C6, cellules HEK-293T, cellules HeLa, cellules Jurkat, cellules NIH/3T3, cellules Ramos

IHC : tissu de lymphome humain,

IF : cellules HeLa,

Remarque-IHC: il est suggéré de démasquer l'antigène avec un tampon de TE buffer pH 9,0; (*) À défaut, le démasquage de l'antigène peut être effectué avec un tampon citrate pH 6,0.

Informations générales

ROCK1, also named as p160ROCK and NY-REN-35, belongs to the protein kinase superfamily and AGC Ser/Thr protein kinase family. ROCK1 phosphorylates and activates DAPK3, which then regulates myosin light chain phosphatase through phosphorylation of MYPT1 thereby regulating the assembly of the actin cytoskeleton, cell migration, invasiveness of tumor cells, smooth muscle contraction and neurite outgrowth. ROCK1 is required for centromere positioning and centromere-dependent exit from mitosis. It is necessary for apoptotic membrane blebbing. ROCK1 catalyzes the reaction: ATP + a protein = ADP + a phosphoprotein.

Publications notables

Autrice	Pubmed ID	Journal	Application
Lichan Mao	36247873	Anal Cell Pathol (Amst)	WB
Xin Chen	32996285	J Cell Mol Med	WB
Kai Cui	27678468	Asian J Androl	WB,IHC

Stockage

Stockage:

Stocker à -20°C. Stable pendant un an après l'expédition.

Tampon de stockage:

PBS avec azoture de sodium à 0,02 % et glycérol à 50 % pH 7,3

L'aliquotage n'est pas nécessaire pour le stockage à -20C

*** Les 20ul contiennent 0,1% de BSA.

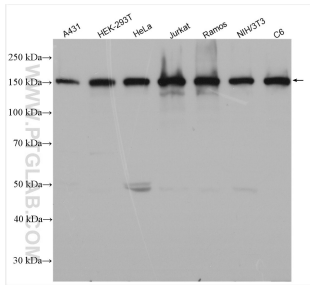
For technical support and original validation data for this product please contact:

T: 1 (888) 4PTGLAB (1-888-478-4522) (toll free in USA), or 1(312) 455-8498 (outside USA)

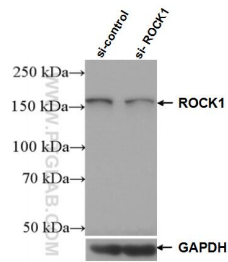
E: proteintech@ptglab.com
W: ptglab.com

This product is exclusively available under Proteintech Group brand and is not available to purchase from any other manufacturer.

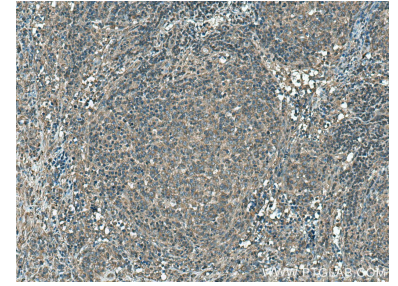
Données de validation sélectionnées



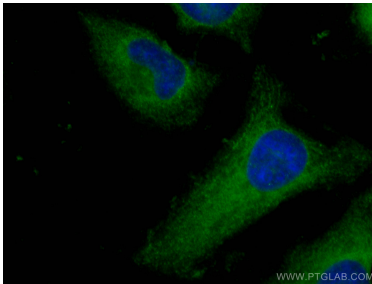
Various lysates were subjected to SDS PAGE followed by western blot with 21850-1-AP (ROCK1 antibody) at dilution of 1:10000 incubated at room temperature for 1.5 hours.



WB result of ROCK1 antibody (21850-1-AP; 1:5000; incubated at room temperature for 1.5 hours) with sh-Control and sh-ROCK1 transfected HeLa cells.



Immunohistochemical analysis of paraffin-embedded human lymphoma tissue slide using 21850-1-AP (ROCK1 antibody) at dilution of 1:200 (under 10x lens). Heat mediated antigen retrieval with Tris-EDTA buffer (pH 9.0).



Immunofluorescent analysis of (-20°C Ethanol) fixed HeLa cells using ROCK1 antibody (21850-1-AP) at dilution of 1:200 and CoraLite®488-Conjugated AffiniPure Goat Anti-Rabbit IgG(H+L).