

À des fins de recherche uniquement

Anticorps Polyclonal de lapin anti-NR3C2



Numéro de catalogue: 21854-1-AP

Phare

18 Publications

Informations de base

Numéro de catalogue:

21854-1-AP

Taille:

150ul, Concentration: 1000 µg/ml by Nanodrop and 533 µg/ml by Bradford method using BSA as the standard;

Hôte:

Lapin

Isotype:

IgG

Immunogen Catalog Number:

AG16410

Numéro d'acquisition GenBank:

BC111758

Identification du gène (NCBI):

4306

Nom complet:

nuclear receptor subfamily 3, group C, member 2

MW calculé

984 aa, 107 kDa

MW observés:

94-110 kDa

Méthode de purification:

Purification par affinité contre l'antigène

Dilutions recommandées:

WB 1:1000-1:8000

IP 0.5-4.0 ug for IP and 1:500-1:1000 for WB

IHC 1:50-1:500

IF 1:50-1:500

Applications

Applications testées:

IF, IHC, IP, WB, ELISA

Demandes citées:

ChIP, IF, IHC, WB

Spécificité de l'espèce:

Humain, souris

Espèces citées:

Humain, rat, souris

Remarque-IHC: il est suggéré de démasquer l'antigène avec un tampon de TE buffer pH 9,0; (*) A défaut, 'le démasquage de l'antigène peut être effectué avec un tampon citrate pH 6,0.

Contrôles positifs:

WB : tissu rénal de souris, cellules HEK-293, cellules HeLa

IP : cellules HEK-293,

IHC : tissu rénal humain, tissu de côlon humain

IF : cellules HepG2, cellules HEK-293

Informations générales

Nuclear receptor subfamily 3 group C member 2 (NR3C2), also known as Mineralocorticoid receptor (MCR or MR), is a member of the steroid/thyroid /retinoic nuclear hormone receptor superfamily that has been shown to activate gene transcription in response to aldosterone binding. Regulation of the mineralocorticoid receptors occurs through either receptor down-regulation (negative autoregulation) or hormone-mediated upregulation (positive autoregulation). MCR association with HSP 90 appears to be required for hormone binding to MCR and subsequent MCR activation.

Publications notables

Autrice	Pubmed ID	Journal	Application
Yi Chang	36185701	J Renin Angiotensin Aldosterone Syst	IHC, WB
Panpan Qiang	36148244	Front Immunol	WB
Yukang Yuan	34779558	EMBO Rep	WB

Stockage

Stockage:

Stocker à -20°C. Stable pendant un an après l'expédition.

Tampon de stockage:

PBS avec azoture de sodium à 0,02 % et glycérol à 50 % pH 7,3

L'aliquotage n'est pas nécessaire pour le stockage à -20C

*** Les 20ul contiennent 0,1% de BSA.

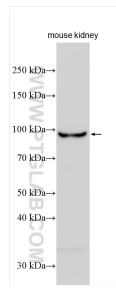
For technical support and original validation data for this product please contact:

T: 1 (888) 4PTGLAB (1-888-478-4522) (toll free in USA), or 1(312) 455-8498 (outside USA)

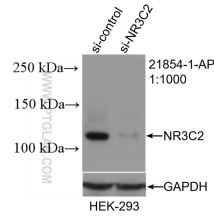
E: proteintech@ptglab.com
W: ptglab.com

This product is exclusively available under Proteintech Group brand and is not available to purchase from any other manufacturer.

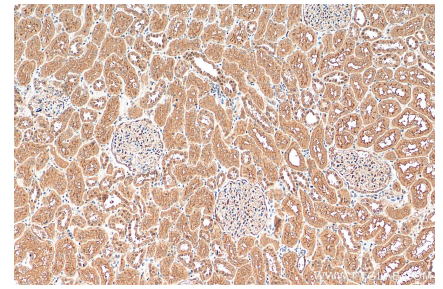
Données de validation sélectionnées



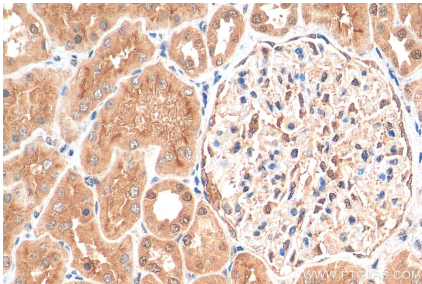
mouse kidney tissue were subjected to SDS PAGE followed by western blot with 21854-1-AP (NR3C2 antibody) at dilution of 1:4000 incubated at room temperature for 1.5 hours.



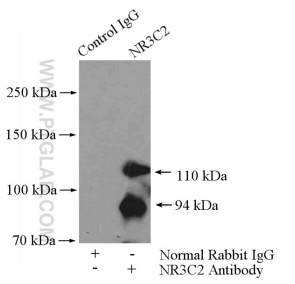
WB result of NR3C2 antibody (21854-1-AP; 1:1000; incubated at room temperature for 1.5 hours) with sh-Control and sh-NR3C2 transfected HEK-293 cells.



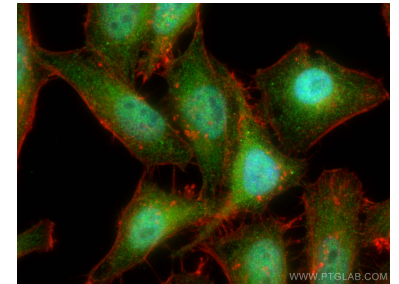
Immunohistochemical analysis of paraffin-embedded human kidney tissue slide using 21854-1-AP (NR3C2 antibody) at dilution of 1:200 (under 10x lens). Heat mediated antigen retrieval with Tris-EDTA buffer (pH 9.0).



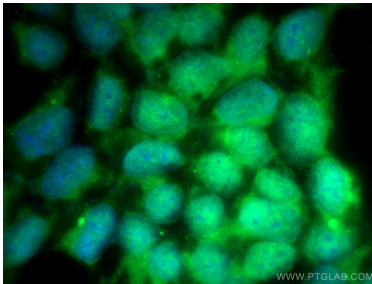
Immunohistochemical analysis of paraffin-embedded human kidney tissue slide using 21854-1-AP (NR3C2 antibody) at dilution of 1:200 (under 40x lens). Heat mediated antigen retrieval with Tris-EDTA buffer (pH 9.0).



IP Result of anti-NR3C2 (IP:21854-1-AP, 4ug; Detection:21854-1-AP 1:500) with HEK-293 cells lysate 3200ug.



Immunofluorescent analysis of (4% PFA) fixed HepG2 cells using NR3C2 antibody (21854-1-AP) at dilution of 1:200 and CoraLite@488-Conjugated AffiniPure Goat Anti-Rabbit IgG(H+L), CL594-Phalloidin (red).



Immunofluorescent analysis of (-20°C Methanol) fixed HEK-293 cells using NR3C2 antibody (21854-1-AP) at dilution of 1:400 and CoraLite@488-Conjugated AffiniPure Goat Anti-Rabbit IgG(H+L).