

À des fins de recherche uniquement

Anticorps Polyclonal de lapin anti-IL-6



Numéro de catalogue: 21865-1-AP

Phare

488 Publications

Informations de base

Numéro de catalogue: 21865-1-AP	Numéro d'acquisition GenBank: BC015511	Méthode de purification: Purification par affinité contre l'antigène
Taille: 150ul , Concentration: 500 µg/ml by Nanodrop;	Identification du gène (NCBI): 3569	Dilutions recommandées: WB 1:500-1:2000
Hôte: Lapin	Nom complet: interleukin 6 (interferon, beta 2)	
Isotype: IgG	MW calculé: 212 aa, 24 kDa	
Immunogen Catalog Number: AG10565	MW observés: 20 kDa	

Applications

Applications testées: FC, WB, ELISA	Contrôles positifs: WB : cellules HUVEC traitées au LPS et à l'inhibiteur de transport de protéines,
Demandes citées: Cell treatment, ELISA, IF, IHC, Neutralization	
Spécificité de l'espèce: Humain	
Espèces citées: canin, Chèvre, Humain, porc	

Informations générales

Interleukin-6 (IL-6) is an interleukin that acts as both a pro-inflammatory and anti-inflammatory cytokine. IL-6 protein is secreted by a variety of cell types including T cells and macrophages as phosphorylated and variably glycosylated molecule. IL-6 plays an essential role in the final differentiation of B-cells into Ig-secreting cells involved in lymphocyte and monocyte differentiation. It induces myeloma and plasmacytoma growth and induces nerve cells differentiation acts on B-cells, T-cells, hepatocytes, hematopoietic progenitor cells and cells of the CNS. IL-6 is also considered a myokine, a cytokine produced from muscle, and is elevated in response to muscle contraction. IL-6 has been shown to interact with interleukin-6 receptor and glycoprotein 130. Additionally, IL-6 is involved in hematopoiesis, bone metabolism, and cancer progression, and has been defined an essential role in directing transition from innate to acquired immunity.

Publications notables

Autrice	Pubmed ID	Journal	Application
Yanliang Wu	34601083	J Ethnopharmacol	WB
Qian Chen	32997272	J Nat Med	WB
Donghui Yang	32996162	J Cell Physiol	WB

Stockage

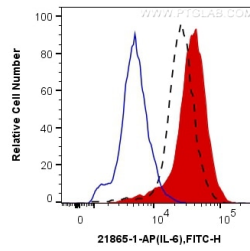
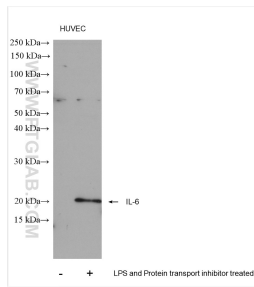
Stockage:
Stocker à -20°C. Stable pendant un an après l'expédition.
Tampon de stockage:
PBS avec azoture de sodium à 0,02 % et glycérol à 50 % pH 7,3
L'aliquotage n'est pas nécessaire pour le stockage à -20C

*** Les 20ul contiennent 0,1% de BSA.

For technical support and original validation data for this product please contact:
T: 1 (888) 4PTGLAB (1-888-478-4522) (toll free in USA), or 1(312) 455-8498 (outside USA)
E: proteintech@ptglab.com
W: ptglab.com

This product is exclusively available under Proteintech Group brand and is not available to purchase from any other manufacturer.

Données de validation sélectionnées



Untreated HUVEC cells, HUVEC cells (treated with 0.5 $\mu\text{g/ml}$ LPS for 24 hours, then add 300 ng/ml protein transport inhibitor last 20 hours) were subjected to SDS PAGE followed by western blot with 21865-1-AP (IL-6 antibody) at dilution of 1:1000 incubated at room temperature for 1.5 hours.

1×10^6 HUVEC cells untreated (dashed lines), LPS and Brefeldin A treated (red) were intracellularly stained with 0.5 μg Anti-Human IL-6 (21865-1-AP) and CoraLite[®]488-Conjugated AffiniPure Goat Anti-Rabbit IgG(H+L) at dilution 1:1000, or 0.5 μg Control Antibody (blue). Cells were fixed with 4% PFA and permeabilized with Intracellular Staining Permeabilization Wash Buffer.